

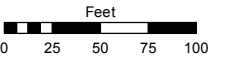
(#3812)
MANZANITA WEST UNIT 9
 A PORTION OF SECTION 34, T19N - R19E

Assessor's Map Number

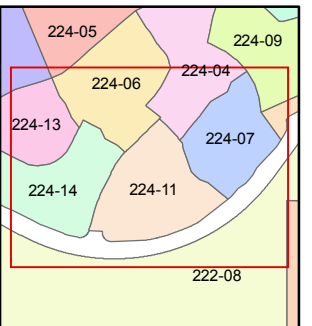
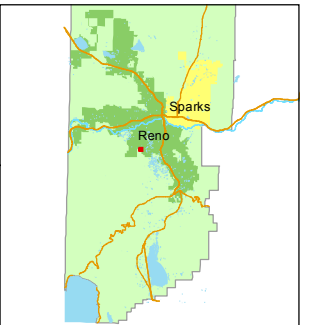
224-11

STATE OF NEVADA
WASHOE COUNTY
ASSESSOR'S OFFICE
 Joshua G. Wilson, Assessor

1001 East Ninth Street
 Building D
 Reno, Nevada 89512
 (775) 328-2231



1 inch = 100 feet



created by: KSB 7/12/2012

last updated: _____

area previously shown on map(s)

023-26

NOTE: This map was prepared for the use of the Washoe County Assessor for assessment and illustrative purposes only. It does not represent a survey of the premises. No liability is assumed as to the sufficiency or accuracy of the data delineated hereon.

GPS "CHALK BLUFF"
 N=14,863,132.557
 E= 2,260,505.389

