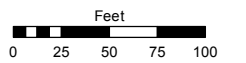


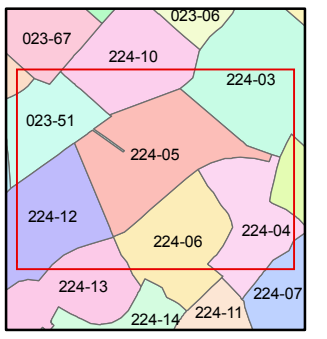
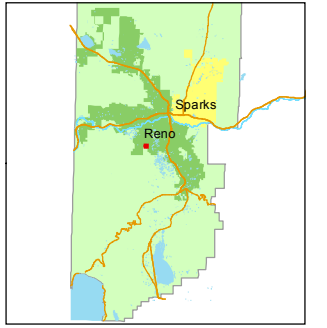
(#3489)
MANZANITA WEST UNIT 7
 A PORTION OF SECTIONS 27 & 34
 T19N - R19E

Assessor's Map Number
224-05

STATE OF NEVADA
WASHOE COUNTY
 ASSESSOR'S OFFICE
 Joshua G. Wilson, Assessor
 1001 East Ninth Street
 Building D
 Reno, Nevada 89512
 (775) 328-2231

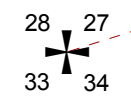
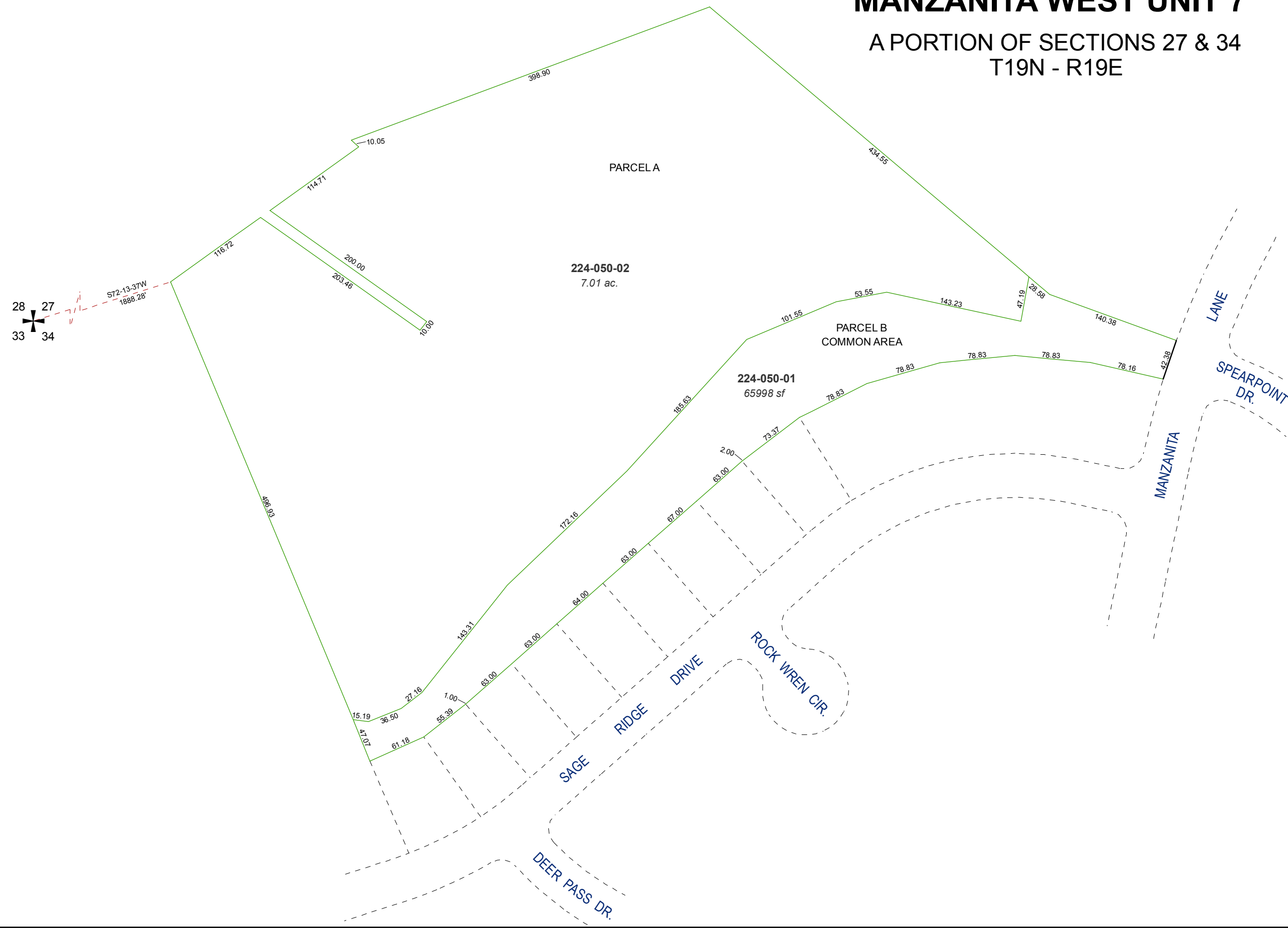


1 inch = 100 feet



created by: KSB 7/11/2012
 last updated: _____
 area previously shown on map(s)
023-26

NOTE: This map was prepared for the use of the Washoe County Assessor for assessment and illustrative purposes only. It does not represent a survey of the premises. No liability is assumed as to the sufficiency or accuracy of the data delineated hereon.



ST2-13-37W
 1888.28'