

222-16

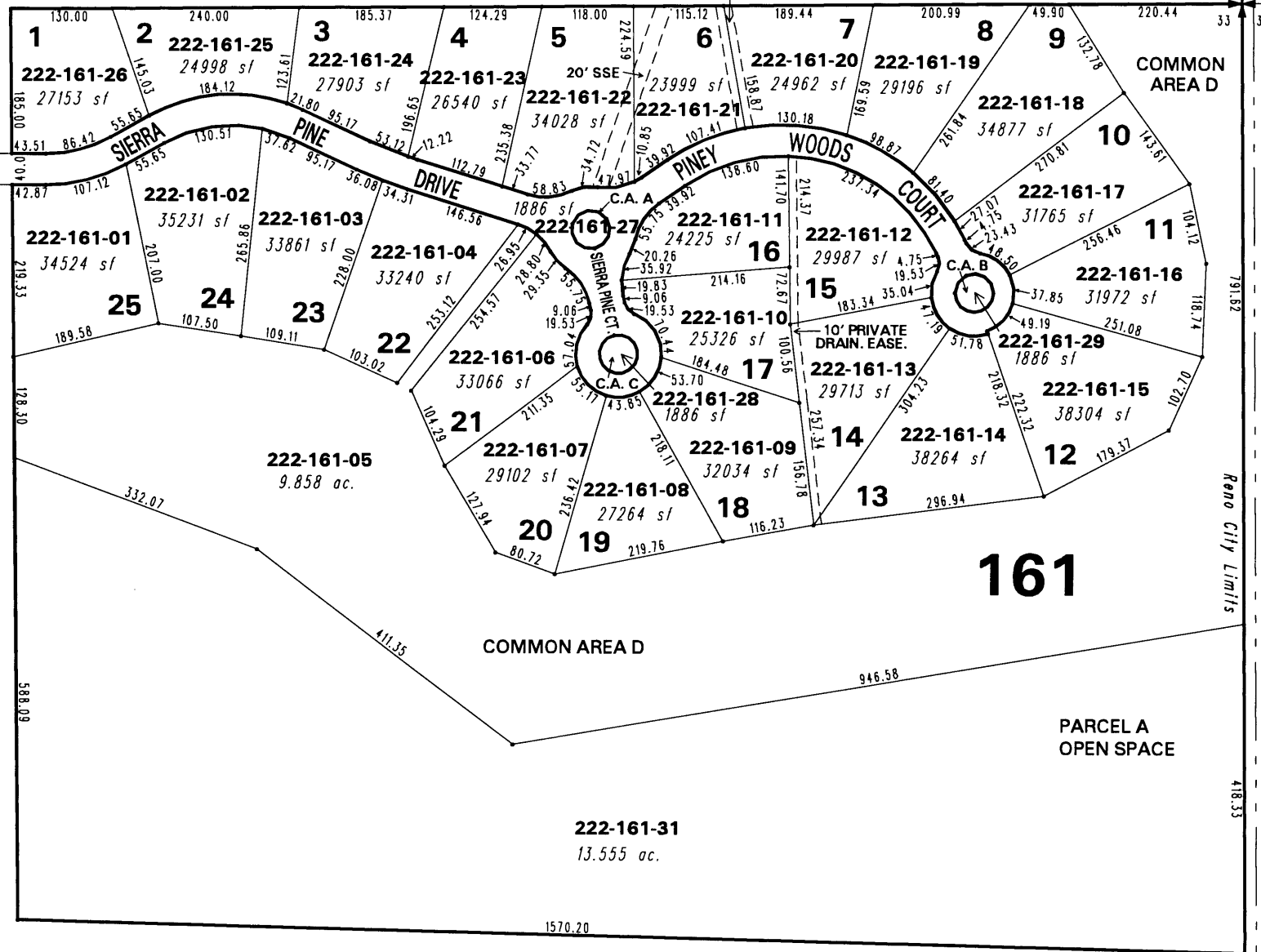
(#4130)
WHISPERING PINES SUBDIVISION
A PLANNED UNIT DEVELOPMENT AT THE CAUGHLIN RANCH
PORTION OF NE 1/4 OF SECTION 33, T19N - R19E

BOOK 218

MCCARRAN

BLVD.

20' EMERGENCY ACCESS EASE.



222-17

BOOK 41

222-08

161

BOOK 41



1" = 200'



C.A. = COMMON AREA

NOTE: This map is prepared for the use of the Washoe County Assessor for assessment and illustrative purposes only. It does not represent a survey of the premises. No liability is assumed as to the sufficiency or the accuracy of the data delineated hereon.

Office of Washoe County Assessor, Nevada - Robert W. McGowan

This area previously shown on 41-23

NOTE: Areas of parcels which are less than 2 acres are shown in square feet.

Drawn by	KSB	11/19/02
Revised	KSB	8/12/03 KSB 10/22/03