

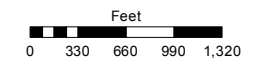
PORTION OF SECTION 34  
T19N - R19E  
PORTIONS OF SECTIONS  
2, 3, 4, 10 & 11  
T18N - R19E

Parcels 1, 2 & 3 of RS 5018 are per  
a Judicial Order, Doc. #3604838

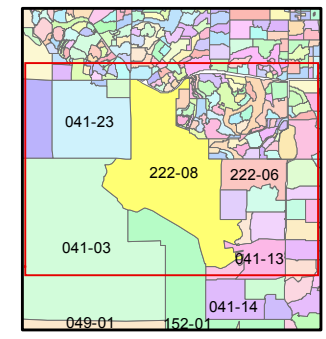
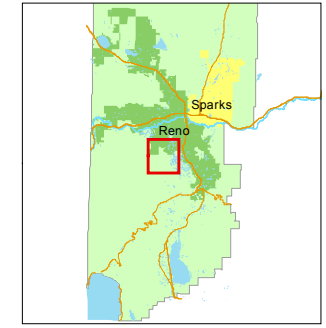
Assessor's Map Number  
**222-08**

STATE OF NEVADA  
**WASHOE COUNTY**  
ASSESSOR'S OFFICE  
Joshua G. Wilson, Assessor

1001 East Ninth Street  
Building D  
Reno, Nevada 89512  
(775) 328-2231



1 inch = 1,320 feet



created by: KSB 5/10/2012

last updated: \_\_\_\_\_

area previously shown on map(s)  
041-04

NOTE: This map was prepared for the use of the Washoe County Assessor for assessment and illustrative purposes only. It does not represent a survey of the premises. No liability is assumed as to the sufficiency or accuracy of the data delineated hereon.