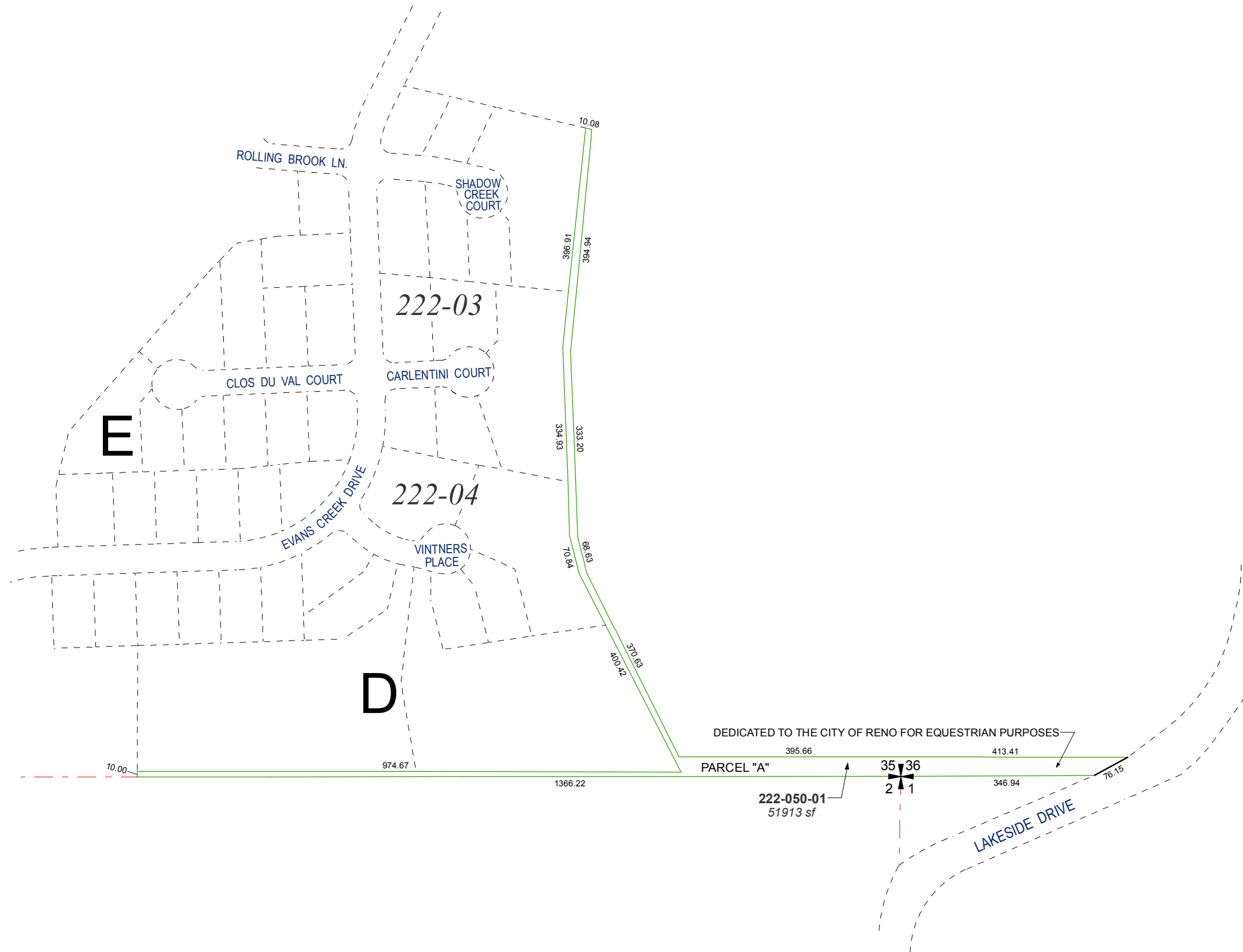


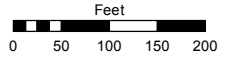
**(#3417)
AMENDED
EVANS CREEK ESTATES - UNIT 4
PORTION S½ SECTION 35, T19N - R19E**



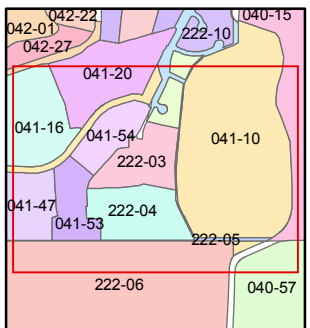
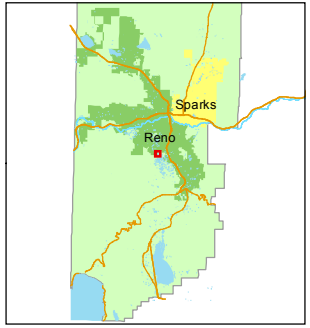
Assessor's Map Number
222-05

STATE OF NEVADA
WASHOE COUNTY
ASSESSOR'S OFFICE
Joshua G. Wilson, Assessor

1001 East Ninth Street
Building D
Reno, Nevada 89512
(775) 328-2231



1 inch = 200 feet



created by: KSB 11/14/11
last updated: _____
area previously shown on map(s)
041-10

NOTE: This map was prepared for the use of the Washoe County Assessor for assessment and illustrative purposes only. It does not represent a survey of the premises. No liability is assumed as to the sufficiency or accuracy of the data delineated hereon.