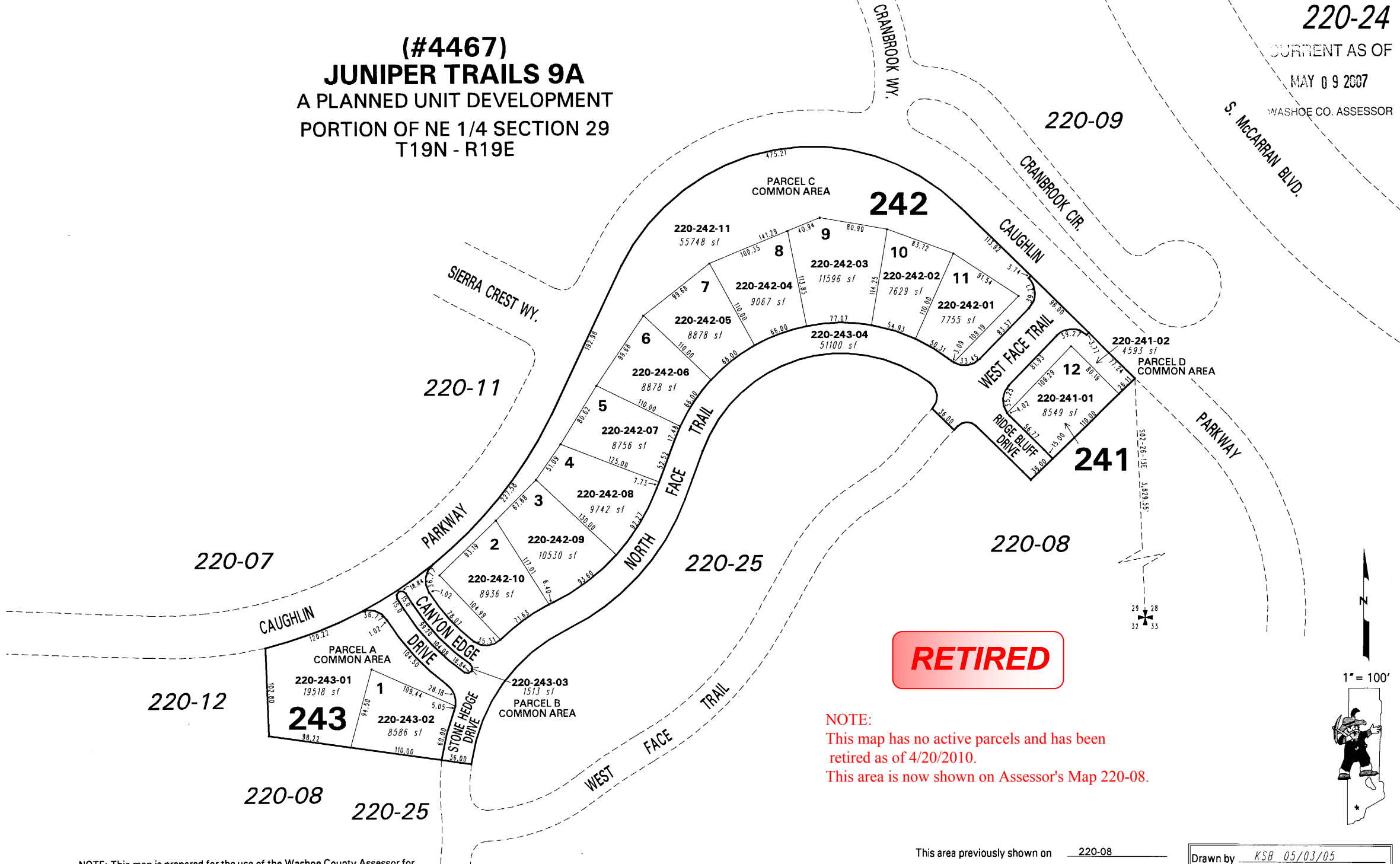


(#4467)
JUNIPER TRAILS 9A
 A PLANNED UNIT DEVELOPMENT
 PORTION OF NE 1/4 SECTION 29
 T19N - R19E

220-24
 CURRENT AS OF
 MAY 09 2007
 WASHOE CO. ASSESSOR



RETIRED

NOTE:
 This map has no active parcels and has been
 retired as of 4/20/2010.
 This area is now shown on Assessor's Map 220-08.

NOTE: This map is prepared for the use of the Washoe County Assessor for assessment and illustrative purposes only. It does not represent a survey of the premises. No liability is assumed as to the sufficiency or the accuracy of the data delineated hereon.

Office of Washoe County Assessor, Nevada - Joshua G. Wilson

This area previously shown on 220-08

NOTE: Areas of parcels which are less than 2 acres are shown in square feet.

Drawn by <u>KSB 05/03/05</u> Revised <u>KSB 4/26/07</u>
--