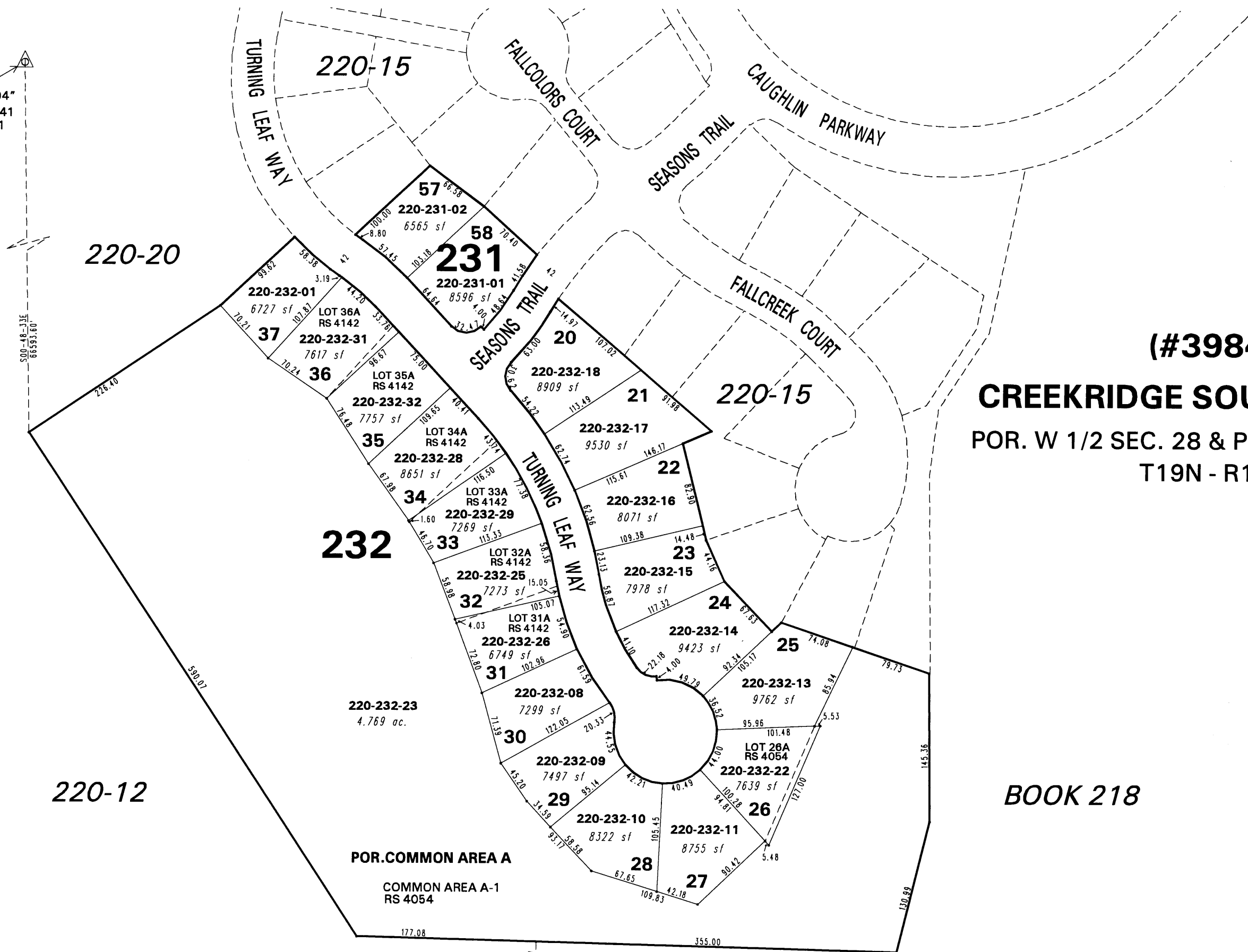


220-23

GPS STATION
"FAA REA A 1994"
N 14,918,263.341
E 2,262,347.761



(#3984)

CREEKRIDGE SOUTH UNIT #3
POR. W 1/2 SEC. 28 & POR. E 1/2 SEC. 29
T19N - R19E

BOOK 218



1" = 100'



NOTE: This map is prepared for the use of the Washoe County Assessor for assessment and illustrative purposes only. It does not represent a survey of the premises. No liability is assumed as to the sufficiency or the accuracy of the data delineated hereon.

Office of Washoe County Assessor, Nevada - Robert W. McGowan

This area previously shown on 220-14

NOTE: Areas of parcels which are less than 2 acres are shown in square feet.

Drawn by HCS 08/10/01
Revised HCS 4/15/02 HCS 10/10/02
KSB 10/22/03