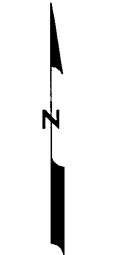
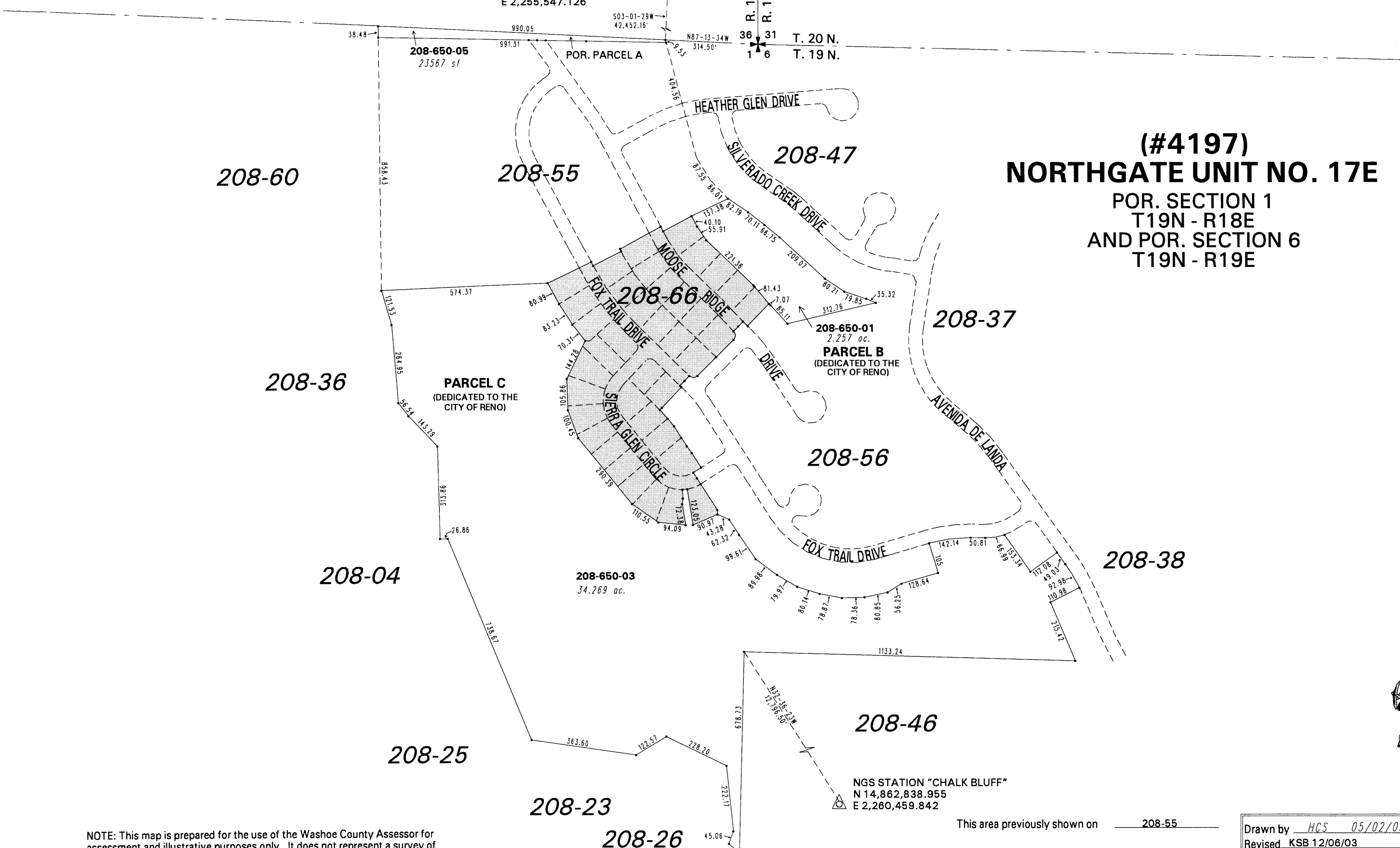


NGS STATION "RENO AIR BASE"
N 14,918,086.299
E 2,255,547.126

R. 18 E.
R. 19 E.
T. 20 N.
T. 19 N.

**(#4197)
NORTHGATE UNIT NO. 17E**

POR. SECTION 1
T19N - R18E
AND POR. SECTION 6
T19N - R19E



1" = 300'



NOTE: This map is prepared for the use of the Washoe County Assessor for assessment and illustrative purposes only. It does not represent a survey of the premises. No liability is assumed as to the sufficiency or the accuracy of the data delineated hereon.

Office of Washoe County Assessor, Nevada - Robert W. McGowan

This area previously shown on 208-55

NOTE: Areas of parcels which are less than 2 acres are shown in square feet.

Drawn by HCS 05/02/03
Revised KSB 12/06/03