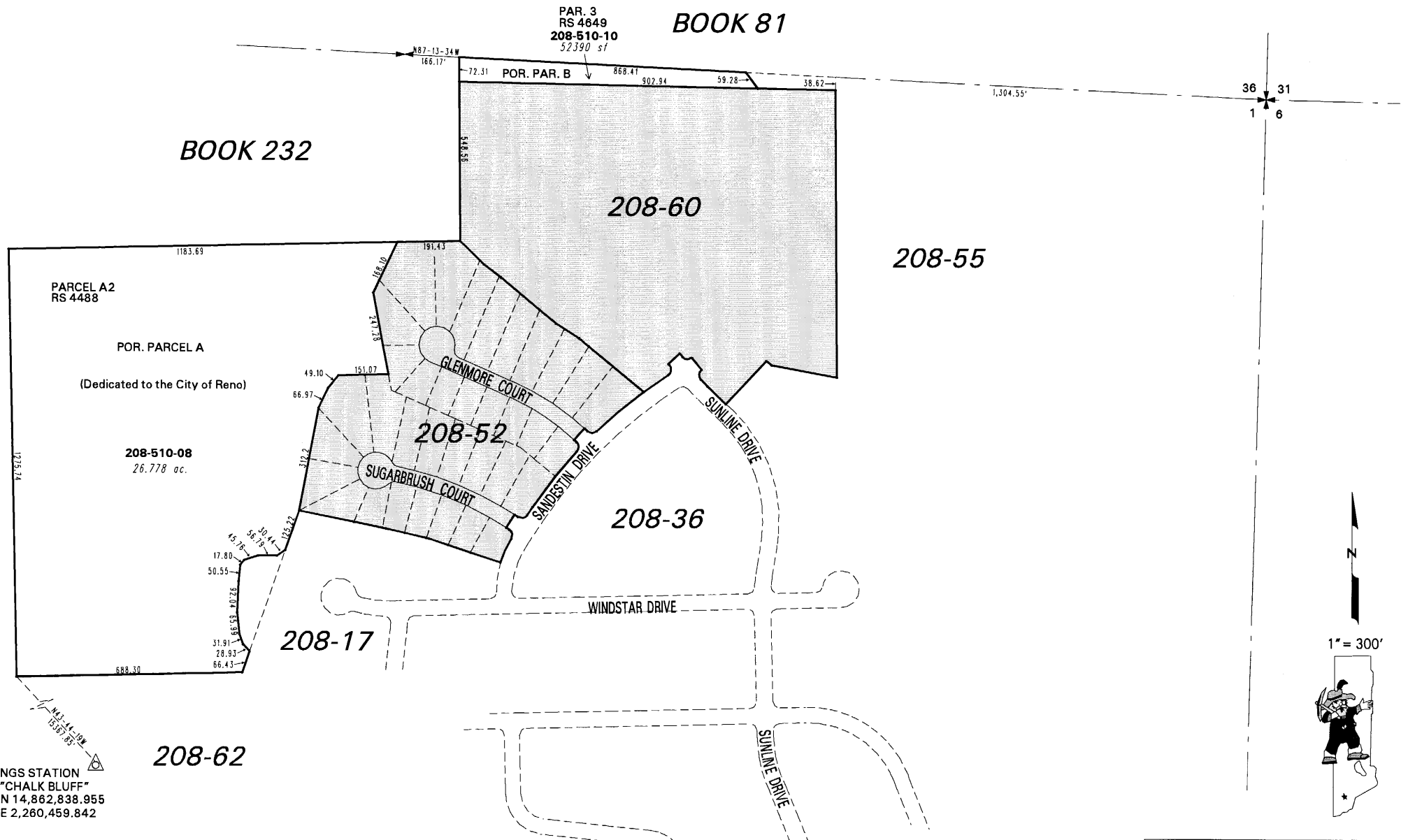


(#4042)
NORTHGATE UNIT NO. 11C

POR. SECTION 1
T19N - R18E

BOOK 81

PAR. 3
RS 4649
208-510-10
52390 sf



NGS STATION
"CHALK BLUFF"
N 14,862,838.955
E 2,260,459.842

NOTE: This map is prepared for the use of the Washoe County Assessor for assessment and illustrative purposes only. It does not represent a survey of the premises. No liability is assumed as to the sufficiency or the accuracy of the data delineated hereon.

Office of Washoe County Assessor, Nevada - Robert W. McGowan

This area previously shown on 39-01 & 208-46

NOTE: Areas of parcels which are less than 2 acres are shown in square feet.

Drawn by	HCS	02/12/02
Revised	KSB	12/22/04 KSB 7/29/05
	KSB	1/18/06 KSB 4/29/06