

208-43

208-44

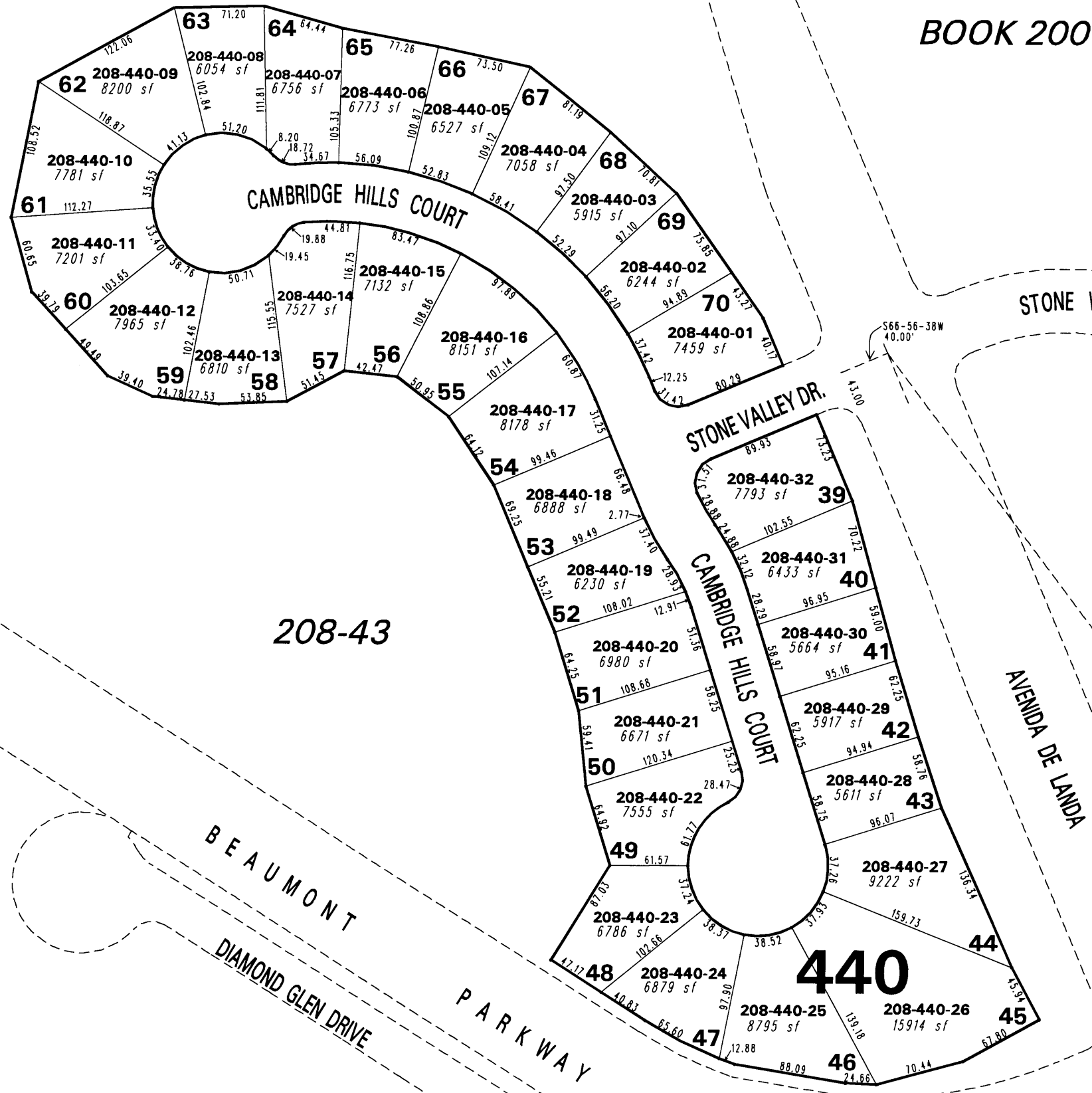
BOOK 200

(#3927)

NORTHGATE UNIT NO. 18B

PORTION OF SECTION 7

T19N - R19E



208-43

STONE VALLEY DRIVE

BOOK 200

AVENIDA DE LANDA

BEAUMONT

DIAMOND GLEN DRIVE

PARKWAY

NGS STATION
 "CHALK BLUFF"
 N 14,862,838.955
 E 2,260,459.842

1" = 100'



NOTE: This map is prepared for the use of the Washoe County Assessor for assessment and illustrative purposes only. It does not represent a survey of the premises. No liability is assumed as to the sufficiency or the accuracy of the data delineated hereon.

Office of Washoe County Assessor, Nevada - Robert W. McGowan

This area previously shown on 208-32

NOTE: Areas of parcels which are less than 2 acres are shown in square feet.

Drawn by HCS 3/22/01
 Revised HCS 1/6/03