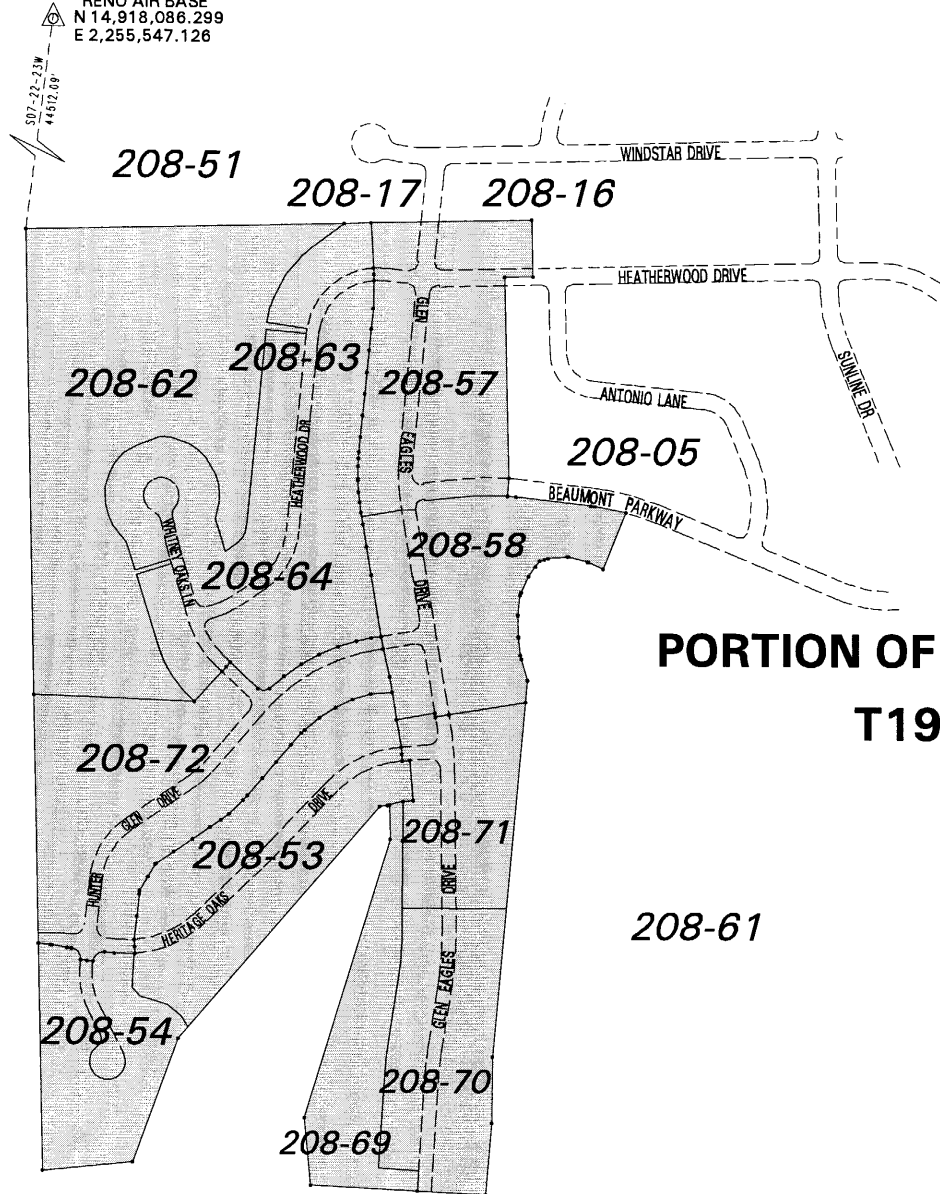


NGS STATION  
"RENO AIR BASE"  
N 14,918,086.299  
E 2,255,547.126

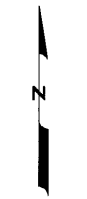


**PORTION OF SECTIONS 1, 12 & 13  
T19N - R18E**

BOOK 232

BOOK 232

208-61



1" = 400'



NOTE: This map is prepared for the use of the Washoe County Assessor for assessment and illustrative purposes only. It does not represent a survey of the premises. No liability is assumed as to the sufficiency or the accuracy of the data delineated hereon.

Office of Washoe County Assessor, Nevada - Robert W. McGowan

This area previously shown on 39-15

NOTE: Areas of parcels which are less than 2 acres are shown in square feet.

Drawn by	DSR	03/22/99
Revised	KSB 10/07/03	KSB 4/17/04
	KSB 8/17/05	KSB 9/25/06