

(#4680)  
**BRECKENRIDGE SUBDIVISION**  
PORTION OF THE SE 1/4 OF SECTION 8  
T19N - R19E

SIMONS DRIVE

• STREETS FOR TRACT MAP #4680 ARE PRIVATE.

BOOK 39

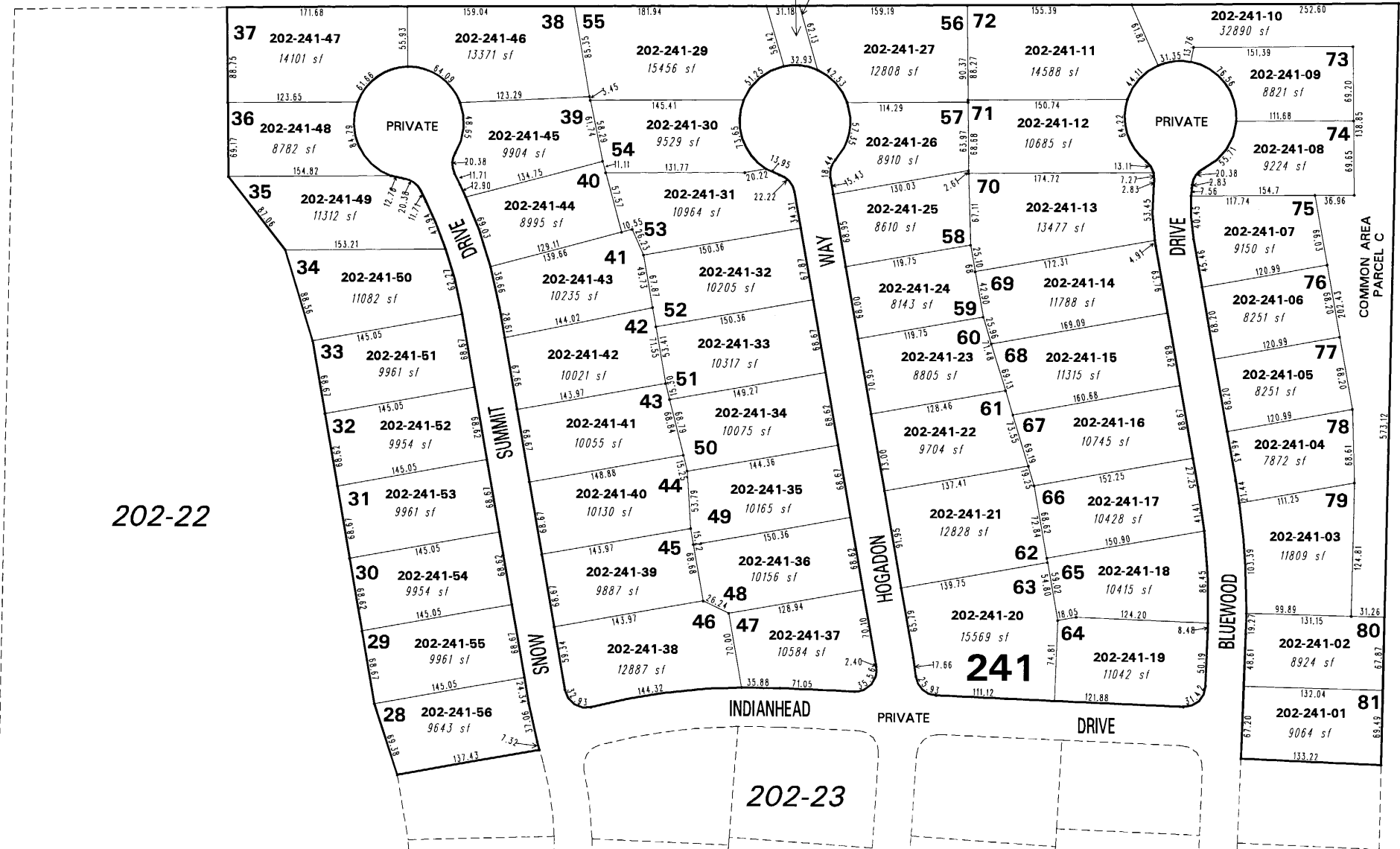
BOOK 39

COMMON AREA  
PARCEL B  
202-241-28  
1753 sf  
30' EMERGENCY VEHICLE  
ACCESS EASEMENT  
(NO PUBLIC ACCESS)

202-22

202-20

202-23



NOTE: This map is prepared for the use of the Washoe County Assessor for assessment and illustrative purposes only. It does not represent a survey of the premises. No liability is assumed as to the sufficiency or the accuracy of the data delineated hereon.

Office of Washoe County Assessor, Nevada - Robert W. McGowan

This area previously shown on 39-78 & 202-16

NOTE: Areas of parcels which are less than 2 acres are shown in square feet.

Drawn by PK 8/25/06  
 Revised \_\_\_\_\_  
 ARC INFO B.O. WINDOWS 2005.0

1" = 100'

