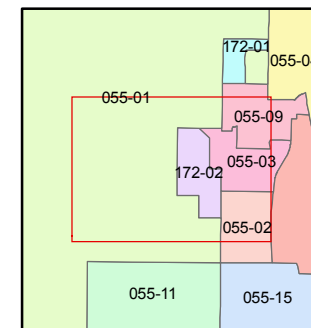
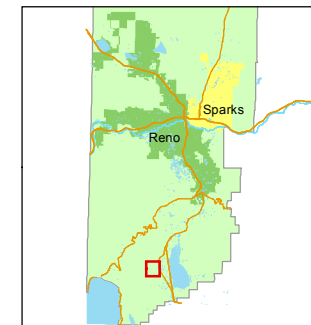


1 inch = 400 feet

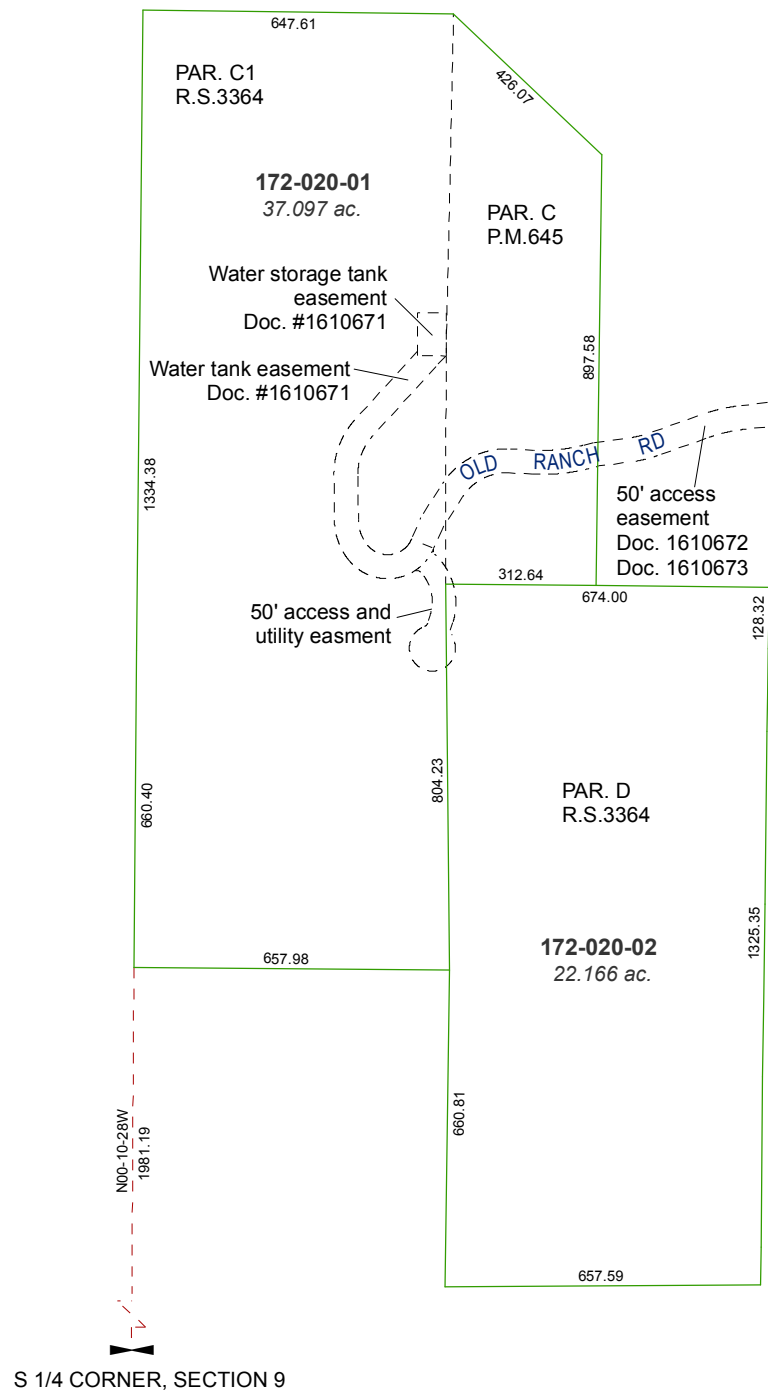


created by: DSR 11/2/2011

last updated: CFB 11/10/2011

area previously shown on map(s)  
055-01

PORTIONS OF SW1/4 NE1/4  
AND NW1/4 SE1/4  
SECTION 9, T16N, R19E



NOTE: This map was prepared for the use of the Washoe County Assessor for assessment and illustrative purposes only. It does not represent a survey of the premises. No liability is assumed as to the sufficiency or accuracy of the data delineated hereon.