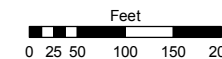
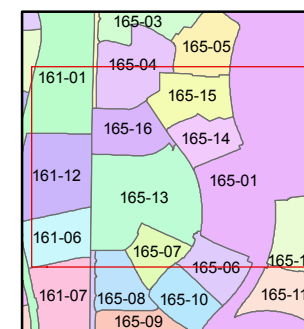
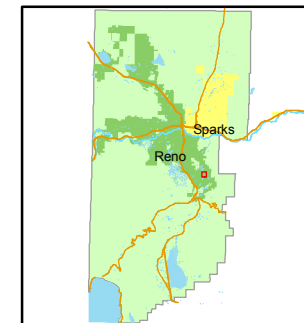


STATE OF NEVADA  
**WASHOE COUNTY**  
ASSESSOR'S OFFICE  
Joshua G. Wilson, Assessor

1001 East Ninth Street  
Building D  
Reno, Nevada 89512  
(775) 328-2231



1 inch = 200 feet



created by: NLH 6/26/2009

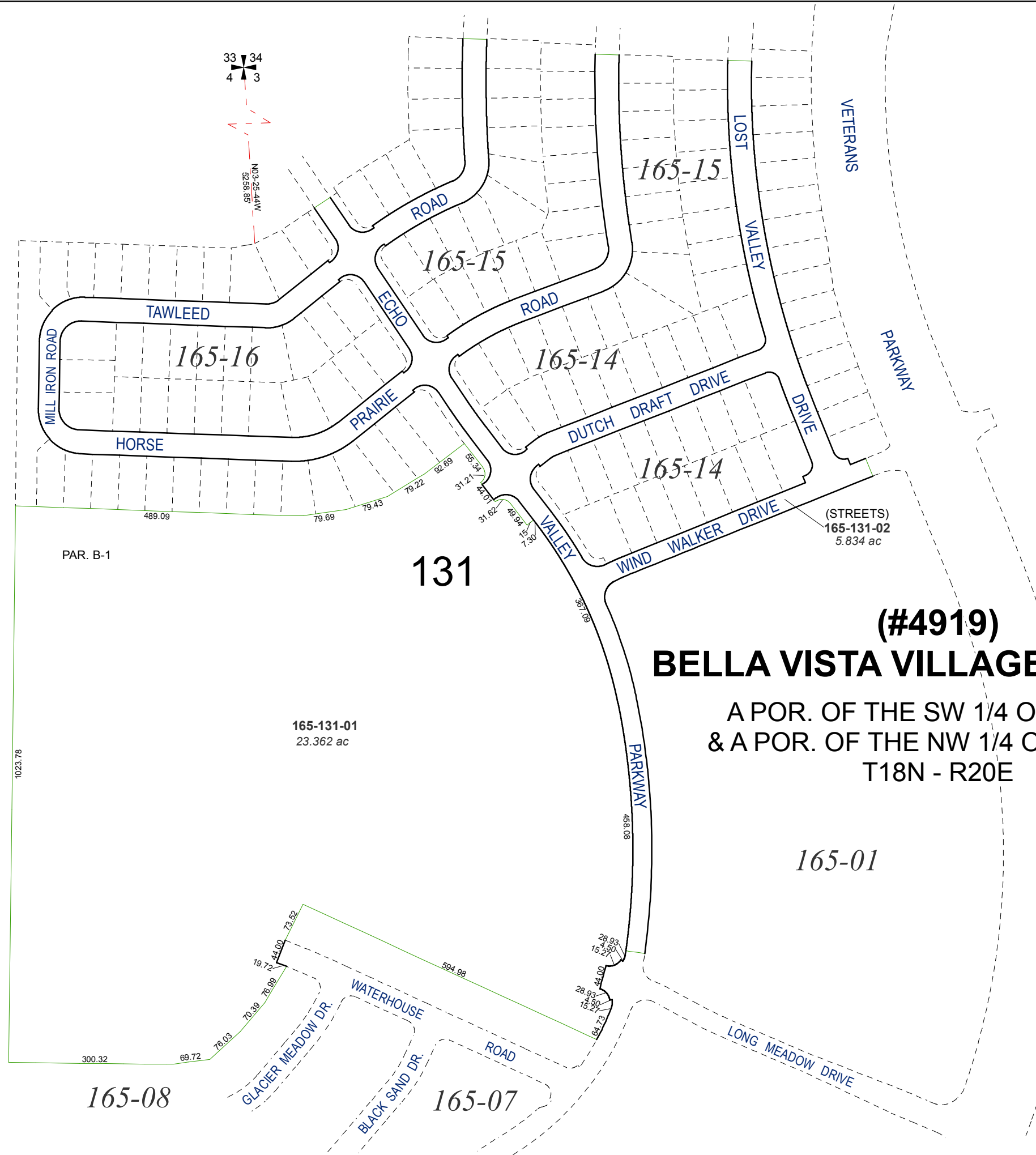
last updated: \_\_\_\_\_

area previously shown on map(s)

165-01

NOTE: This map was prepared for the use of the Washoe County Assessor for assessment and illustrative purposes only. It does not represent a survey of the premises. No liability is assumed as to the sufficiency or accuracy of the data delineated hereon.

BOOK  
161



PAR. B-1

131

**(#4919)**  
**BELLA VISTA VILLAGE A - UNIT 2**

A POR. OF THE SW 1/4 OF SEC. 3,  
& A POR. OF THE NW 1/4 OF SEC. 10,  
T18N - R20E

165-01

165-08

165-07

165-131-01  
23.362 ac

(STREETS)  
165-131-02  
5.834 ac

165-15

165-15

165-14

165-14

165-16

TAWLEED

HORSE

PRAIRIE

ECHO

ROAD

ROAD

DUTCH DRAFT DRIVE

WIND WALKER DRIVE

PARKWAY

LONG MEADOW DRIVE

VETERANS

PARKWAY

LOST VALLEY DRIVE

VALLEY DRIVE

GLACIER MEADOW DR.  
BLACK SAND DR.

WATERHOUSE ROAD

ROAD



1023.78

489.09

79.69

79.43

79.22

92.69

55.34

31.21

42.01

31.62

49.94

42.93

367.09

458.08

28.93

15.27

27.52

44.00

28.93

15.27

27.52

44.00

28.93

15.27

27.52

44.00

28.93

15.27

27.52

44.00

19.72

70.39

76.99

44.00

73.52

594.98

300.32

69.72

76.03

70.39

76.99

44.00

73.52

594.98

300.32

69.72

76.03

70.39

76.99

44.00

73.52

594.98

300.32