

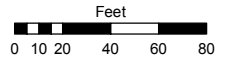
# A POR. OF THE W 1/2 OF SEC. 32, T19N - R20E

Assessor's Map Number

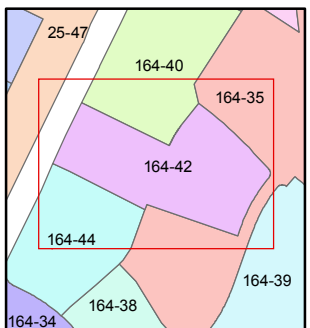
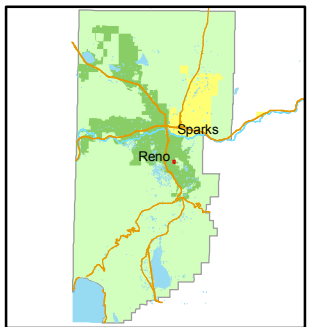
**164-42**

STATE OF NEVADA  
**WASHOE COUNTY**  
**ASSESSOR'S OFFICE**  
 Joshua G. Wilson, Assessor

1001 East Ninth Street  
 Building D  
 Reno, Nevada 89512  
 (775) 328-2231



1 inch = 80 feet



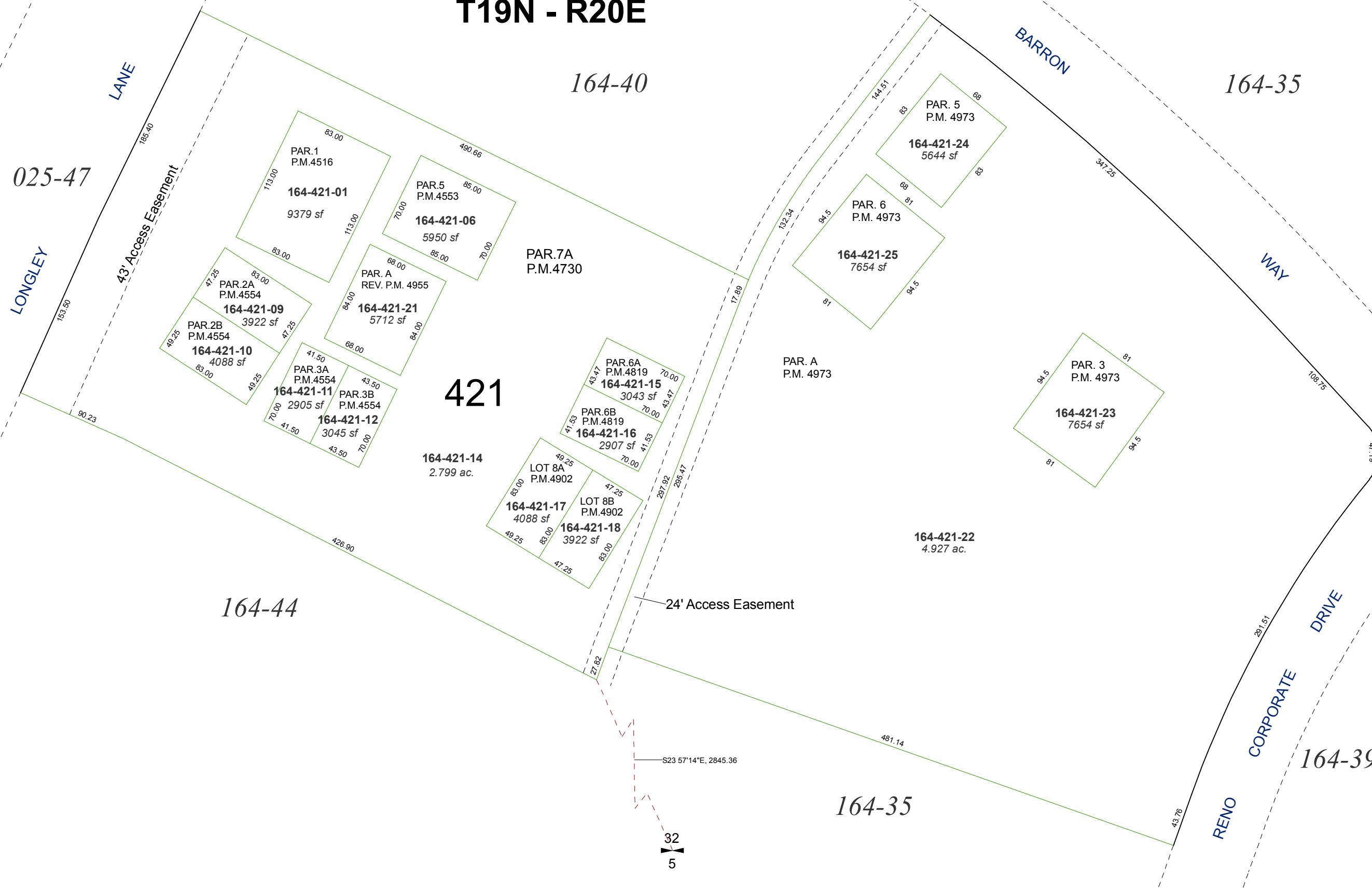
created by: NLH 6/11/2009

last updated: \_\_\_\_\_

area previously shown on map(s)

164-35

NOTE: This map was prepared for the use of the Washoe County Assessor for assessment and illustrative purposes only. It does not represent a survey of the premises. No liability is assumed as to the sufficiency or accuracy of the data delineated hereon.



32  
5