

161-34

161-35

# (#4440) DOUBLE DIAMOND RANCH VILLAGE 8B

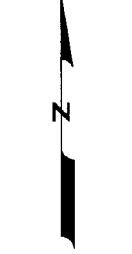
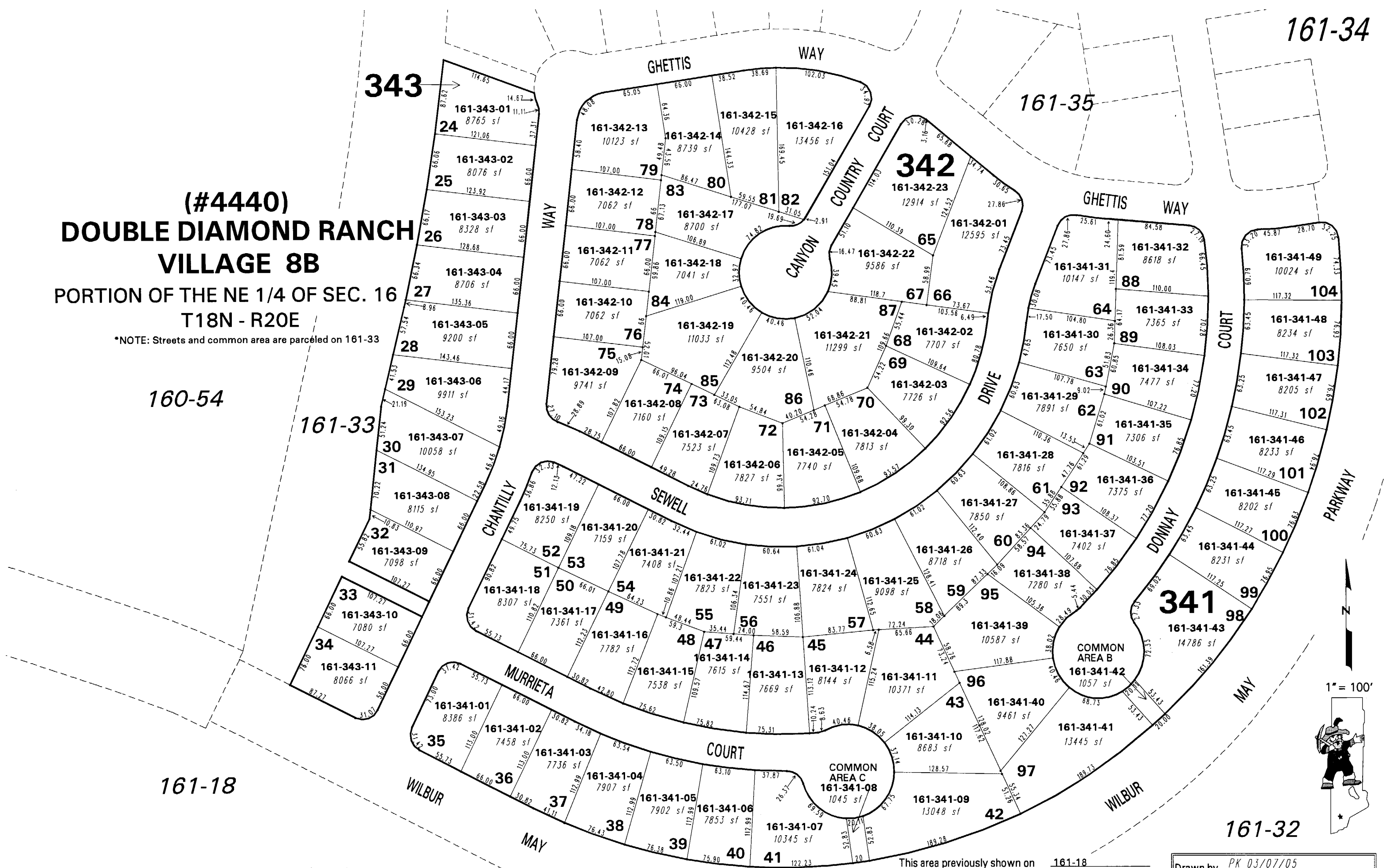
PORTION OF THE NE 1/4 OF SEC. 16  
T18N - R20E

\*NOTE: Streets and common area are parceled on 161-33

160-54

161-33

161-18



1" = 100'



NOTE: This map is prepared for the use of the Washoe County Assessor for assessment and illustrative purposes only. It does not represent a survey of the premises. No liability is assumed as to the sufficiency or the accuracy of the data delineated hereon.

Office of Washoe County Assessor, Nevada - Robert W. McGowan

This area previously shown on 161-18

NOTE: Areas of parcels which are less than 2 acres are shown in square feet.

Drawn by PK 03/07/05  
 Revised \_\_\_\_\_