

"NALS GPS 8"  
 WASHOE COUNTY "GPS 907"  
 N14,840,817.00  
 E 2,291,007.44

161-04

161-11

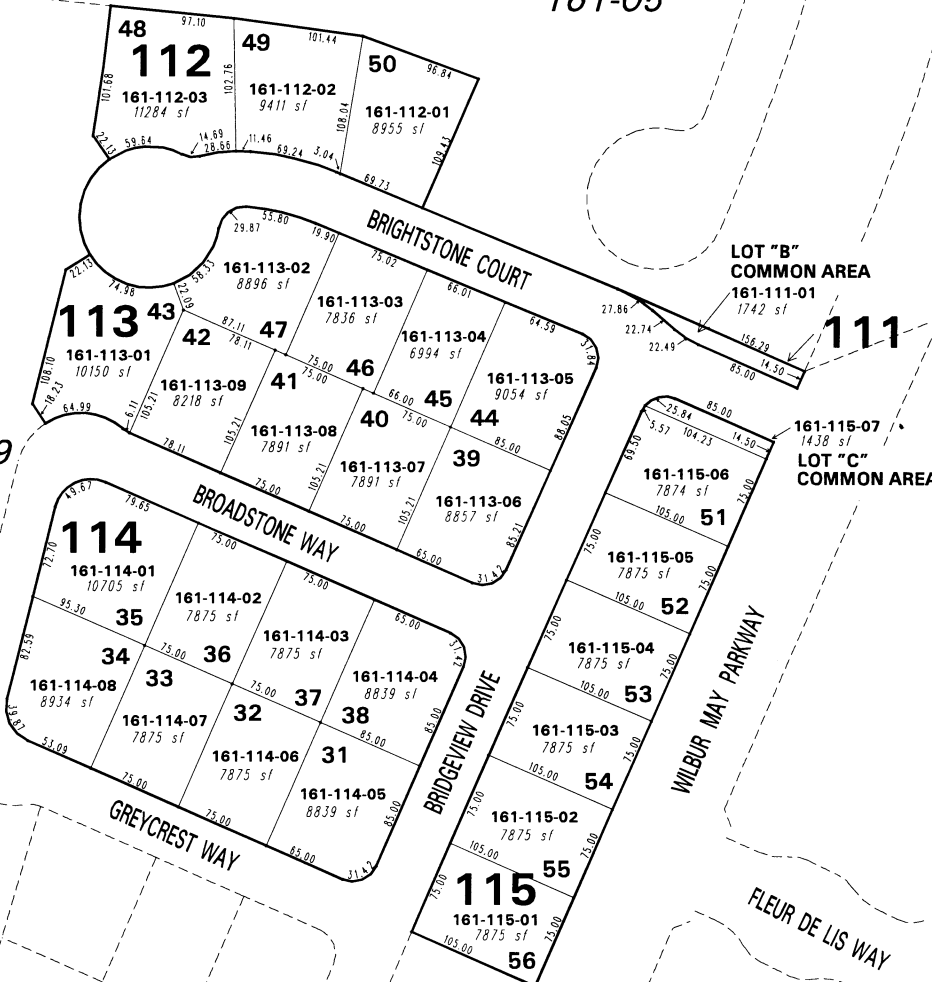
161-05

BOOK 160

161-09

161-10

161-08



**(#4016)**  
**DOUBLE DIAMOND RANCH**  
**VILLAGE 25**  
 A PLANNED UNIT DEVELOPMENT  
 PORTION OF THE E 1/2 OF SECTION 9  
 T18N - R20E

NOTE: This map is prepared for the use of the Washoe County Assessor for assessment and illustrative purposes only. It does not represent a survey of the premises. No liability is assumed as to the sufficiency or the accuracy of the data delineated hereon.

Office of Washoe County Assessor, Nevada - Robert W. McGowan

NOTE: Streets and Lot "A" Common Area parcelled on 161-09

This area previously shown on 161-01

NOTE: Areas of parcels which are less than 2 acres are shown in square feet.

Drawn by HCS 11/13/01  
 Revised \_\_\_\_\_

