

(#4142)

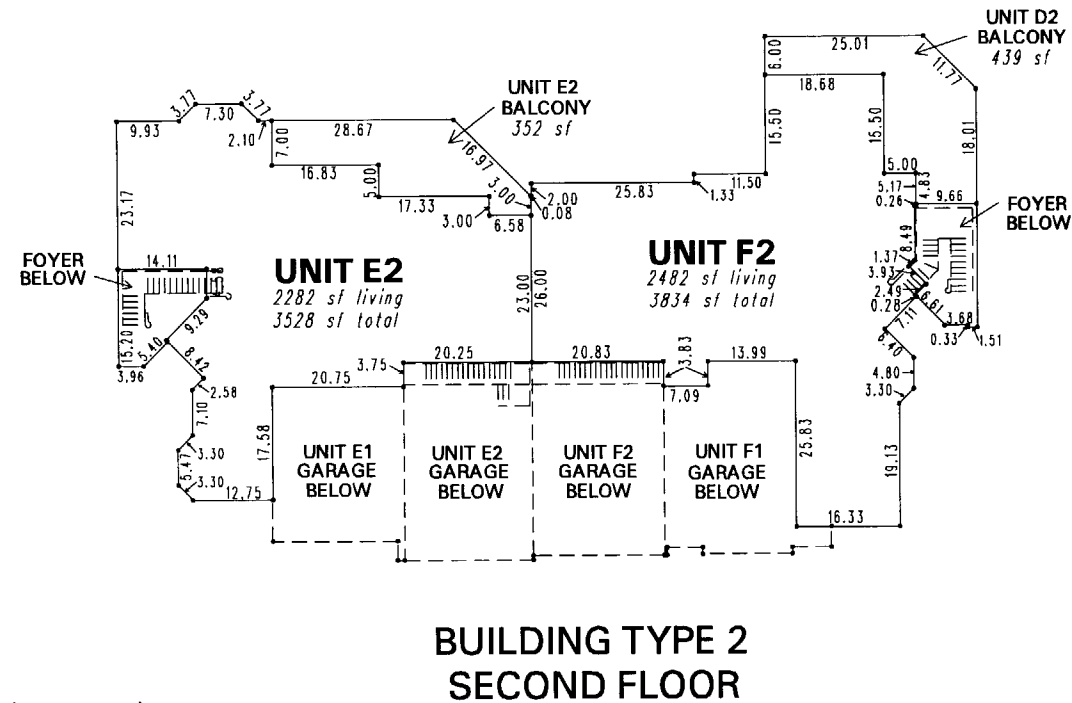
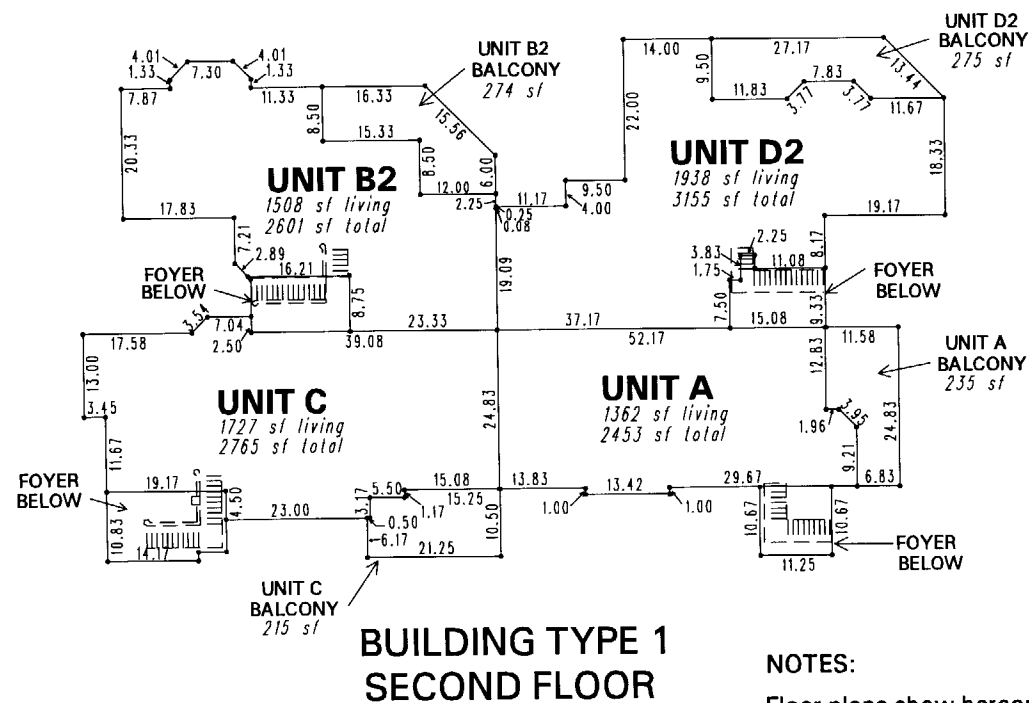
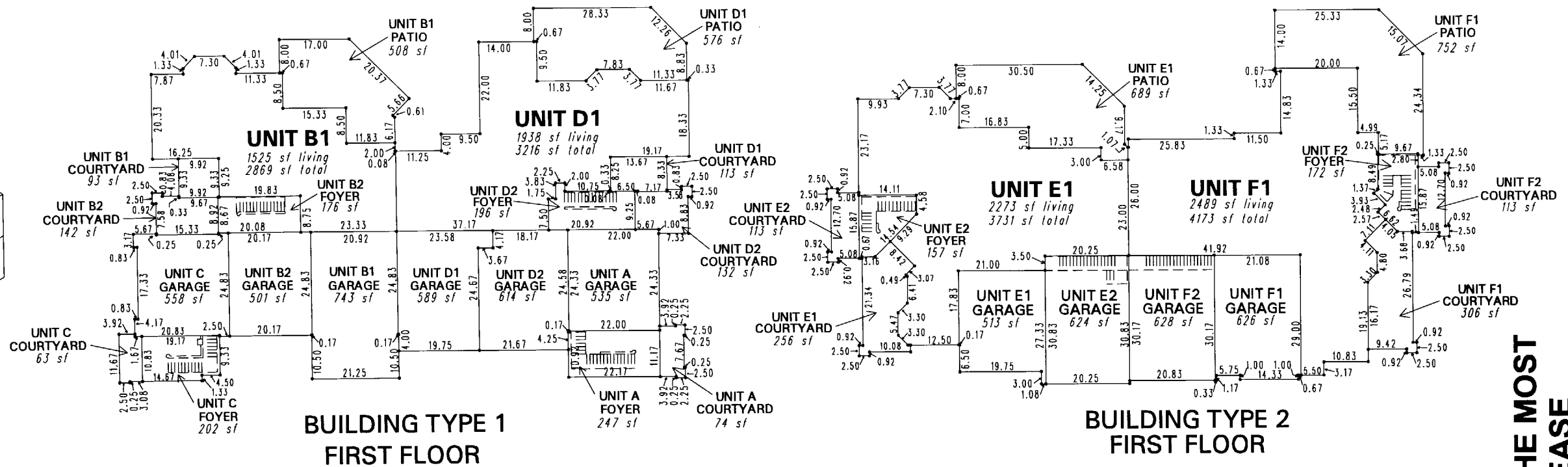
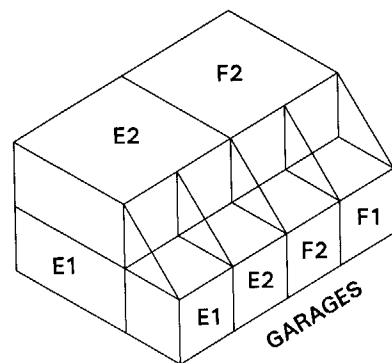
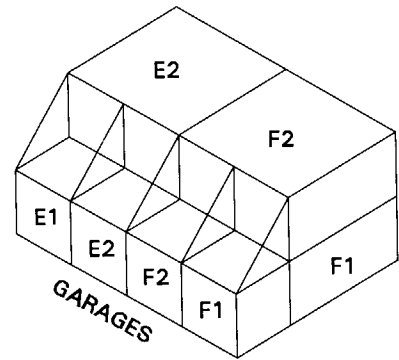
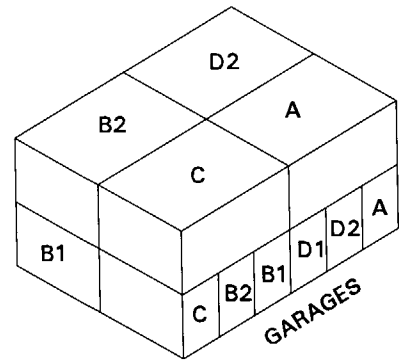
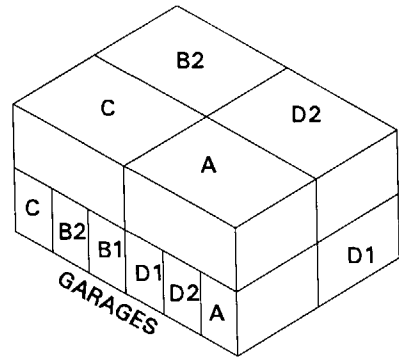
FLEUR DE LIS - PHASE 1

A MERGER AND RESUBDIVISION OF DOUBLE DIAMOND RANCH VILLAGE 26, TRACT MAP #4010

PLANNED UNIT DEVELOPMENT A COMMON-INTEREST COMMUNITY

PORTION OF SECTION 9

T18N - R20E



NOTES:

Floor plans show hereon may be reversed on actual plot plan

Building dimensions given are to outside of exterior walls and to center of interior walls

Total square footage of each unit includes the areas for the patio, balcony, foyer, courtyard and garages, in addition to that of the living area

This area previously shown on 161-01

NOTE: Areas of parcels which are less than 2 acres are shown in square feet.

3/4/2004 - THIS IS THE MOST RECENT MAP - PLEASE DISCARD ALL OTHERS



1" = 30'



NOTE: This map is prepared for the use of the Washoe County Assessor for assessment and illustrative purposes only. It does not represent a survey of the premises. No liability is assumed as to the sufficiency or the accuracy of the data delineated hereon.

Office of Washoe County Assessor, Nevada - Robert W. McGowan

Drawn by HCS 11/06/01
 Revised HCS 11/26/02 CFB 2/26/2003