

PORTION OF S½ SECTION 10
T17N - R19E

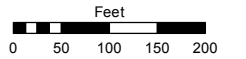
(#3059)
NADIA COURT SUBDIVISION

Assessor's Map Number

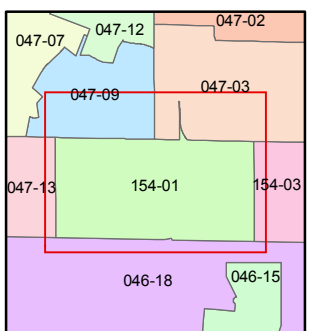
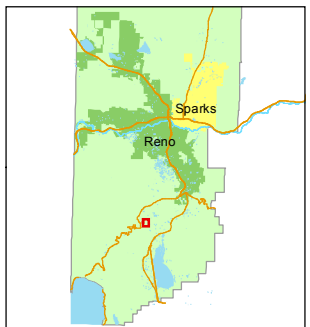
154-01

STATE OF NEVADA
WASHOE COUNTY
ASSESSOR'S OFFICE
Joshua G. Wilson, Assessor

1001 East Ninth Street
Building D
Reno, Nevada 89512
(775) 328-2231



1 inch = 200 feet



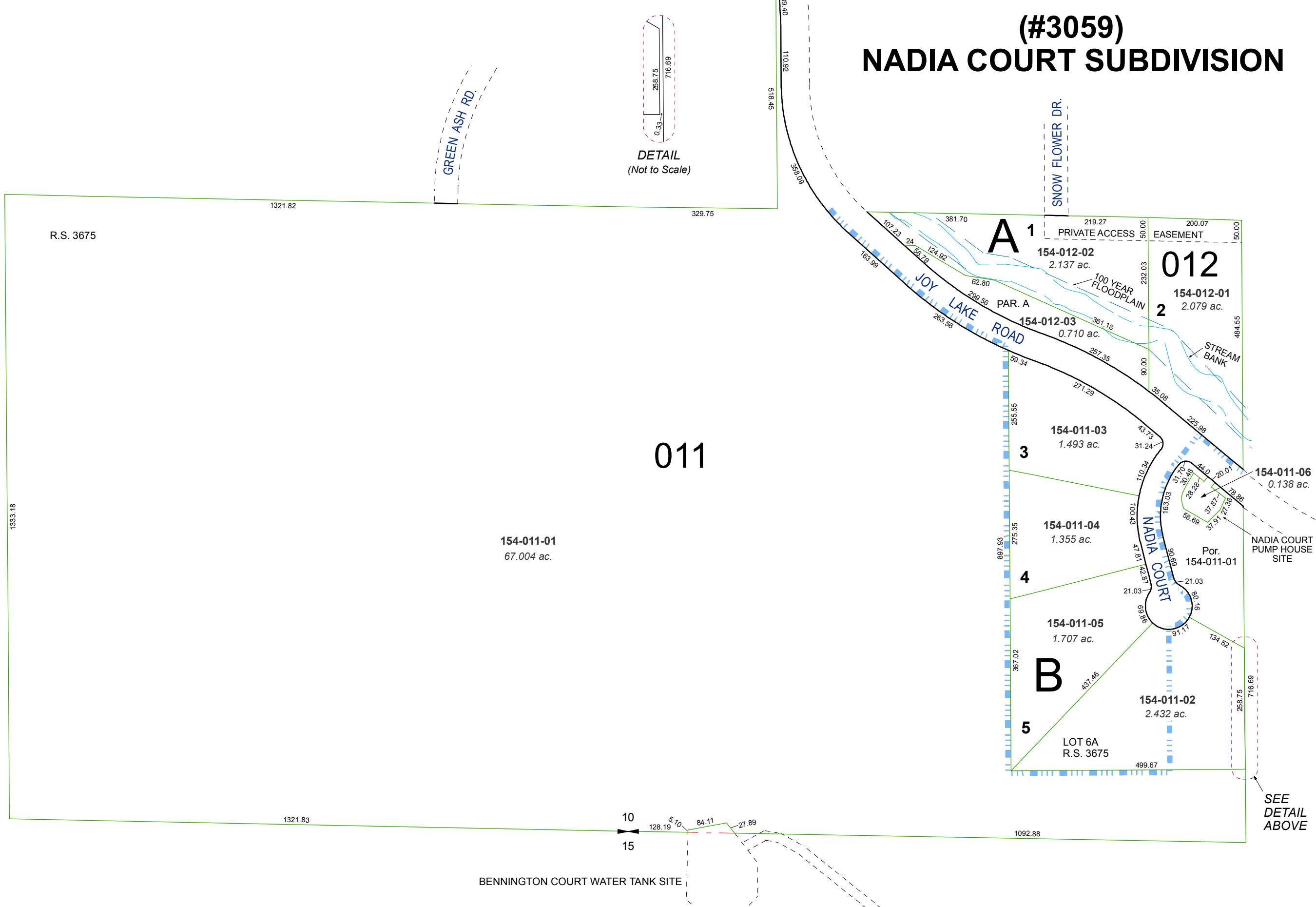
created by: KSB 3/07/2012

last updated: _____

area previously shown on map(s)

047-01

NOTE: This map was prepared for the use of the Washoe County Assessor for assessment and illustrative purposes only. It does not represent a survey of the premises. No liability is assumed as to the sufficiency or accuracy of the data delineated hereon.



DETAIL
(Not to Scale)