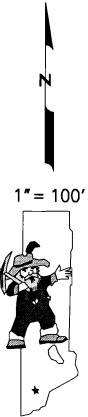
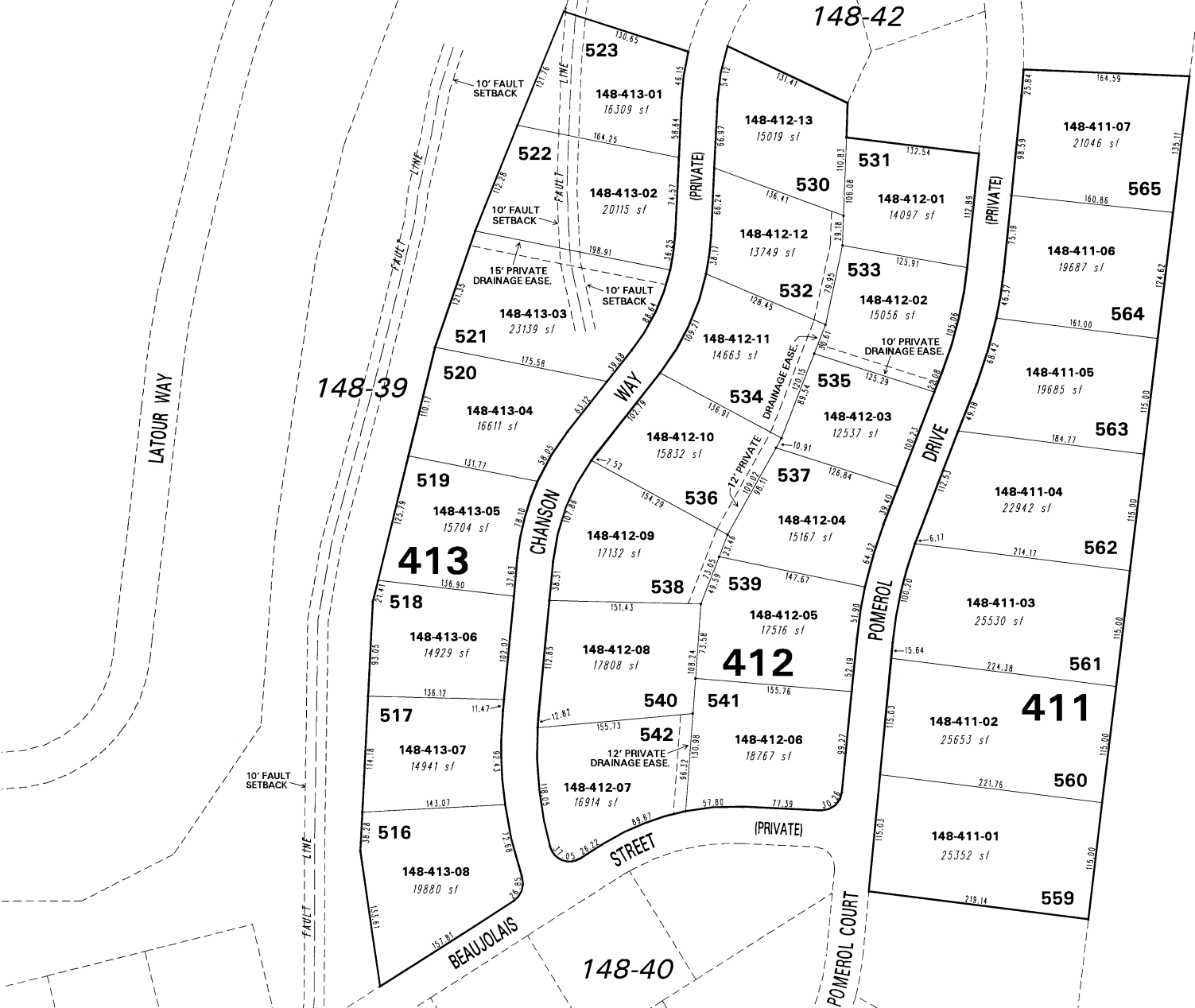


**(#4879)  
MONTREUX  
UNIT 5 - SOUTH**  
A COMMON INTEREST COMMUNITY  
PORTION OF W 1/2 SECTION 11  
T17N - R19E

BOOK 47



NOTE: This map is prepared for the use of the Washoe County Assessor for assessment and illustrative purposes only. It does not represent a survey of the premises. No liability is assumed as to the sufficiency or the accuracy of the data delineated hereon.

Office of Washoe County Assessor, Nevada - Joshua G. Wilson

This area previously shown on 148-31

NOTE: Areas of parcels which are less than 2 acres are shown in square feet.

Drawn by	<u>KSB 08/05/08</u>
Revised	