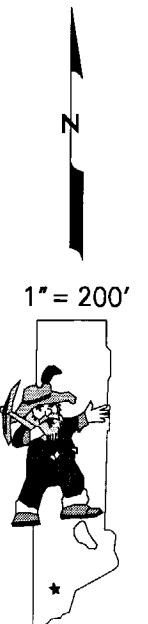
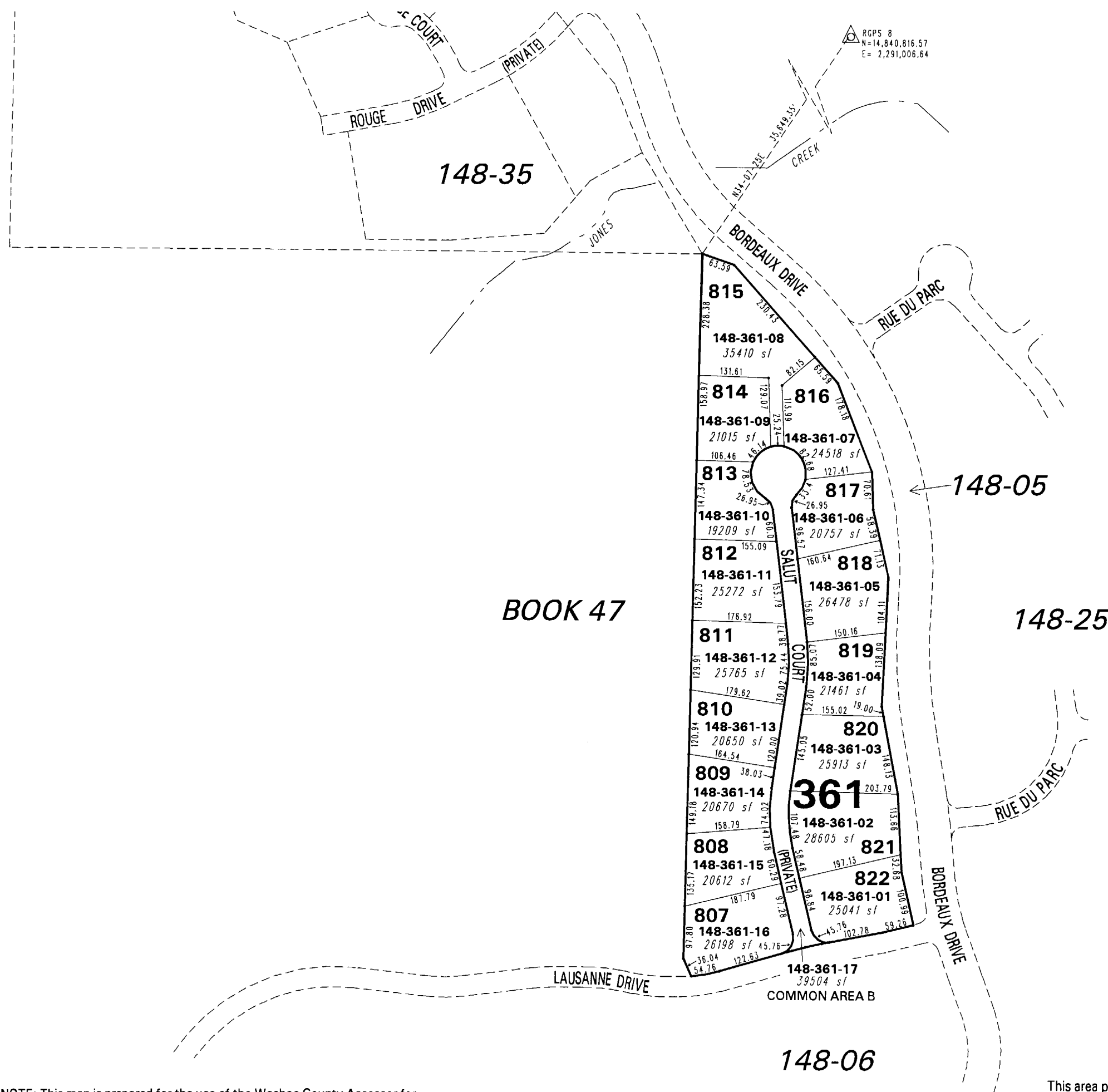


**(#4550)  
MONTREUX - UNIT 8  
A COMMON INTEREST COMMUNITY  
PORTION OF N 1/2 SECTION 3  
T17N - R19E**



NOTE: This map is prepared for the use of the Washoe County Assessor for assessment and illustrative purposes only. It does not represent a survey of the premises. No liability is assumed as to the sufficiency or the accuracy of the data delineated hereon.

Office of Washoe County Assessor, Nevada - Robert W. McGowan

This area previously shown on 148-01

NOTE: Areas of parcels which are less than 2 acres are shown in square feet.

Drawn by KSB 10/25/05  
Revised \_\_\_\_\_