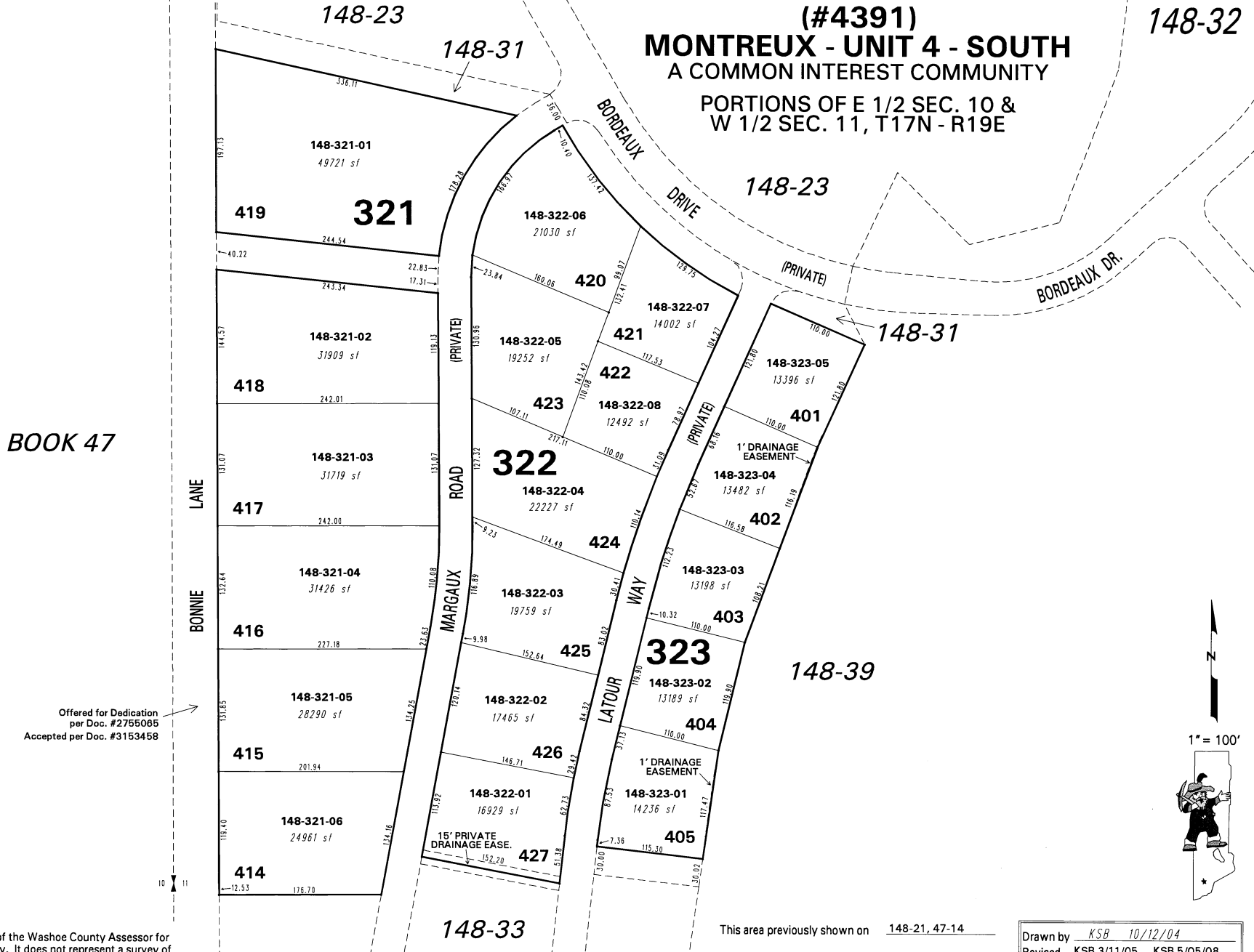
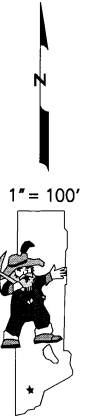


(#4391)
MONTREUX - UNIT 4 - SOUTH
 A COMMON INTEREST COMMUNITY
 PORTIONS OF E 1/2 SEC. 10 &
 W 1/2 SEC. 11, T17N - R19E



BOOK 47

Offered for Dedication
 per Doc. #2755085
 Accepted per Doc. #3153458



NOTE: This map is prepared for the use of the Washoe County Assessor for assessment and illustrative purposes only. It does not represent a survey of the premises. No liability is assumed as to the sufficiency or the accuracy of the data delineated hereon.

Office of Washoe County Assessor, Nevada - Joshua G. Wilson

This area previously shown on 148-21, 47-14

NOTE: Areas of parcels which are less than 2 acres are shown in square feet.

Drawn by	KSB	10/12/04
Revised	KSB	3/11/05 KSB 5/05/08
	KSB	8/07/08