

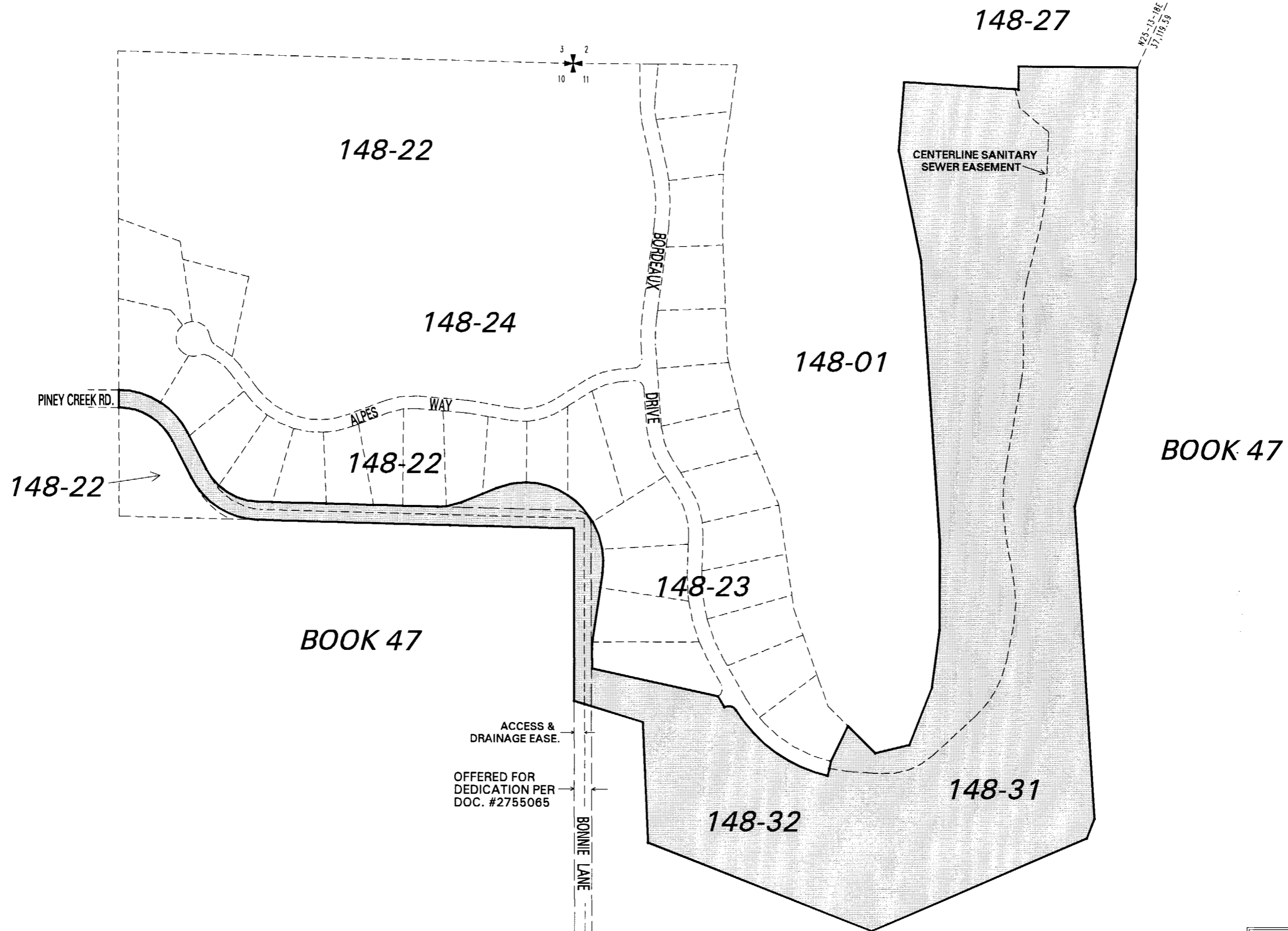
MONTREUX - UNIT 2 - SOUTH (#3894)

A COMMON INTEREST COMMUNITY

PORTIONS OF SECTIONS 10 & 11, T17N - R19E

148-21

GPS 18
N=14,840,686.88
E= 2,290,987.79



NOTE: This map is prepared for the use of the Washoe County Assessor for assessment and illustrative purposes only. It does not represent a survey of the premises. No liability is assumed as to the sufficiency or the accuracy of the data delineated hereon.

Office of Washoe County Assessor, Nevada - Robert W. McGowan

This area previously shown on 47-01, 148-01

NOTE: Areas of parcels which are less than 2 acres are shown in square feet.

Drawn by KSB 02/02/01
Revised HCS 1/3/03 KSB 8/18/03
KSB 8/17/04 KSB 10/13/04