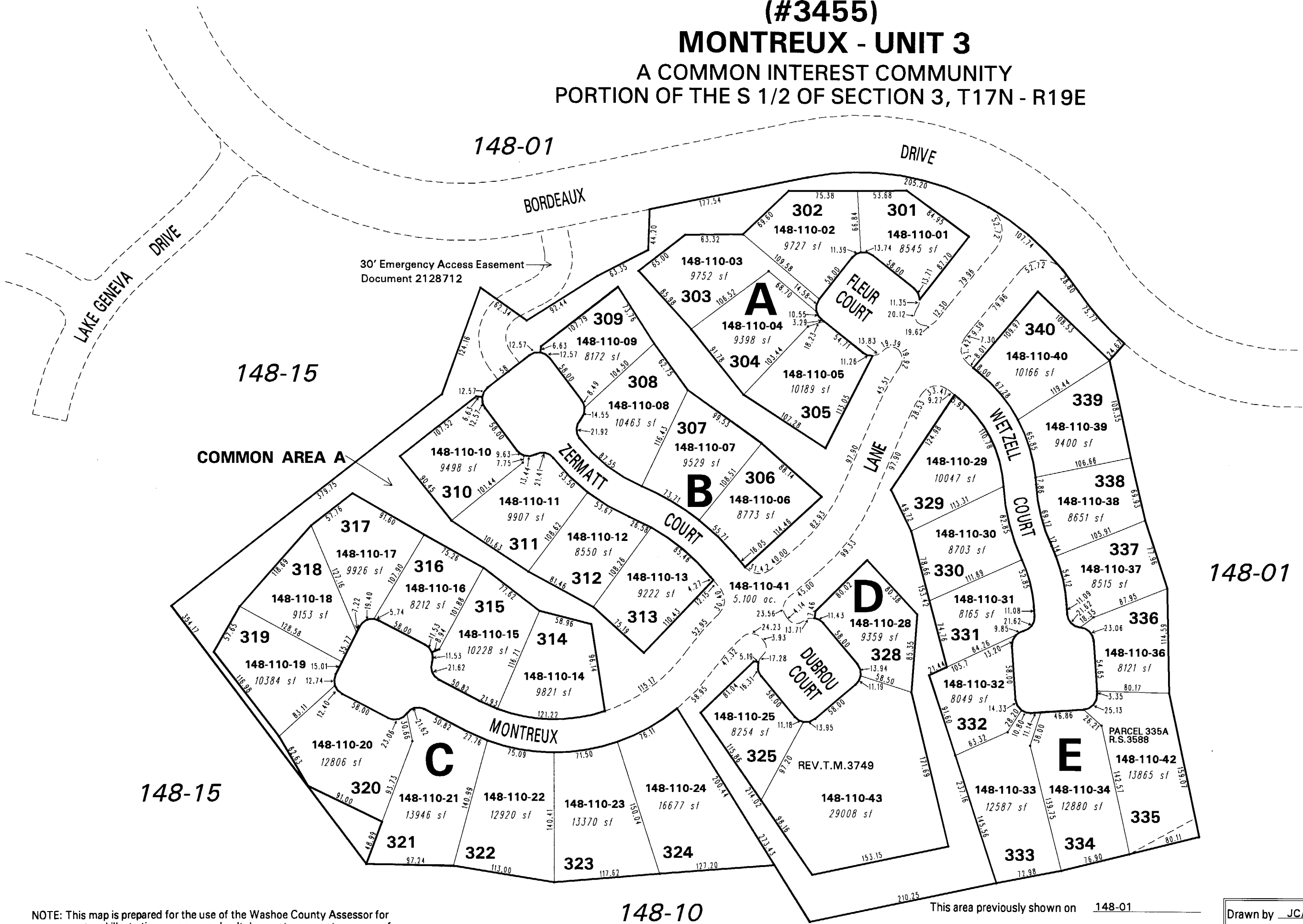


(#3455)  
**MONTREUX - UNIT 3**  
A COMMON INTEREST COMMUNITY  
PORTION OF THE S 1/2 OF SECTION 3, T17N - R19E



148-15

148-15

148-01

148-10

NOTE: This map is prepared for the use of the Washoe County Assessor for assessment and illustrative purposes only. It does not represent a survey of the premises. No liability is assumed as to the sufficiency or the accuracy of the data delineated hereon.

Office of Washoe County Assessor, Nevada - Robert W. McGowan

This area previously shown on 148-01

NOTE: Areas of parcels which are less than 2 acres are shown in square feet.

Drawn by JC/CFB 10/15/97  
Revised CFB 5/20/99 KS 6/25/99  
CFB 10/14/99 KSB 5/26/06