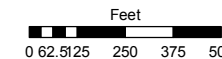
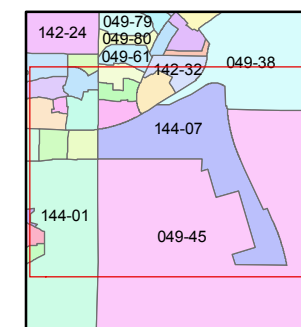
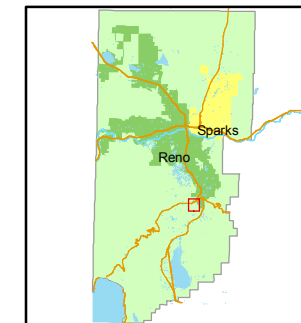


STATE OF NEVADA
WASHOE COUNTY
ASSESSOR'S OFFICE
Joshua G. Wilson, Assessor

1001 East Ninth Street
Building D
Reno, Nevada 89512
(775) 328-2231



1 inch = 500 feet



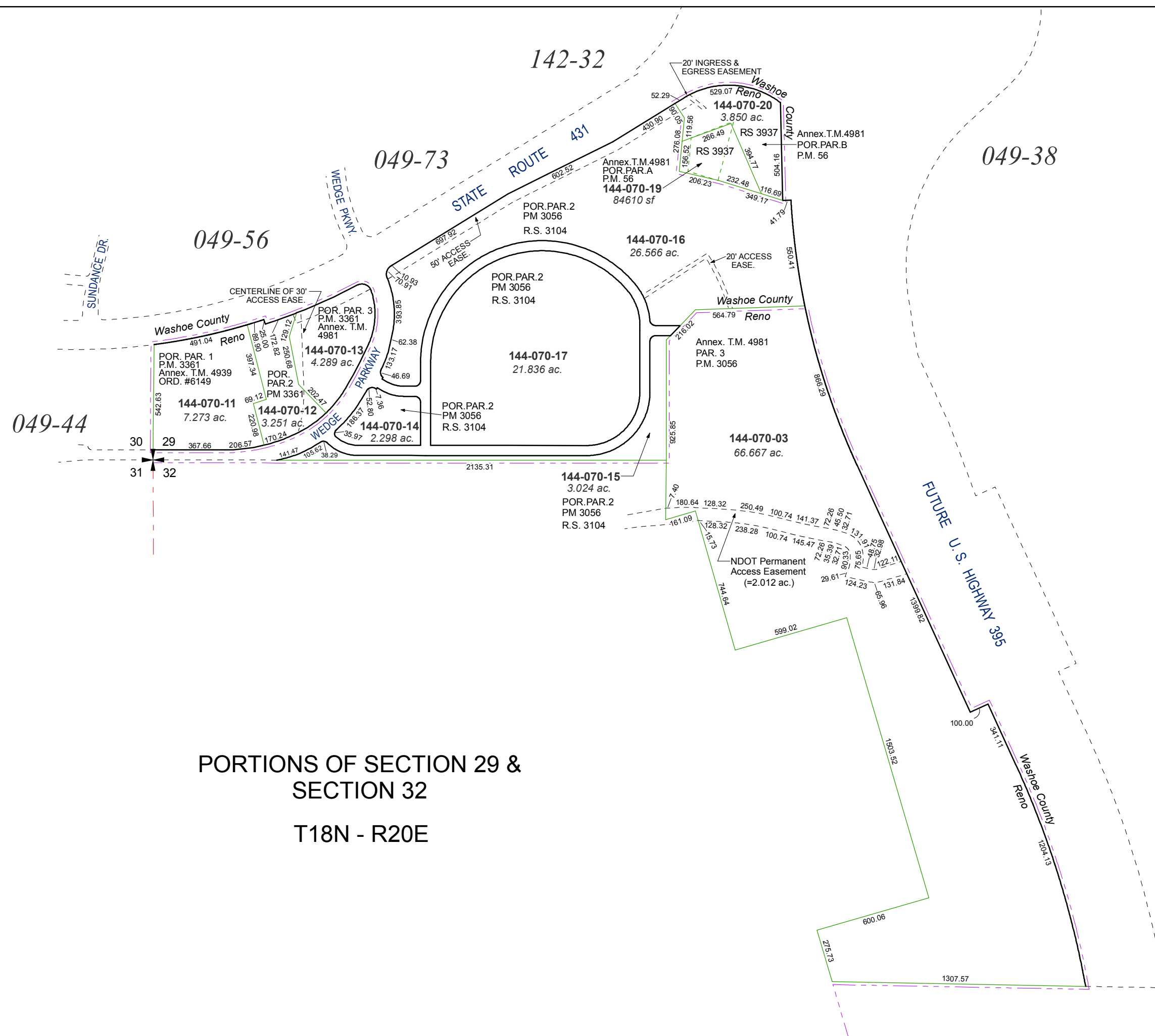
created by: KSB 7/09/2010

last updated: NLH 7/19/11

area previously shown on map(s)

049-38 & 049-45

NOTE: This map was prepared for the use of the Washoe County Assessor for assessment and illustrative purposes only. It does not represent a survey of the premises. No liability is assumed as to the sufficiency or accuracy of the data delineated herein.



**PORTIONS OF SECTION 29 &
SECTION 32
T18N - R20E**