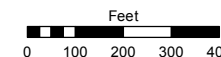
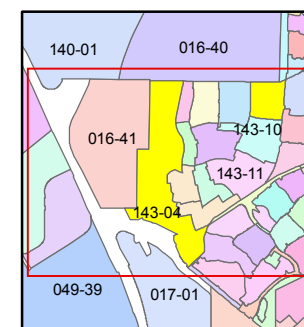
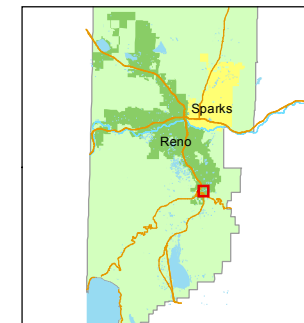


STATE OF NEVADA
WASHOE COUNTY
ASSESSOR'S OFFICE
Joshua G. Wilson, Assessor

1001 East Ninth Street
Building D
Reno, Nevada 89512
(775) 328-2231



1 inch = 400 feet



created by: NLH 4/06/2009

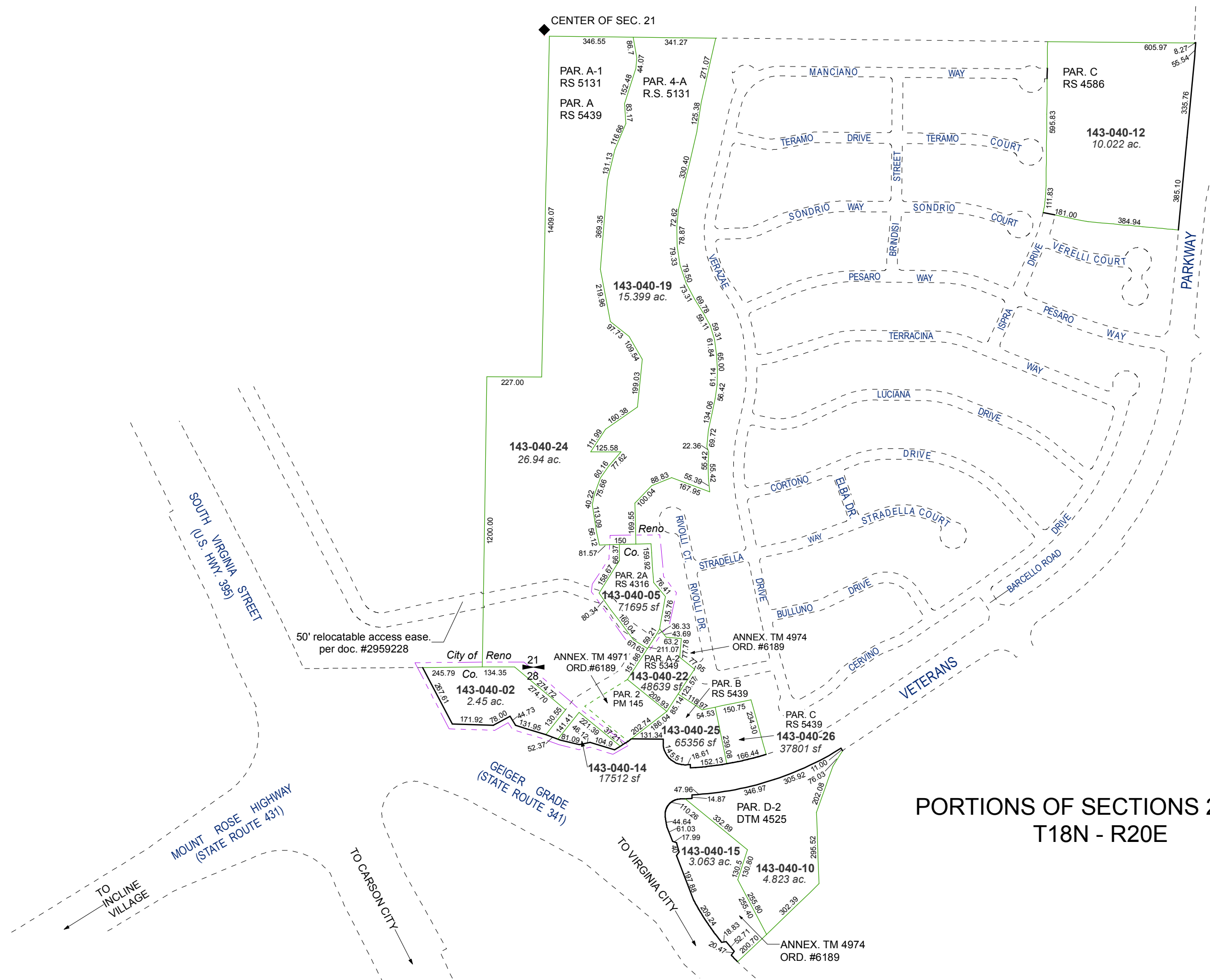
last updated: KSB 7/06/12

area previously shown on map(s)

016-42

NOTE: This map was prepared for the use of the Washoe County Assessor for assessment and illustrative purposes only. It does not represent a survey of the premises. No liability is assumed as to the sufficiency or accuracy of the data delineated hereon.

CENTER OF SEC. 21



PORTIONS OF SECTIONS 21 & 28
T18N - R20E

TO INCLINE VILLAGE

TO CARSON CITY

MOUNT ROSE HIGHWAY
(STATE ROUTE 431)

GEIGER GRADE
(STATE ROUTE 341)

SOUTH VIRGINIA STREET
(U.S. HWY. 395)

50' relocatable access easement
per doc. #2959228

City of Reno

ANNEX. TM 4971
ORD.#6189

ANNEX. TM 4974
ORD.#6189

ANNEX. TM 4974
ORD.#6189

ANNEX. TM 4974
ORD.#6189