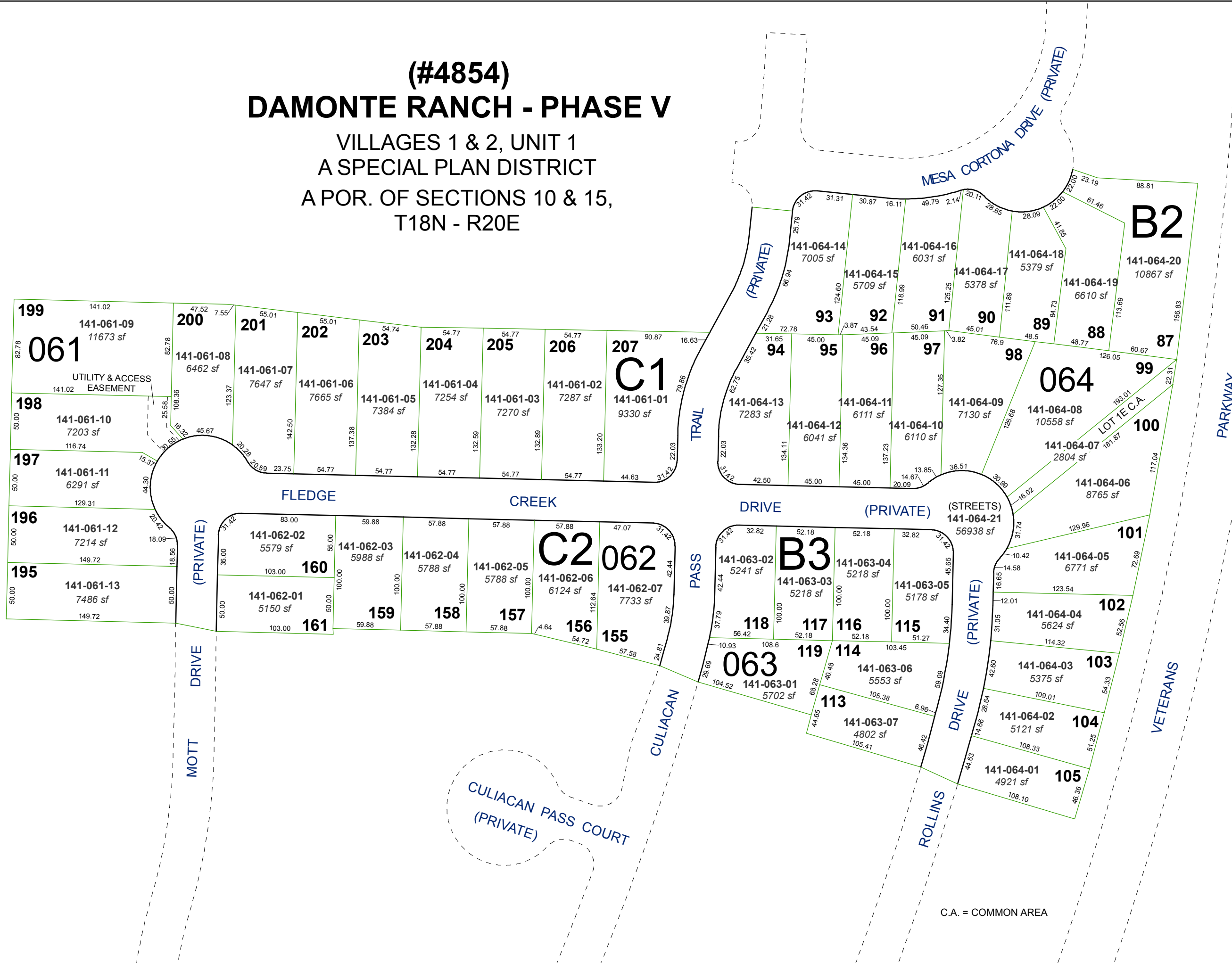


(#4854) DAMONTE RANCH - PHASE V

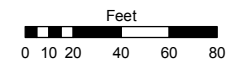
VILLAGES 1 & 2, UNIT 1
A SPECIAL PLAN DISTRICT
A POR. OF SECTIONS 10 & 15,
T18N - R20E



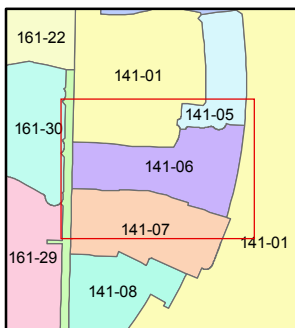
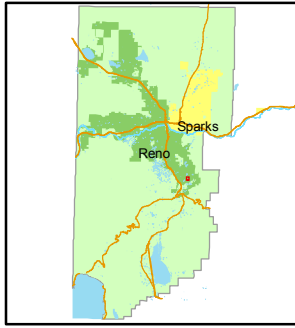
Assessor's Map Number
141-06

STATE OF NEVADA
WASHOE COUNTY
ASSESSOR'S OFFICE
Joshua G. Wilson, Assessor

1001 East Ninth Street
Building D
Reno, Nevada 89512
(775) 328-2231



1 inch = 80 feet



created by: NLH 3/11/2011
last updated: _____
area previously shown on map(s)
141-01

NOTE: This map was prepared for the use of the Washoe County Assessor for assessment and illustrative purposes only. It does not represent a survey of the premises. No liability is assumed as to the sufficiency or accuracy of the data delineated hereon.