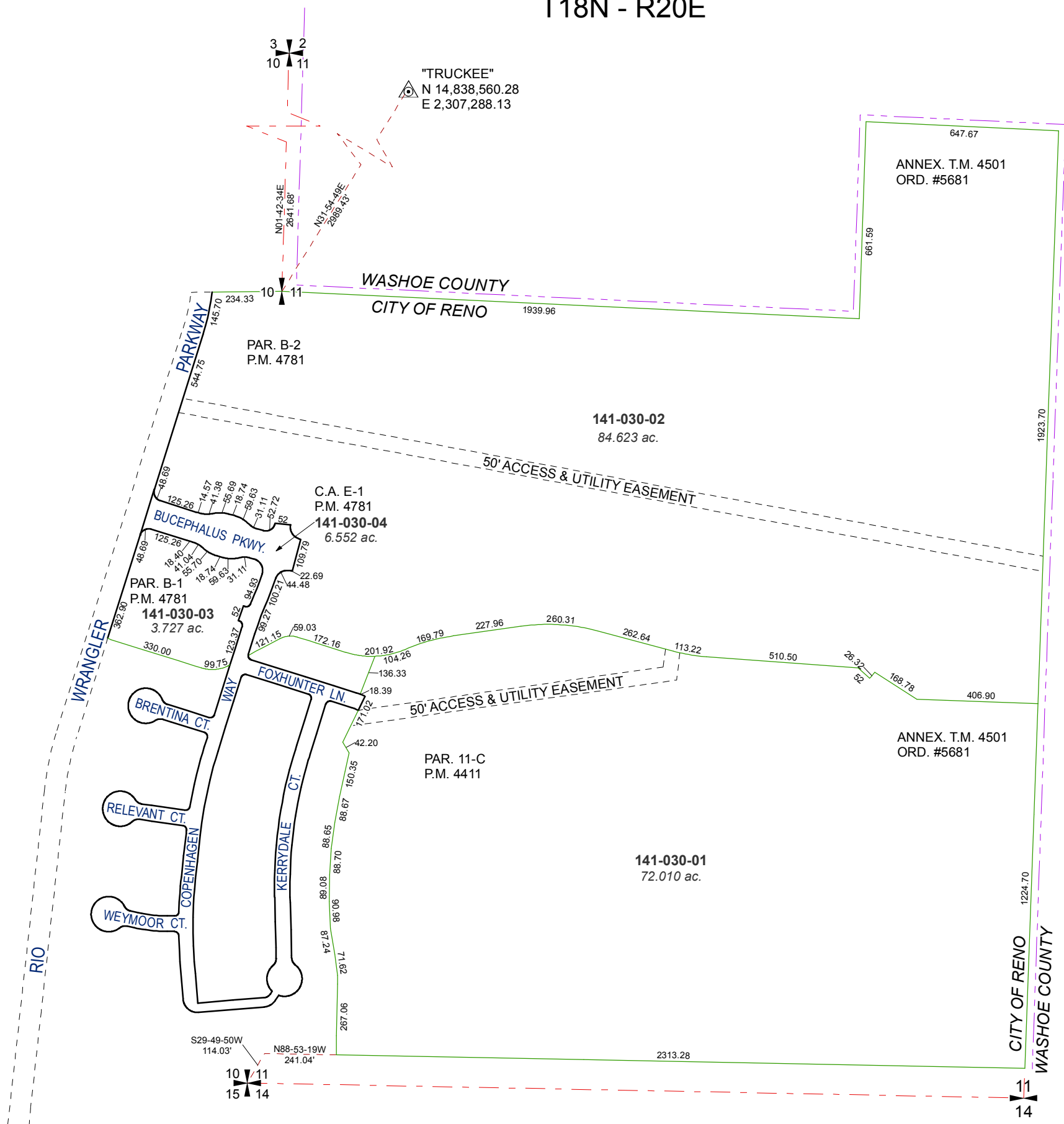


PORTIONS OF THE SE ¼ OF SEC. 10
AND THE W ½ OF SEC. 11
T18N - R20E

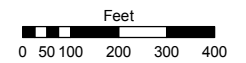


C.A. = COMMON AREA

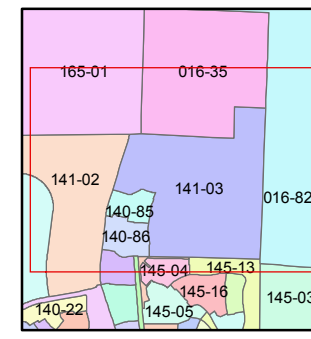
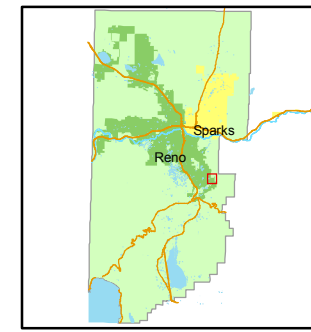
Assessor's Map Number
141-03

STATE OF NEVADA
WASHOE COUNTY
ASSESSOR'S OFFICE
Joshua G. Wilson, Assessor

1001 East Ninth Street
Building D
Reno, Nevada 89512
(775) 328-2231



1 inch = 400 feet



created by: NLH 12/03/2010

last updated: _____

area previously shown on map(s)
140-04

NOTE: This map was prepared for the use of the Washoe County Assessor for assessment and illustrative purposes only. It does not represent a survey of the premises. No liability is assumed as to the sufficiency or accuracy of the data delineated herein.