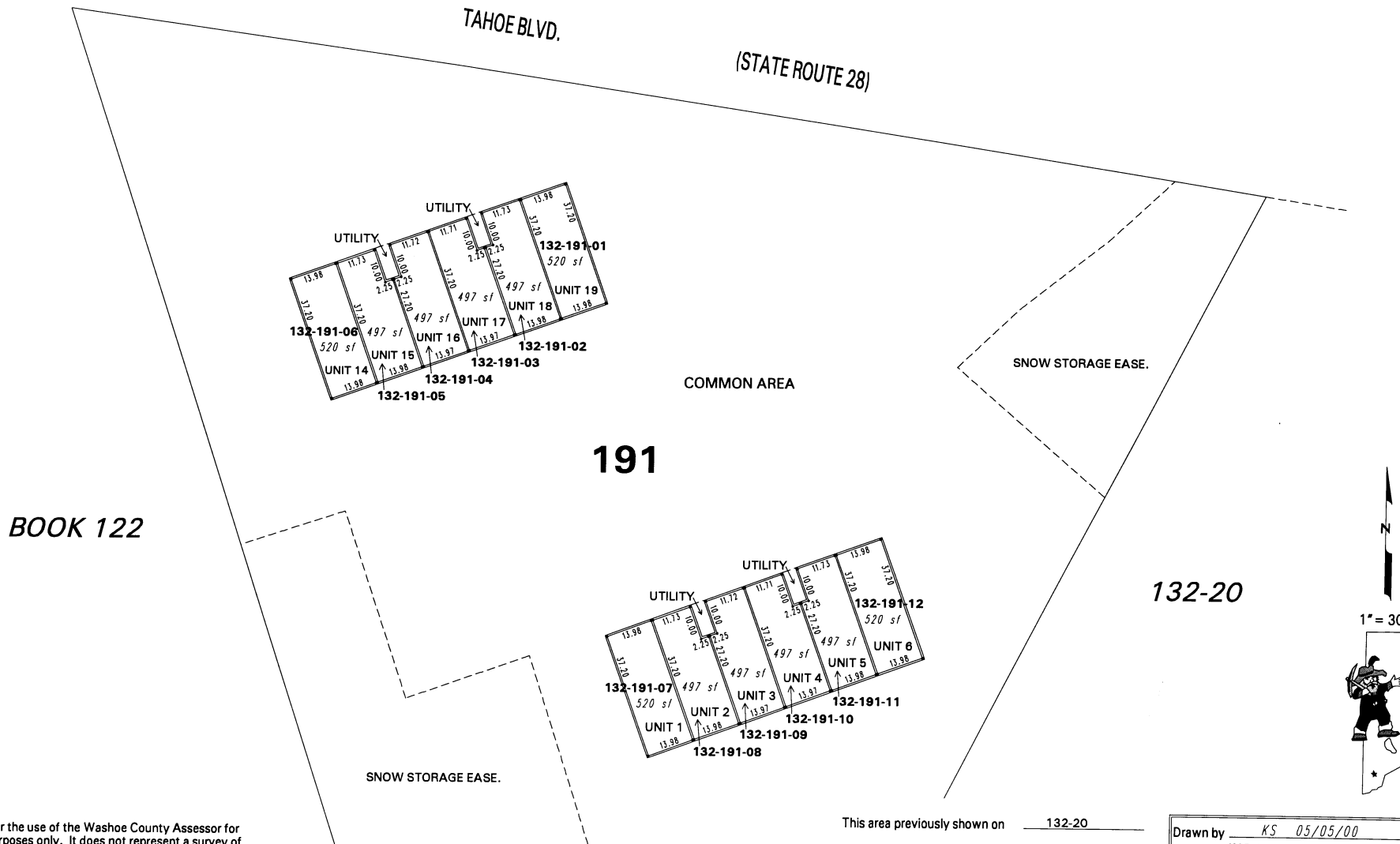


TOEPA - A CONDOMINIUM (#3822)
PORTION OF SE 1/4 OF SECTION 16, T16N - R18E

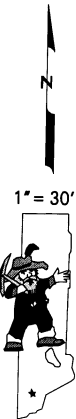
LOWER LEVEL UNITS
TO EACH A 1/24th INTEREST IN THE COMMON AREA



BOOK 122

191

132-20



NOTE: This map is prepared for the use of the Washoe County Assessor for assessment and illustrative purposes only. It does not represent a survey of the premises. No liability is assumed as to the sufficiency or the accuracy of the data delineated hereon.

Office of Washoe County Assessor, Nevada - Robert W. McGowan

This area previously shown on 132-20

NOTE: Areas of parcels which are less than 2 acres are shown in square feet.

Drawn by	KS 05/05/00
Revised	KSB 1/23/03