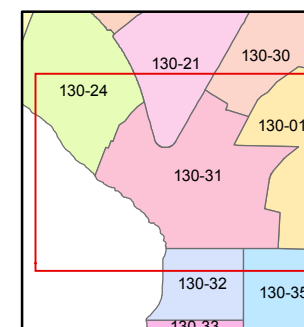
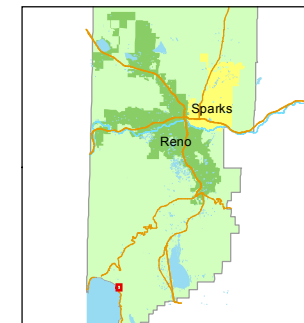


1 inch = 200 feet



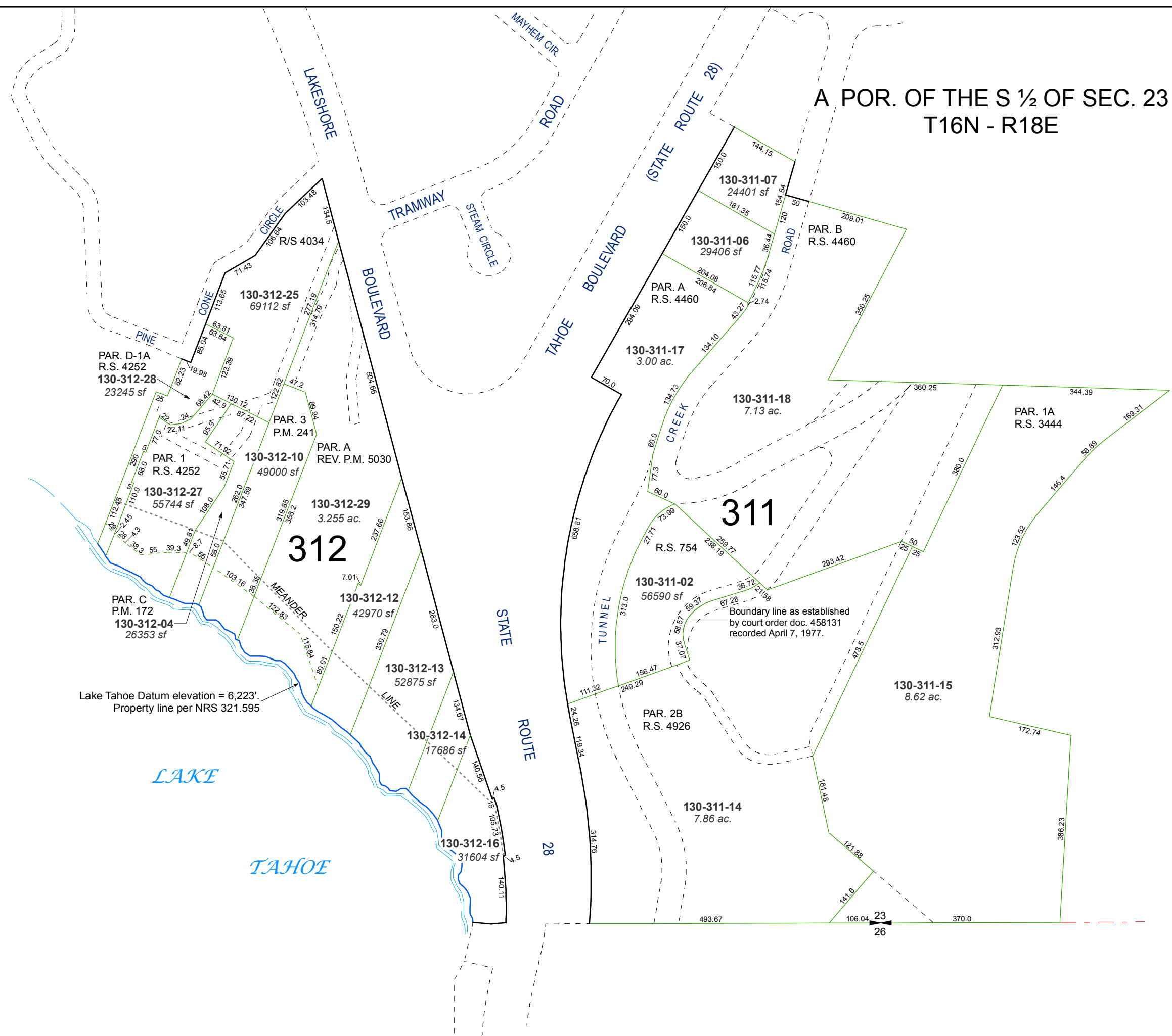
created by: NLH 6/29/2010

last updated: KSB 9/29/11

area previously shown on map(s)

NOTE: This map was prepared for the use of the Washoe County Assessor for assessment and illustrative purposes only. It does not represent a survey of the premises. No liability is assumed as to the sufficiency or accuracy of the data delineated hereon.

**A POR. OF THE S 1/2 OF SEC. 23  
T16N - R18E**



Lake Tahoe Datum elevation = 6,223'.  
Property line per NRS 321.595

Boundary line as established  
by court order doc. 458131  
recorded April 7, 1977.