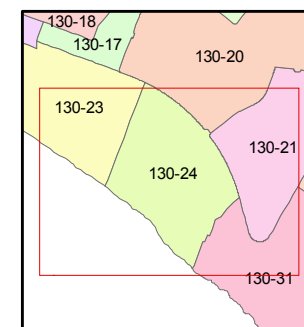
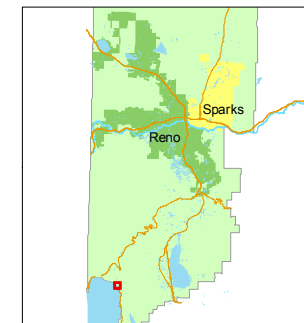


1 inch = 200 feet



created by: CFB 06/06/2011

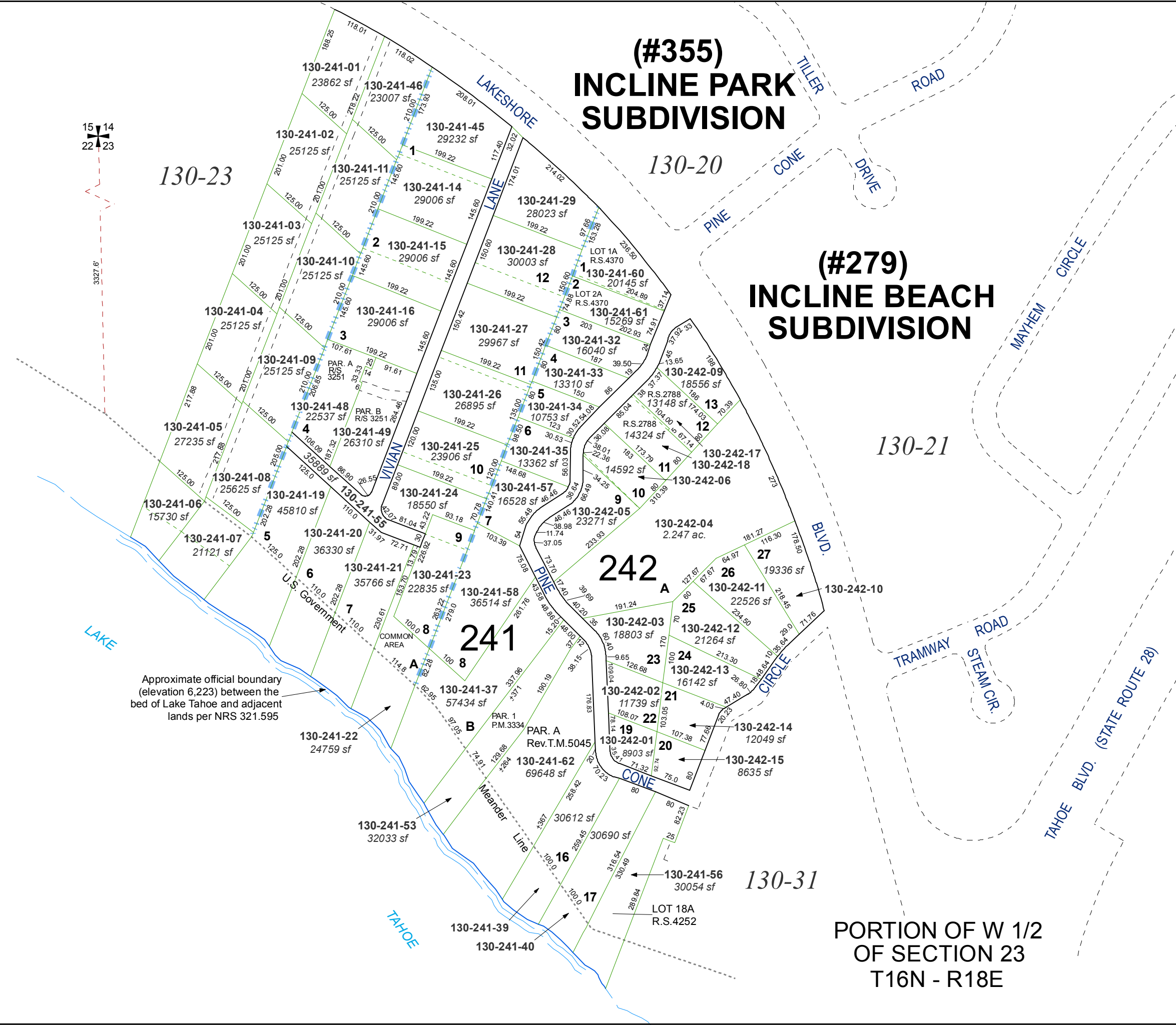
last updated:

area previously shown on map(s)

NOTE: This map was prepared for the use of the Washoe County Assessor for assessment and illustrative purposes only. It does not represent a survey of the premises. No liability is assumed as to the sufficiency or accuracy of the data delineated hereon.

(#355) INCLINE PARK SUBDIVISION

(#279) INCLINE BEACH SUBDIVISION



Approximate official boundary (elevation 6,223) between the bed of Lake Tahoe and adjacent lands per NRS 321.595

PORTION OF W 1/2
OF SECTION 23
T16N - R18E



3327.6'