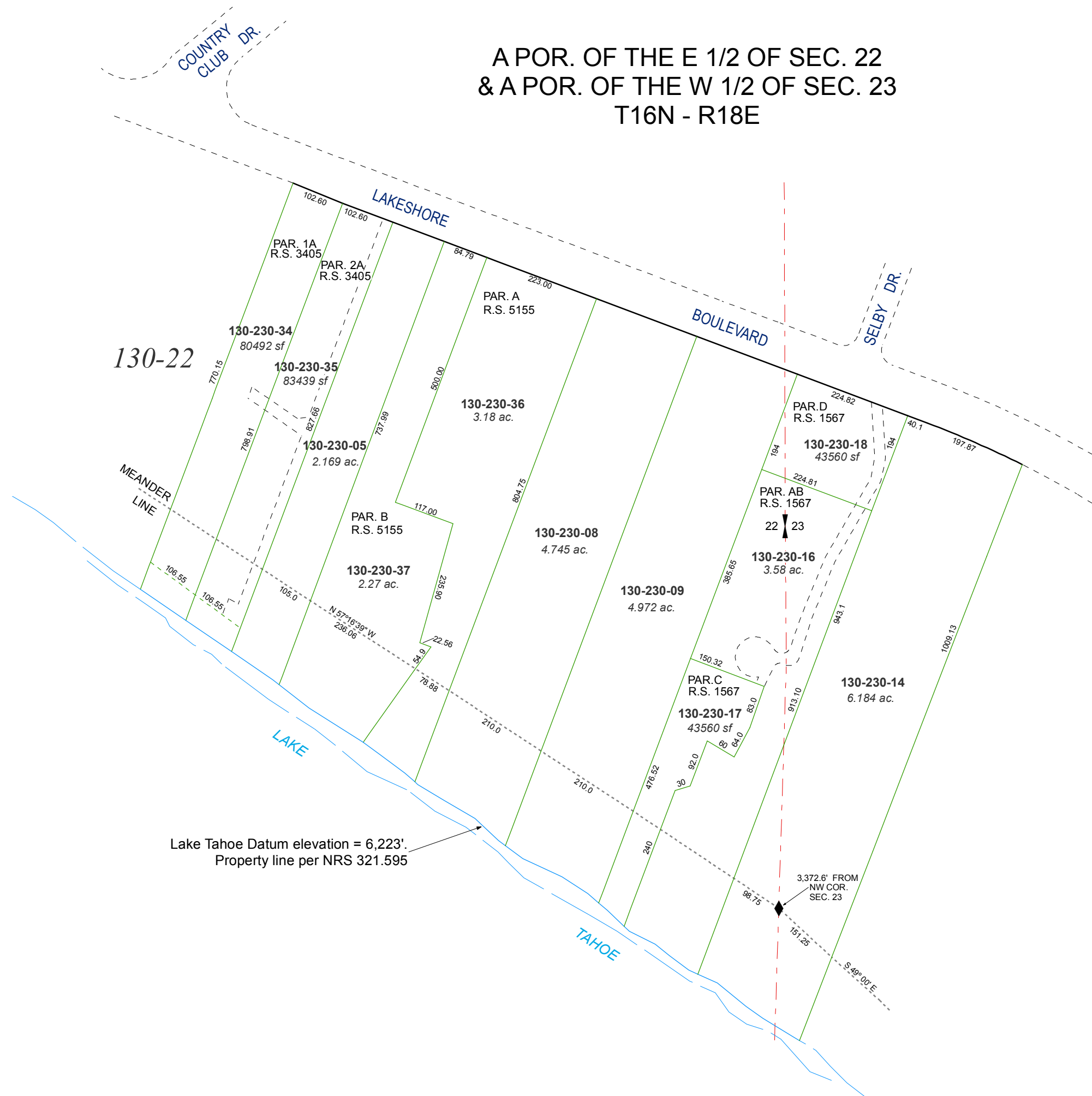


A POR. OF THE E 1/2 OF SEC. 22
& A POR. OF THE W 1/2 OF SEC. 23
T16N - R18E



Lake Tahoe Datum elevation = 6,223'.
Property line per NRS 321.595

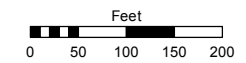
3,372.6' FROM
NW COR.
SEC. 23

Assessor's Map Number

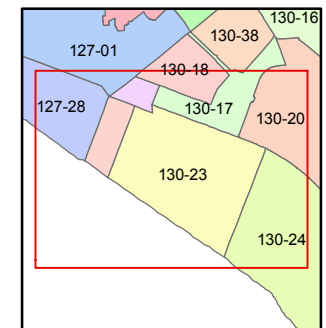
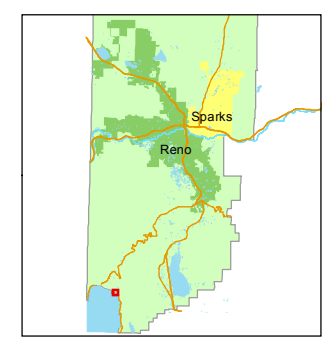
130-23

STATE OF NEVADA
WASHOE COUNTY
ASSESSOR'S OFFICE
Joshua G. Wilson, Assessor

1001 East Ninth Street
Building D
Reno, Nevada 89512
(775) 328-2231



1 inch = 200 feet



created by: NLH 5/11/2009

last updated: KSB 9/27/11

area previously shown on map(s)

NOTE: This map was prepared for the use of the Washoe County Assessor for assessment and illustrative purposes only. It does not represent a survey of the premises. No liability is assumed as to the sufficiency or accuracy of the data delineated hereon.