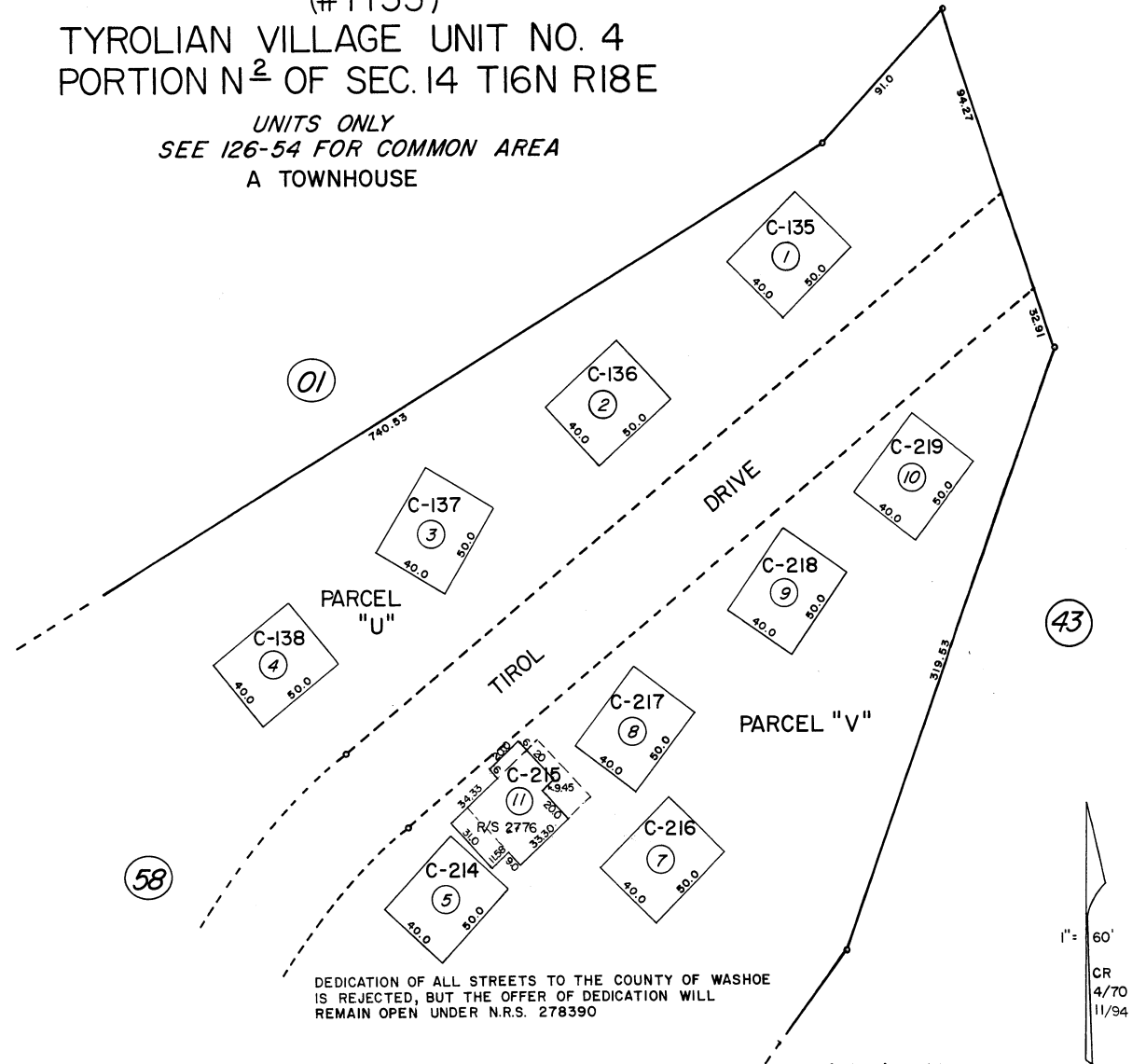


(#1155)  
TYROLIAN VILLAGE UNIT NO. 4  
PORTION N<sup>2</sup> OF SEC. 14 T16N R18E

UNITS ONLY  
SEE 126-54 FOR COMMON AREA  
A TOWNHOUSE



DEDICATION OF ALL STREETS TO THE COUNTY OF WASHOE IS REJECTED, BUT THE OFFER OF DEDICATION WILL REMAIN OPEN UNDER N.R.S. 278390

Assessor's Map County of Washoe, Nev.

NOTE - ASSESSOR'S BLOCK NUMBERS SHOWN IN ELLIPSES  
ASSESSOR'S PARCEL NUMBERS SHOWN IN CIRCLES

NOTE: This Map is prepared for the use of the Washoe County Assessor, for Assessment and Illustrative purposes only. It does not represent survey of the Premises. No Liability is assumed as to the sufficiency or accuracy of the Date delineated hereon.