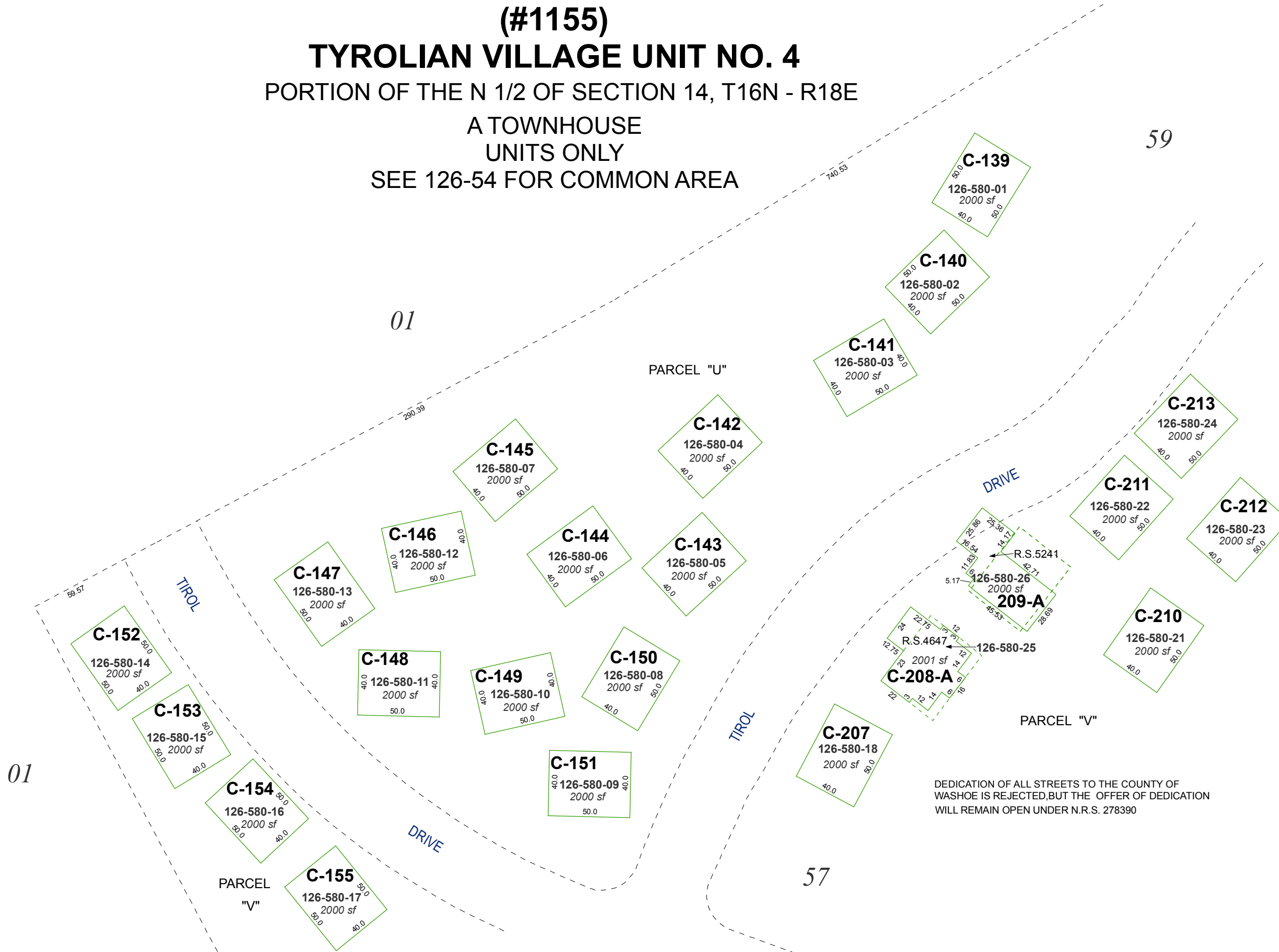


**(#1155)**  
**TYROLIAN VILLAGE UNIT NO. 4**  
 PORTION OF THE N 1/2 OF SECTION 14, T16N - R18E  
 A TOWNHOUSE  
 UNITS ONLY  
 SEE 126-54 FOR COMMON AREA

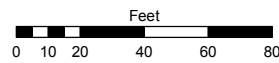


DEDICATION OF ALL STREETS TO THE COUNTY OF WASHOE IS REJECTED, BUT THE OFFER OF DEDICATION WILL REMAIN OPEN UNDER N.R.S. 278390

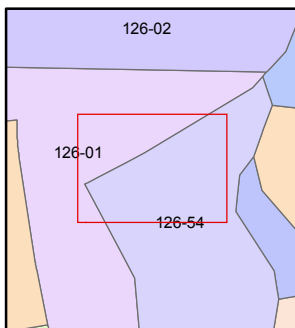
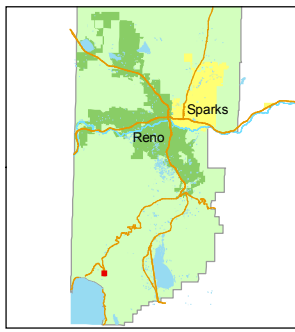
Assessor's Map Number  
**126-58**

STATE OF NEVADA  
**WASHOE COUNTY**  
**ASSESSOR'S OFFICE**  
 Joshua G. Wilson, Assessor

1001 East Ninth Street  
 Building D  
 Reno, Nevada 89512  
 (775) 328-2231



1 inch = 60 feet



created by: CFB 06/23/2010

last updated: \_\_\_\_\_

area previously shown on map(s) \_\_\_\_\_

NOTE: This map was prepared for the use of the Washoe County Assessor for assessment and illustrative purposes only. It does not represent a survey of the premises. No liability is assumed as to the sufficiency or accuracy of the data delineated hereon.