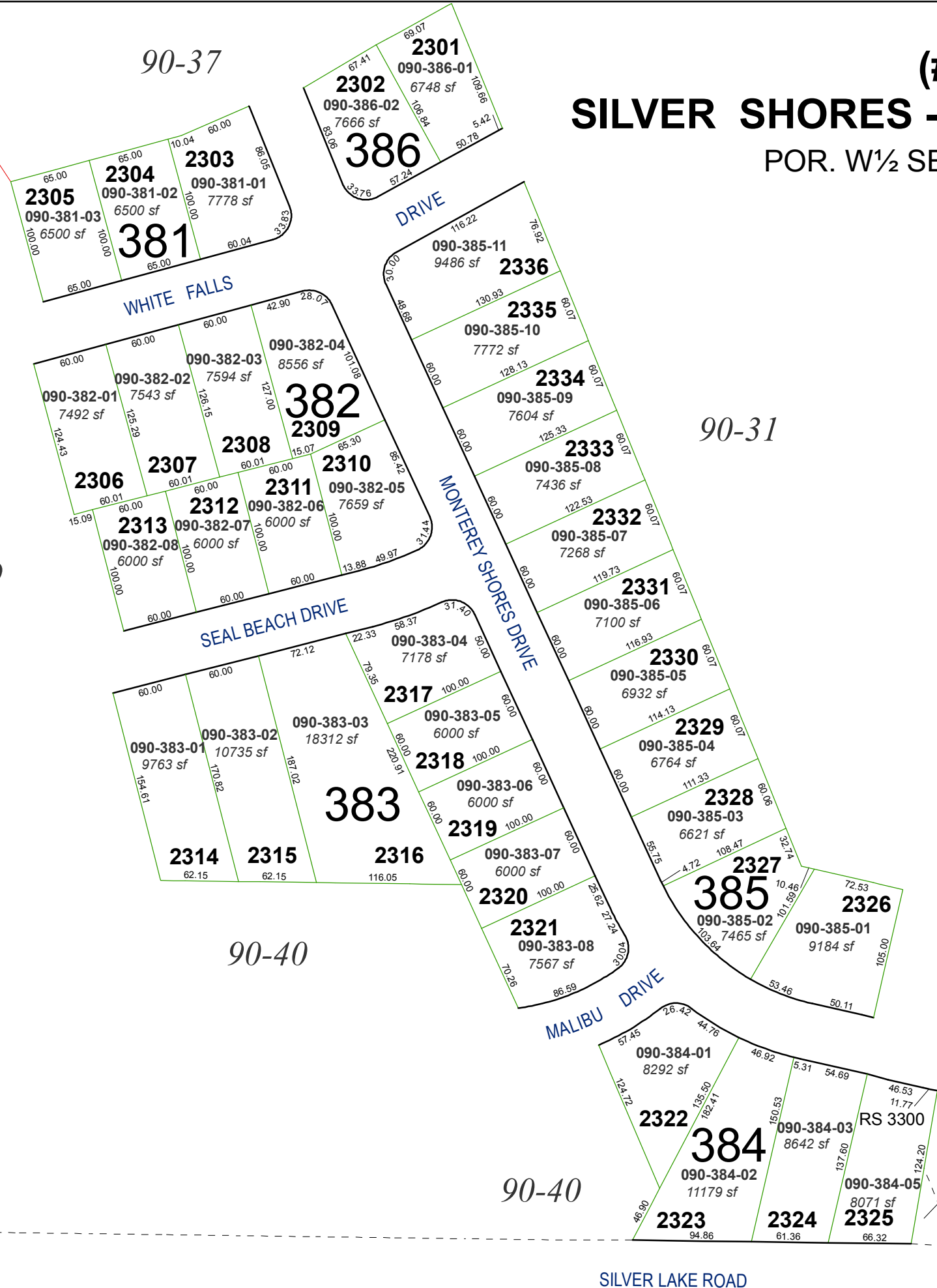


N33°33'10"W 2541.14



# (#3323) SILVER SHORES - UNIT TWENTY -THREE POR. W 1/2 SEC. 1, T20N - R18E

Assessor's Map Number  
**090-38**

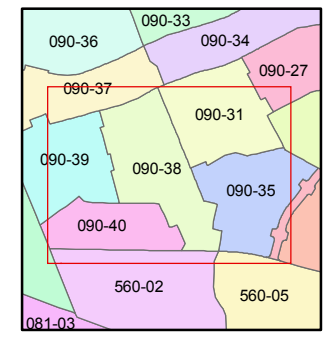
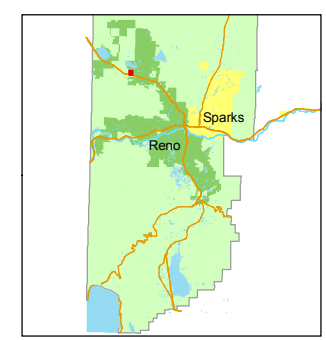
STATE OF NEVADA  
**WASHOE COUNTY**  
ASSESSOR'S OFFICE  
Joshua G. Wilson, Assessor

1001 East Ninth Street  
Building D  
Reno, Nevada 89512  
(775) 328-2231



Feet  
0 12.525 50 75 100

1 inch = 100 feet



created by: CFB 01/14/2011

last updated: \_\_\_\_\_

area previously shown on map(s) \_\_\_\_\_

PORTION LOT 2325  
ADDED TO LOT 1927, SILVER SHORES  
UNIT NINETEEN

NOTE: This map was prepared for the use of the Washoe County Assessor for assessment and illustrative purposes only. It does not represent a survey of the premises. No liability is assumed as to the sufficiency or accuracy of the data delineated hereon.