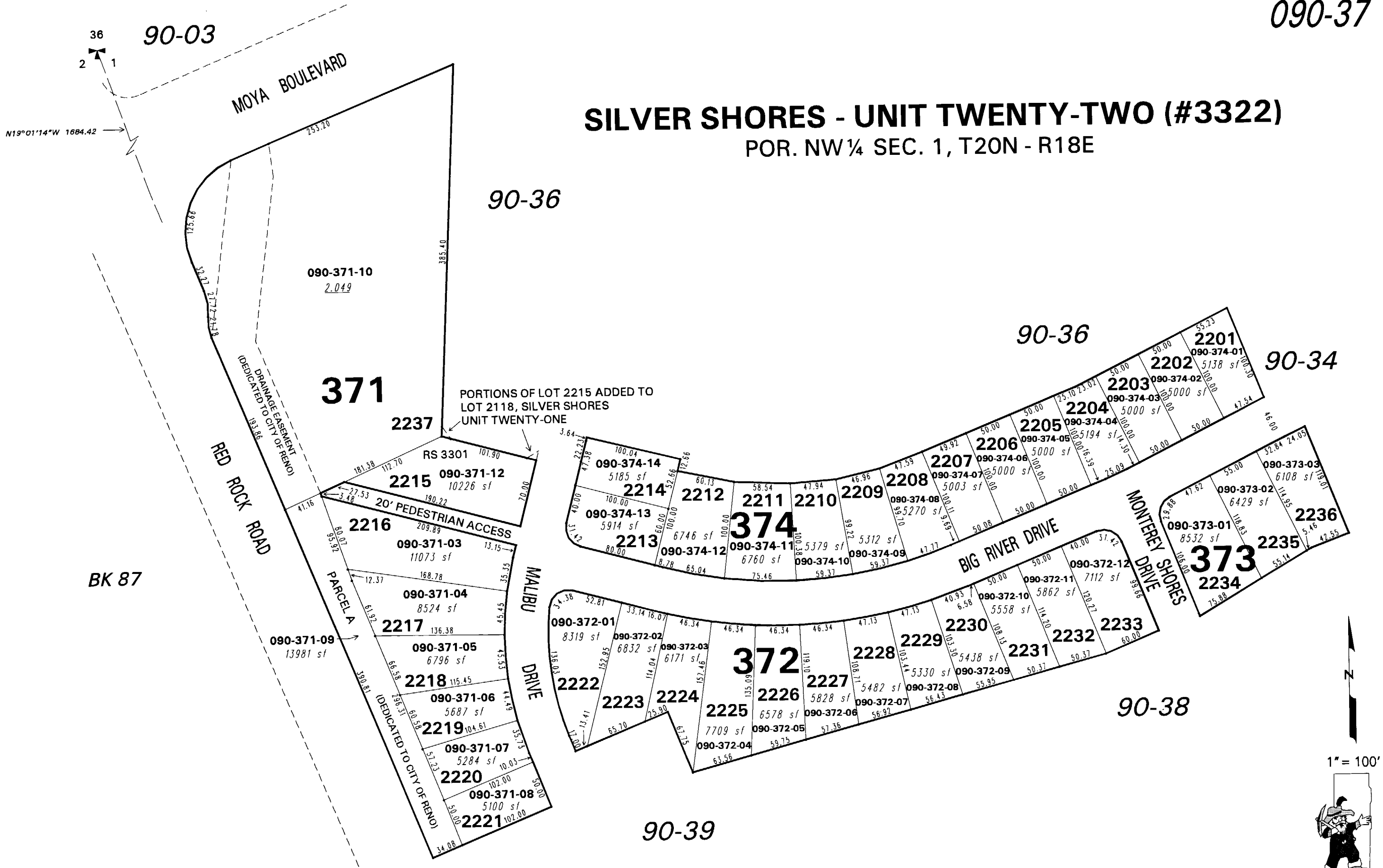


SILVER SHORES - UNIT TWENTY-TWO (#3322)

POR. NW 1/4 SEC. 1, T20N - R18E



NOTE: This map is prepared for the use of the Washoe County Assessor for assessment and illustrative purposes only. It does not represent a survey of the premises. No liability is assumed as to the sufficiency or the accuracy of the data delineated hereon.

Office of Washoe County Assessor, Nevada - Robert W. McGowan

This area previously shown on _____ Page 26

NOTE: Areas of parcels which are less than 2 acres are shown in square feet.

Drawn by GZ 12/9/96
 Revised 12/96 CFB 9/23/97 DSR 5/26/98
 TWT 2/14/01, 4/27/01 CFB 8/3/2004