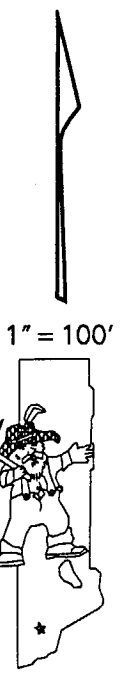
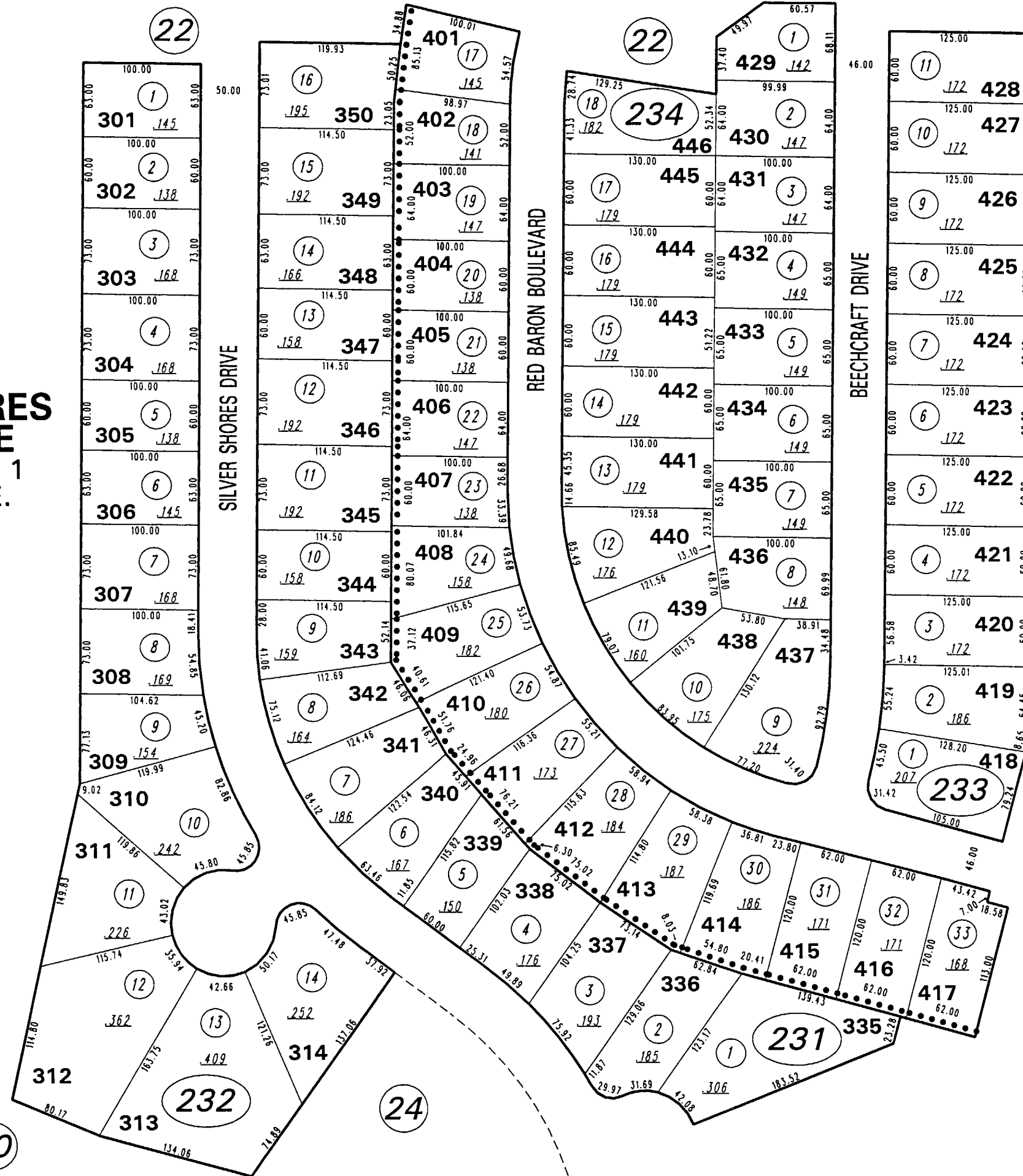


**(#2836)
SILVER SHORES
UNIT THREE
POR. E. 1/2 SEC. 1
T. 20 N. - R. 18 E.**

**(#2862)
SILVER SHORES
UNIT FOUR**



NOTE: This map is prepared for the use of the Washoe County Assessor for assessment and illustrative purposes only. It does not represent a survey of the premises. No liability is assumed as to the sufficiency or the accuracy of the data delineated hereon.

Office of Washoe County Assessor, Nevada - Robert W. McGowan

NOTE:
ASSESSOR'S BLOCK NUMBERS SHOWN IN ELLIPSES
ASSESSOR'S PARCEL NUMBERS SHOWN IN CIRCLES

Drawn by GS 04/13/92
Revised 9/93 5/94 9/95