

PORTION OF THE N 1/2 OF SECTION 1 &
 PORTION OF THE NE 1/4 OF SECTION 2
 T20N - R18E

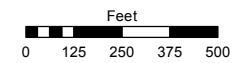
PORTION OF THE SW 1/4 OF SECTION 31
 T21N - R18E

PORTION OF THE NW 1/4 OF SECTION 6
 T21N - R19E

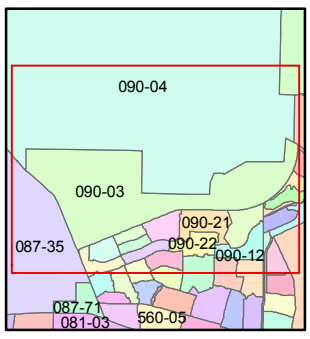
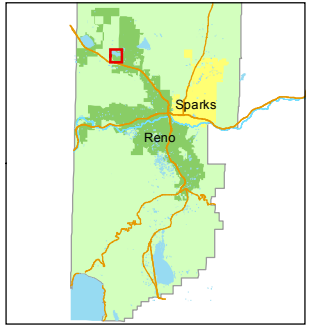
Assessor's Map Number
090-03

STATE OF NEVADA
WASHOE COUNTY
 ASSESSOR'S OFFICE
 Joshua G. Wilson, Assessor

1001 East Ninth Street
 Building D
 Reno, Nevada 89512
 (775) 328-2231



1 inch = 500 feet

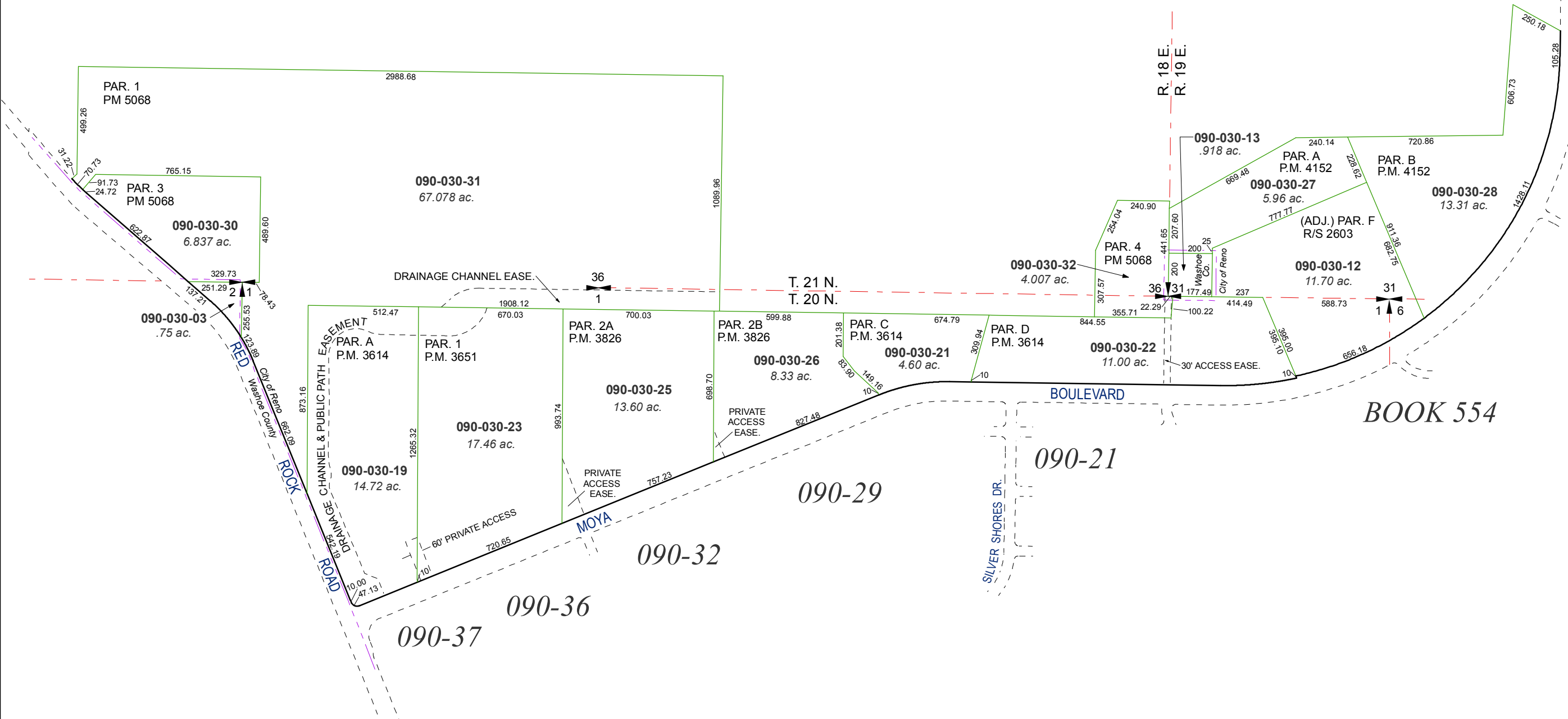


created by: CFB 03/24/2011

last updated: KSB 5/25/12

area previously shown on map(s)

NOTE: This map was prepared for the use of the Washoe County Assessor for assessment and illustrative purposes only. It does not represent a survey of the premises. No liability is assumed as to the sufficiency or accuracy of the data delineated hereon.



BOOK 554