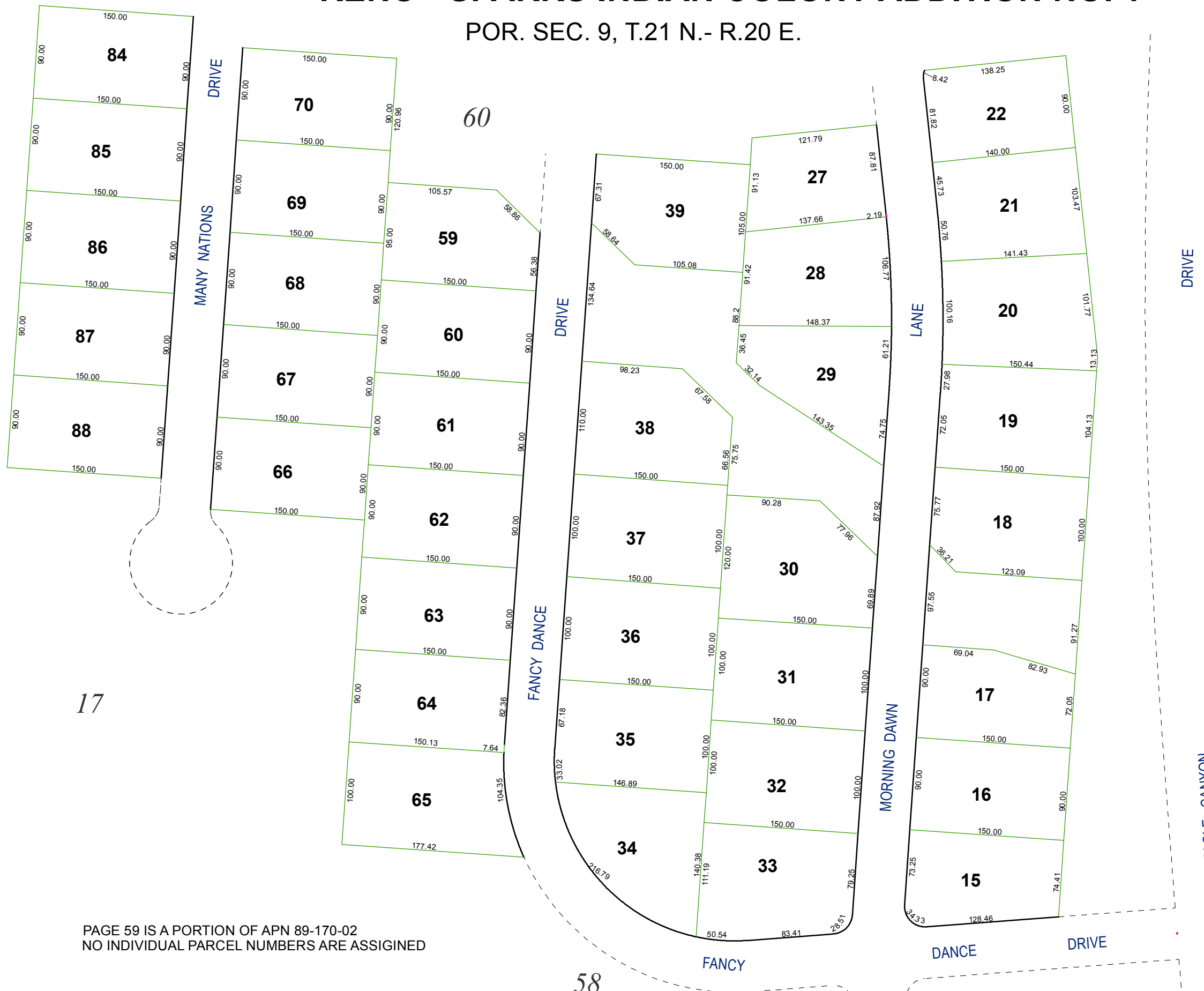


RENO - SPARKS INDIAN COLONY ADDITION NO. 1

POR. SEC. 9, T.21 N.- R.20 E.



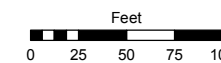
PAGE 59 IS A PORTION OF APN 89-170-02
NO INDIVIDUAL PARCEL NUMBERS ARE ASSIGNED

Assessor's Map Number

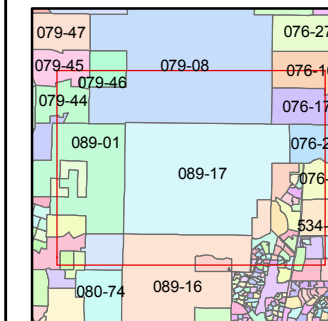
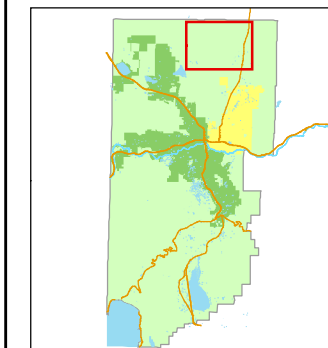
089-59

STATE OF NEVADA
WASHOE COUNTY
ASSESSOR'S OFFICE
Joshua G. Wilson, Assessor

1001 East Ninth Street
Building D
Reno, Nevada 89512
(775) 328-2231



1 inch = 100 feet



created by: CFB 02/01/2012

last updated: _____

area previously shown on map(s)

NOTE: This map was prepared for the use of the Washoe County Assessor for assessment and illustrative purposes only. It does not represent a survey of the premises. No liability is assumed as to the sufficiency or accuracy of the data delineated hereon.