

**(#3051)  
SPANISH SPRINGS VILLAGE  
UNIT 5**

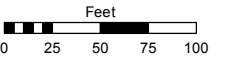
POR. OF NORTH 1/2 OF SEC. 34, T21N - R20E

Assessor's Map Number

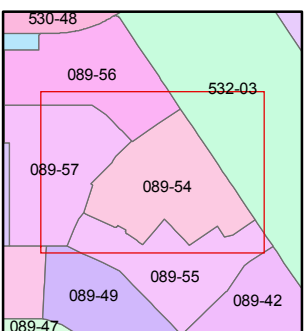
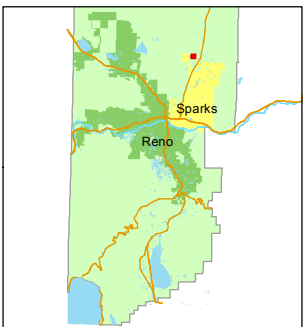
**089-54**

STATE OF NEVADA  
**WASHOE COUNTY**  
ASSESSOR'S OFFICE  
Joshua G. Wilson, Assessor

1001 East Ninth Street  
Building D  
Reno, Nevada 89512  
(775) 328-2231



1 inch = 100 feet



created by: TWT 1/4/2012

last updated: \_\_\_\_\_

area previously shown on map(s)  
089-15

NOTE: This map was prepared for the use of the Washoe County Assessor for assessment and illustrative purposes only. It does not represent a survey of the premises. No liability is assumed as to the sufficiency or accuracy of the data delineated hereon.

