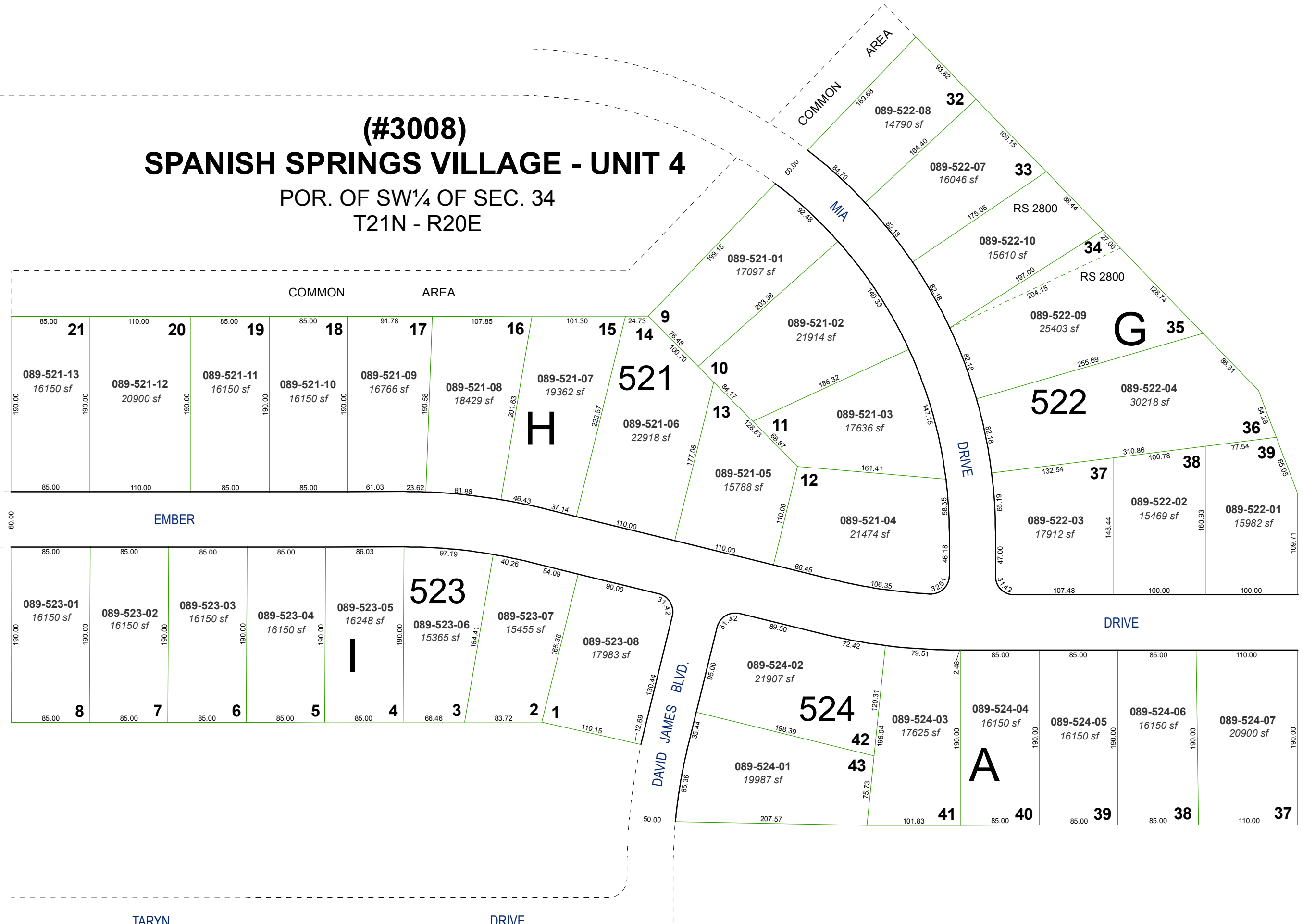


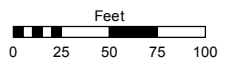
(#3008)
SPANISH SPRINGS VILLAGE - UNIT 4
 POR. OF SW¼ OF SEC. 34
 T21N - R20E



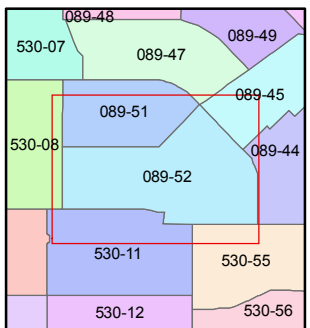
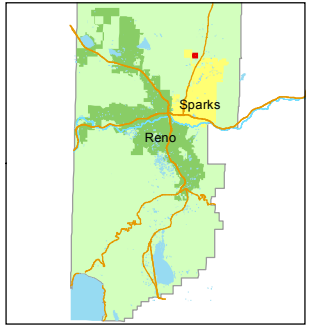
Assessor's Map Number
089-52

STATE OF NEVADA
WASHOE COUNTY
 ASSESSOR'S OFFICE
 Joshua G. Wilson, Assessor

1001 East Ninth Street
 Building D
 Reno, Nevada 89512
 (775) 328-2231



1 inch = 100 feet



created by: TWT 1/6/2012

last updated: _____

area previously shown on map(s)
 089-15

NOTE: This map was prepared for the use of the Washoe County Assessor for assessment and illustrative purposes only. It does not represent a survey of the premises. No liability is assumed as to the sufficiency or accuracy of the data delineated hereon.