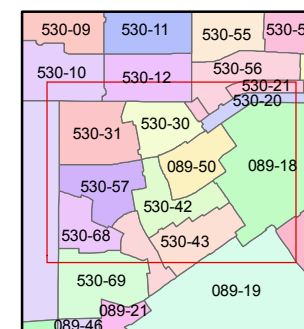
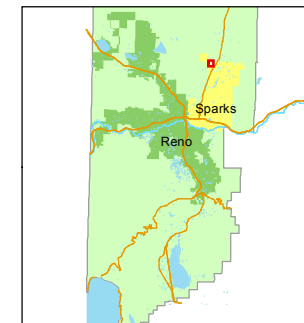


1 inch = 200 feet



created by: TWT 1/12/2012

last updated: _____

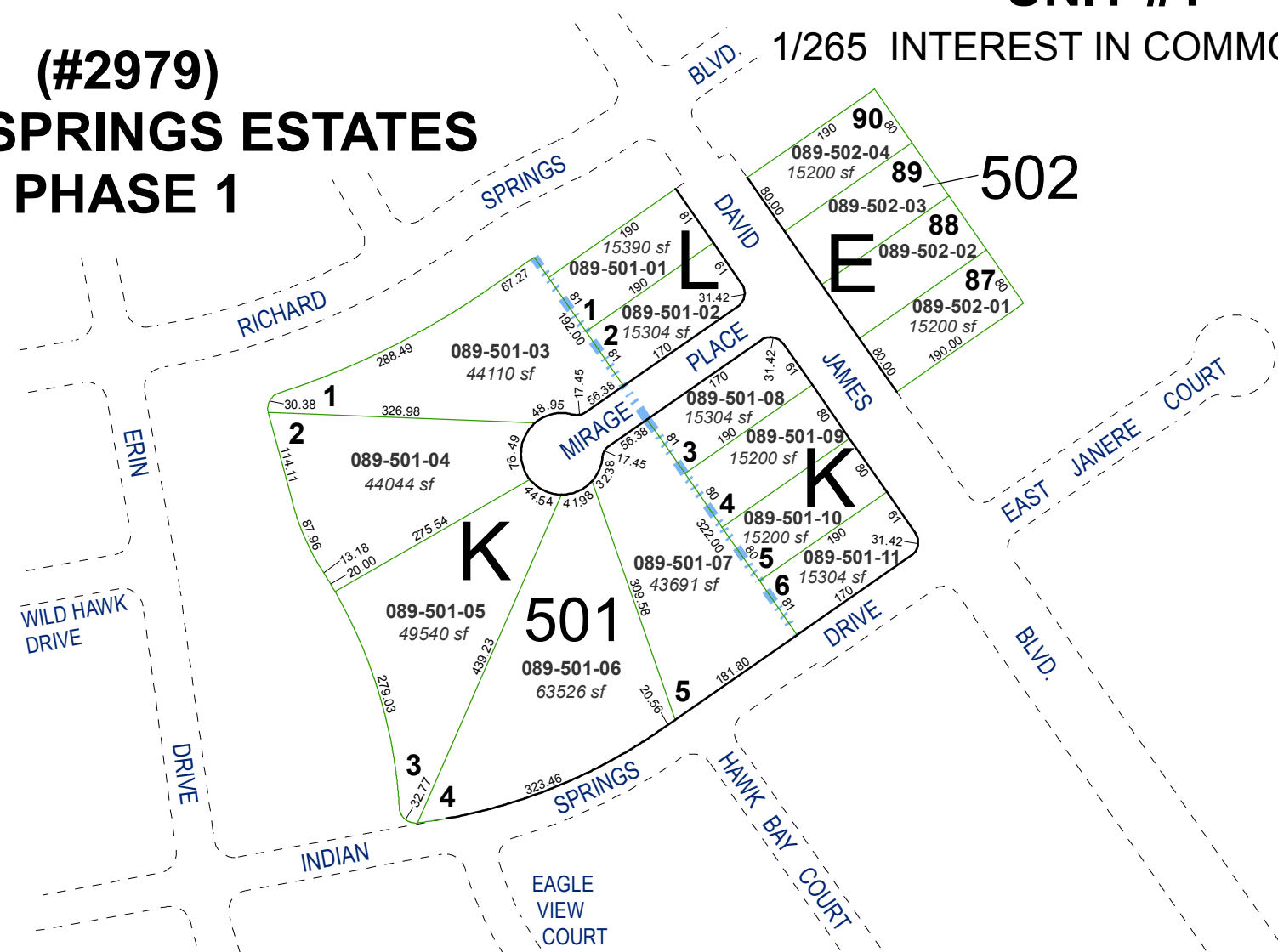
area previously shown on map(s)

NOTE: This map was prepared for the use of the Washoe County Assessor for assessment and illustrative purposes only. It does not represent a survey of the premises. No liability is assumed as to the sufficiency or accuracy of the data delineated hereon.

(#1801) DESERT SPRINGS UNIT #1

1/265 INTEREST IN COMMON AREA

(#2979) NORTH SPRINGS ESTATES PHASE 1



PORTION OF NW 1/4 OF SECTION 3
T20N - R20E