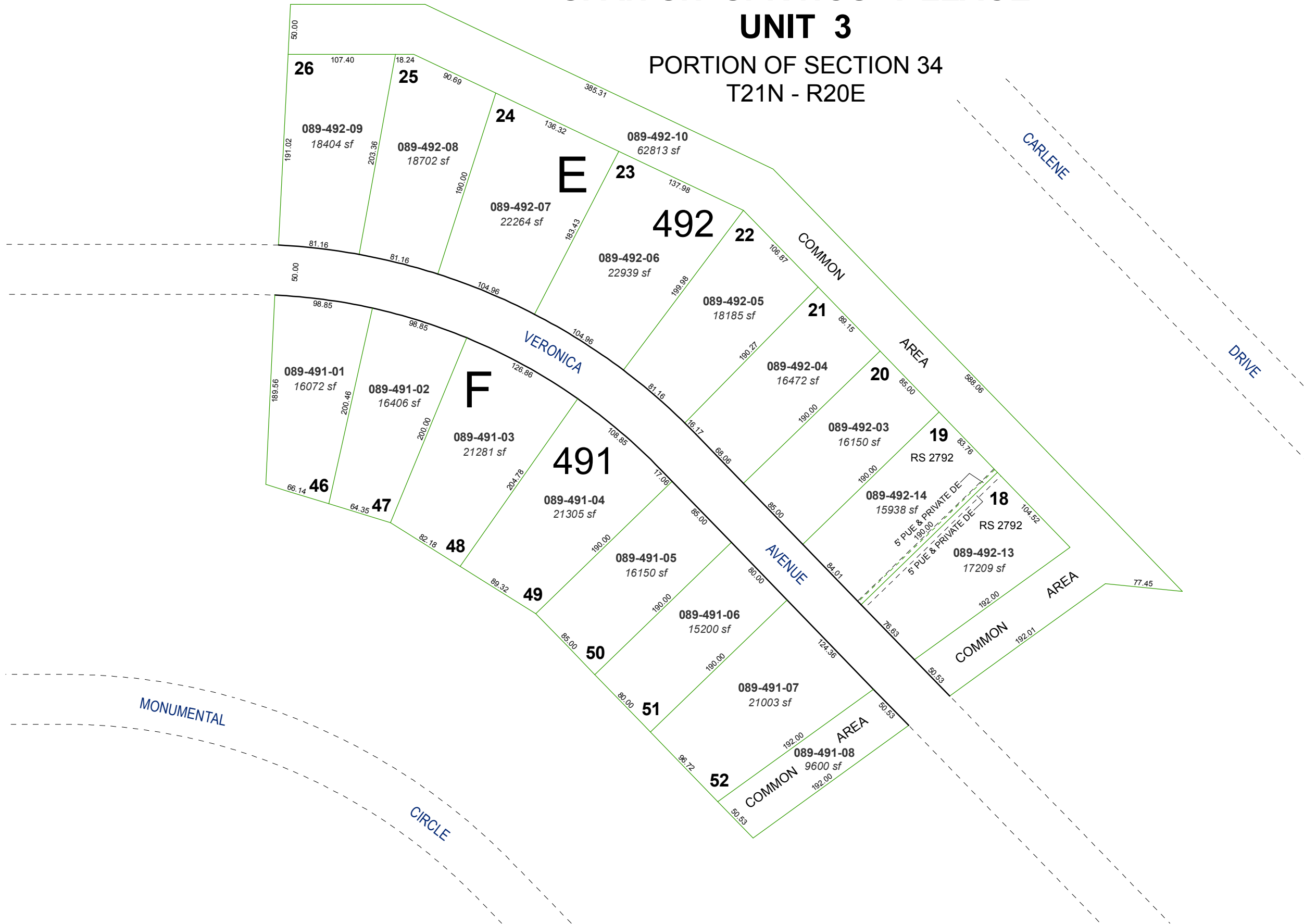


# (#2970) SPANISH SPRINGS VILLAGE UNIT 3

PORTION OF SECTION 34  
T21N - R20E

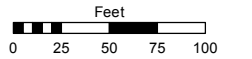


Assessor's Map Number

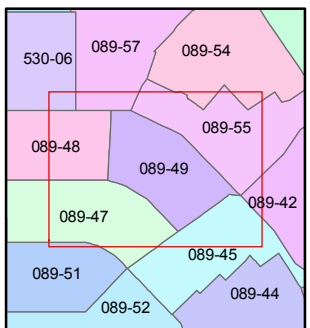
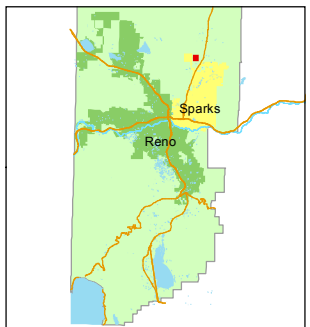
**089-49**

STATE OF NEVADA  
**WASHOE COUNTY**  
ASSESSOR'S OFFICE  
Joshua G. Wilson, Assessor

1001 East Ninth Street  
Building D  
Reno, Nevada 89512  
(775) 328-2231



1 inch = 100 feet



created by: TWT 1/5/2012

last updated: \_\_\_\_\_

area previously shown on map(s)

089-15

NOTE: This map was prepared for the use of the Washoe County Assessor for assessment and illustrative purposes only. It does not represent a survey of the premises. No liability is assumed as to the sufficiency or accuracy of the data delineated hereon.