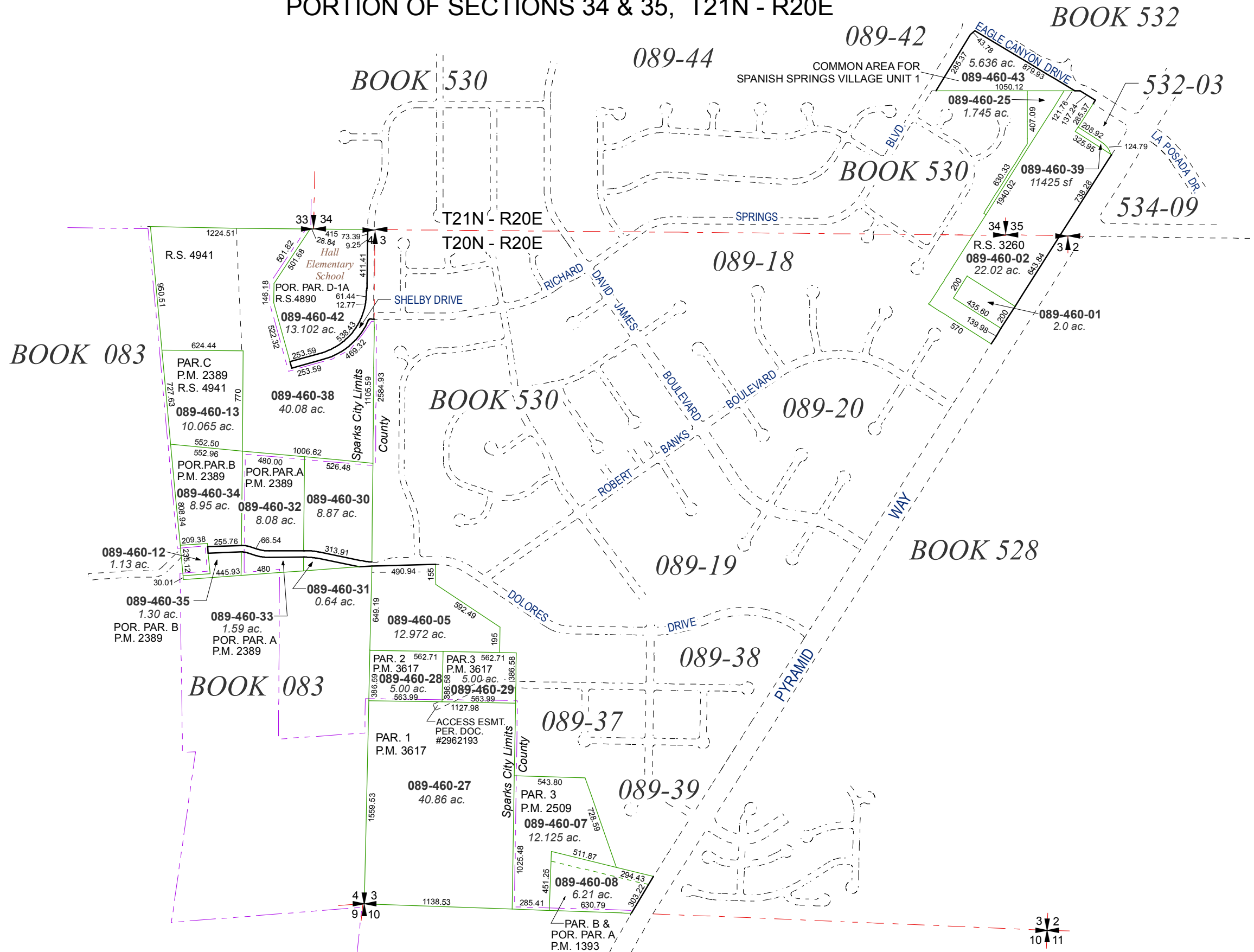


PORTION OF SECTIONS 3 & 4, T20N - R20E  
 PORTION OF SECTIONS 34 & 35, T21N - R20E

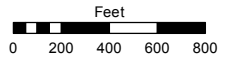


Assessor's Map Number

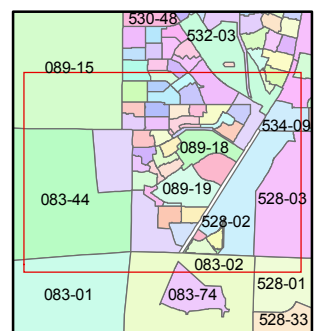
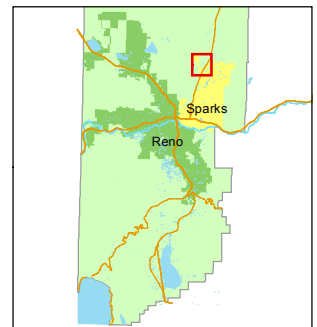
**089-46**

STATE OF NEVADA  
**WASHOE COUNTY**  
 ASSESSOR'S OFFICE  
 Joshua G. Wilson, Assessor

1001 East Ninth Street  
 Building D  
 Reno, Nevada 89512  
 (775) 328-2231



1 inch = 800 feet



created by: TWT 11/9/2009

last updated: TWT 1/9/2012

area previously shown on map(s)  
 089-15

NOTE: This map was prepared for the use of the Washoe County Assessor for assessment and illustrative purposes only. It does not represent a survey of the premises. No liability is assumed as to the sufficiency or accuracy of the data delineated hereon.