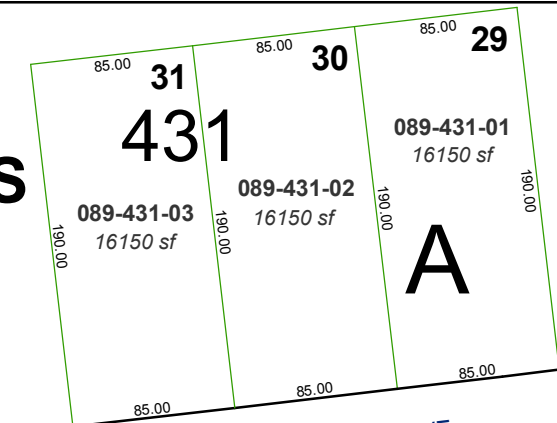
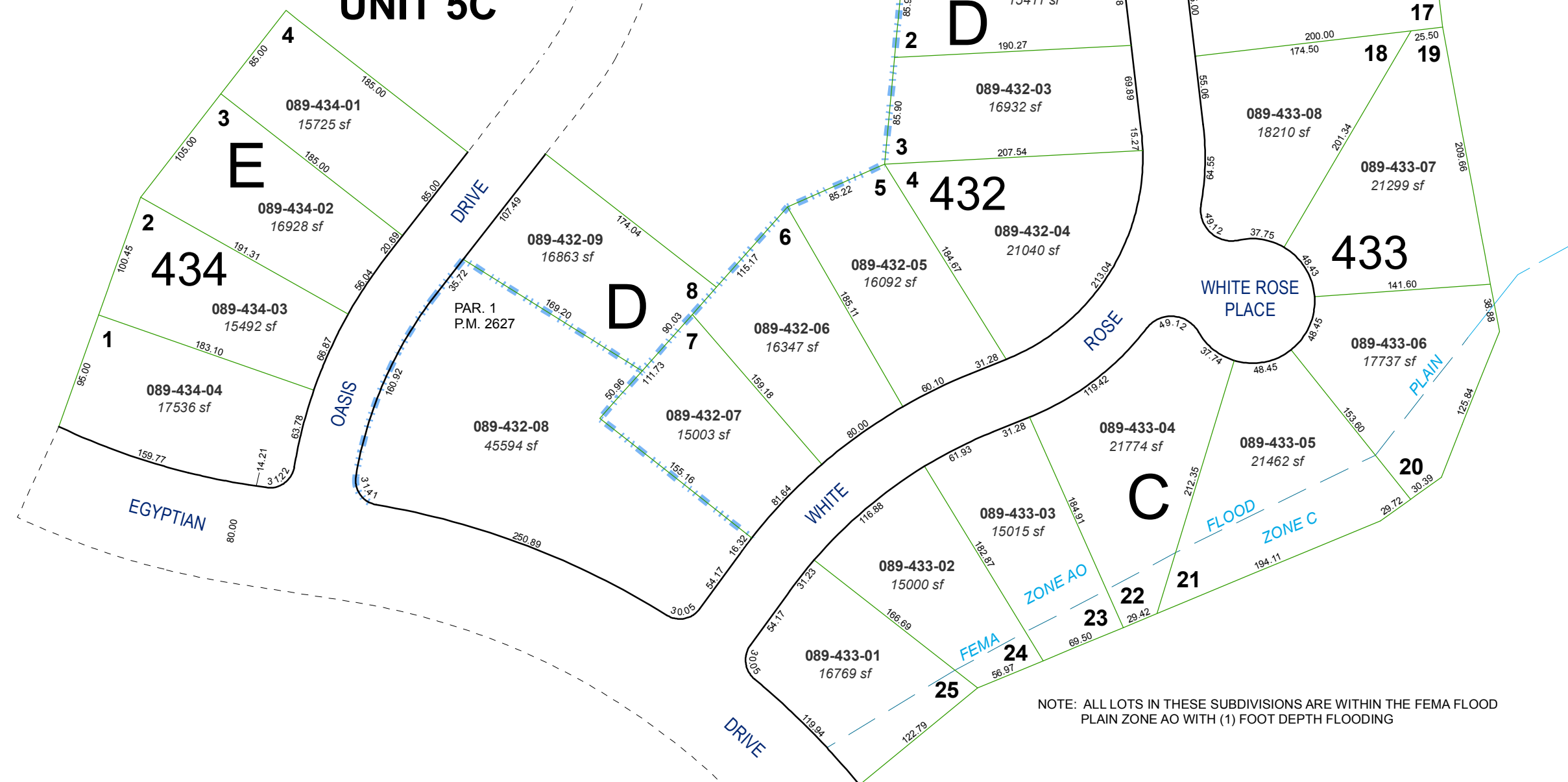


**(#2864)
PYRAMID RANCH ESTATES
UNIT 5B**

POR. OF SW 1/4 OF SEC. 26
T21N - R20E



**(#2939)
PYRAMID RANCH ESTATES
UNIT 5C**

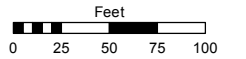


Assessor's Map Number

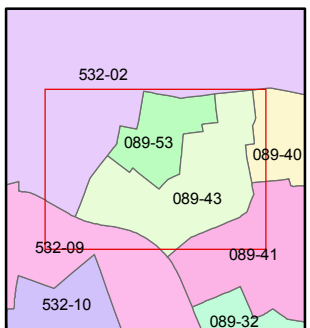
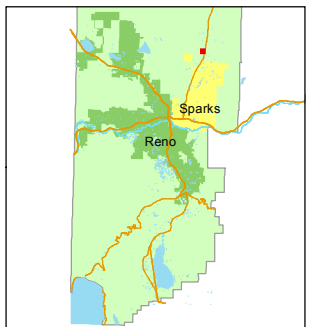
089-43

STATE OF NEVADA
WASHOE COUNTY
ASSESSOR'S OFFICE
Joshua G. Wilson, Assessor

1001 East Ninth Street
Building D
Reno, Nevada 89512
(775) 328-2231



1 inch = 100 feet



created by: TWT 12/2/2011

last updated:

area previously shown on map(s)

089-16

NOTE: This map was prepared for the use of the Washoe County Assessor for assessment and illustrative purposes only. It does not represent a survey of the premises. No liability is assumed as to the sufficiency or accuracy of the data delineated hereon.