

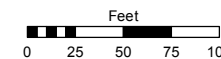
POR. OF NW 1/4 OF SEC. 35  
T21N - R20E

# (#2499) PYRAMID RANCH ESTATES UNIT 4B

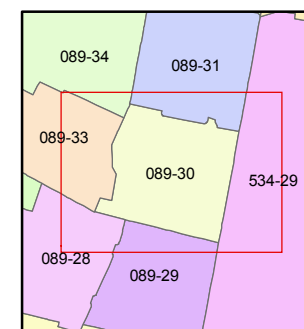
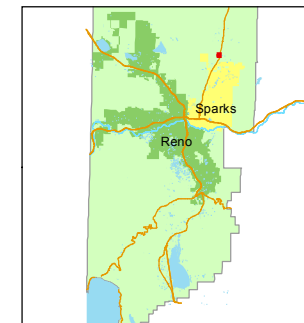
Assessor's Map Number  
**089-30**

STATE OF NEVADA  
**WASHOE COUNTY**  
ASSESSOR'S OFFICE  
Joshua G. Wilson, Assessor

1001 East Ninth Street  
Building D  
Reno, Nevada 89512  
(775) 328-2231



1 inch = 100 feet

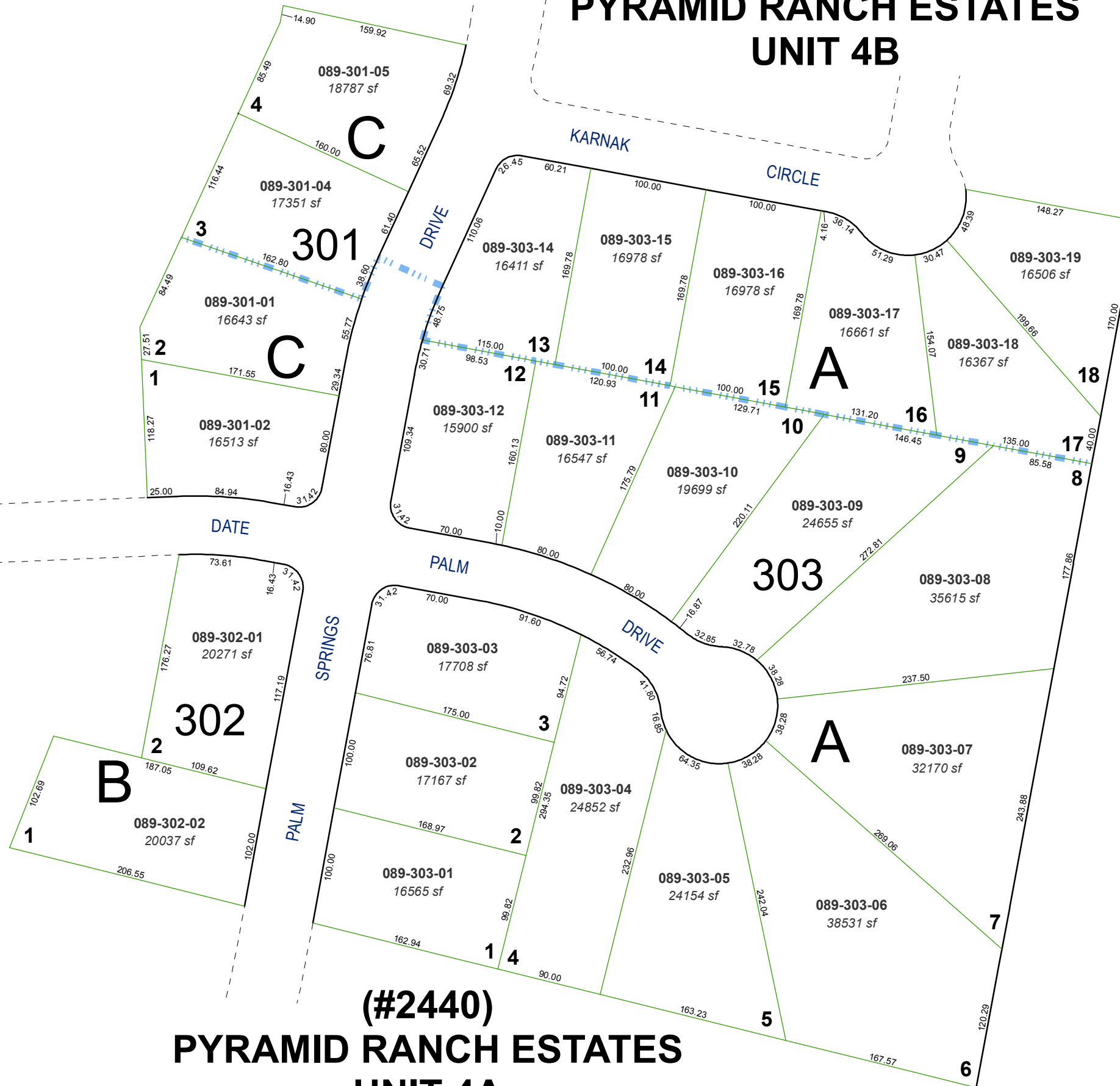


created by: TWT 12/6/2011

last updated:

area previously shown on map(s)

NOTE: This map was prepared for the use of the Washoe County Assessor for assessment and illustrative purposes only. It does not represent a survey of the premises. No liability is assumed as to the sufficiency or accuracy of the data delineated hereon.



# (#2440) PYRAMID RANCH ESTATES UNIT 4A