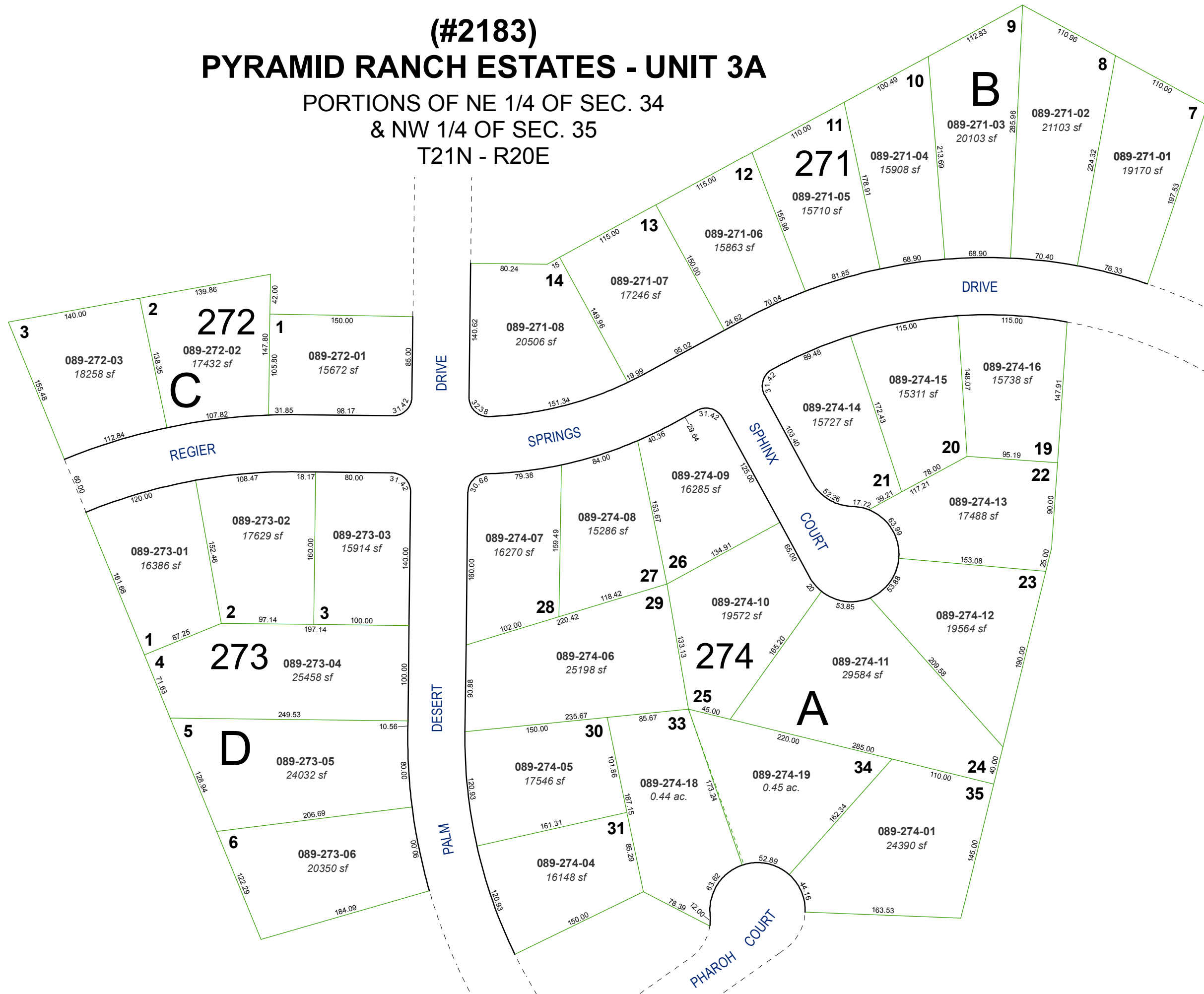


(#2183) PYRAMID RANCH ESTATES - UNIT 3A

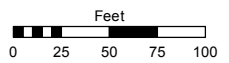
PORTIONS OF NE 1/4 OF SEC. 34
& NW 1/4 OF SEC. 35
T21N - R20E



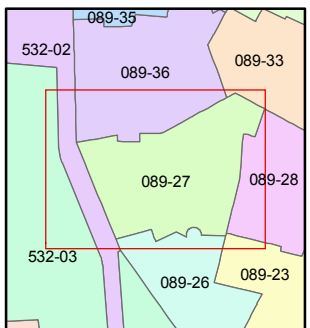
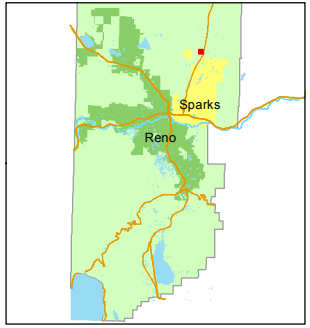
Assessor's Map Number
089-27

STATE OF NEVADA
WASHOE COUNTY
ASSESSOR'S OFFICE
Joshua G. Wilson, Assessor

1001 East Ninth Street
Building D
Reno, Nevada 89512
(775) 328-2231



1 inch = 100 feet



created by: TWT 12/28/2011

last updated: _____

area previously shown on map(s) _____

NOTE: This map was prepared for the use of the Washoe County Assessor for assessment and illustrative purposes only. It does not represent a survey of the premises. No liability is assumed as to the sufficiency or accuracy of the data delineated hereon.