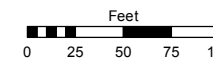


Assessor's Map Number

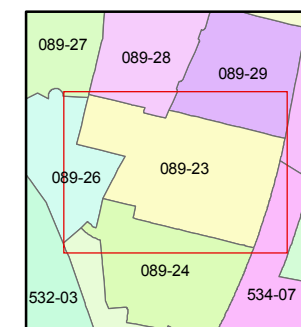
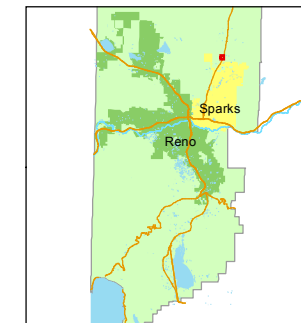
089-23

STATE OF NEVADA
WASHOE COUNTY
ASSESSOR'S OFFICE
Joshua G. Wilson, Assessor

1001 East Ninth Street
Building D
Reno, Nevada 89512
(775) 328-2231



1 inch = 100 feet



created by: TWT 12/30/2011

last updated:

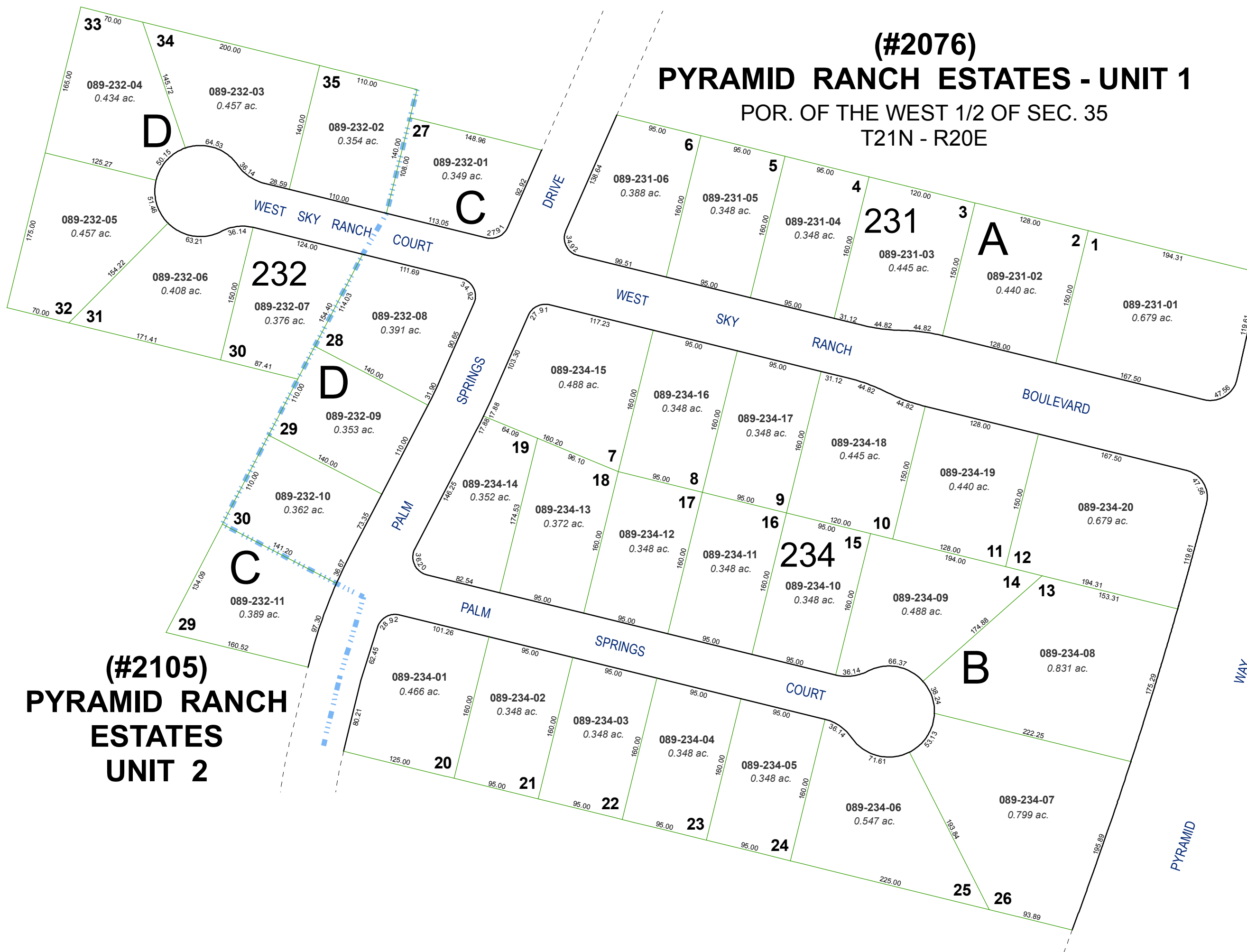
area previously shown on map(s)

NOTE: This map was prepared for the use of the Washoe County Assessor for assessment and illustrative purposes only. It does not represent a survey of the premises. No liability is assumed as to the sufficiency or accuracy of the data delineated hereon.

(#2076)

PYRAMID RANCH ESTATES - UNIT 1

POR. OF THE WEST 1/2 OF SEC. 35
T21N - R20E



(#2105) PYRAMID RANCH ESTATES UNIT 2