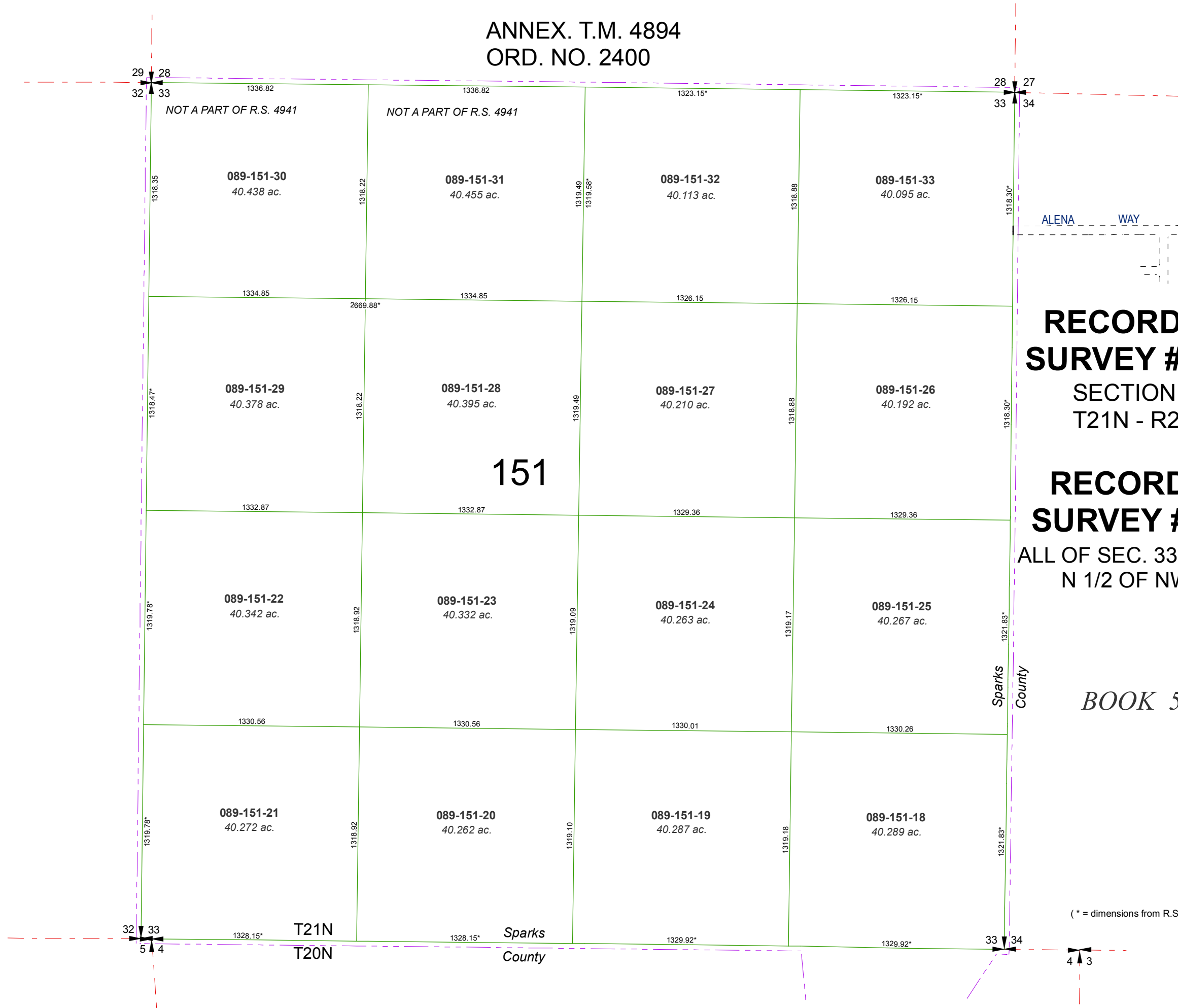


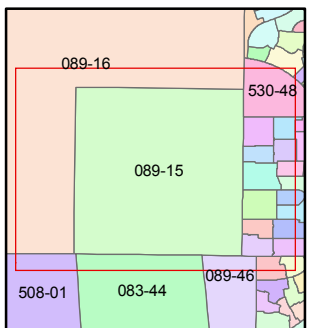
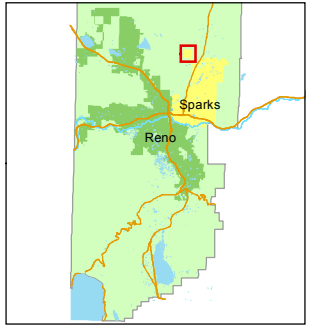
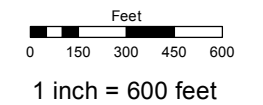
ANNEX. T.M. 4894
ORD. NO. 2400



Assessor's Map Number
089-15

STATE OF NEVADA
WASHOE COUNTY
ASSESSOR'S OFFICE
Joshua G. Wilson, Assessor

1001 East Ninth Street
Building D
Reno, Nevada 89512
(775) 328-2231



created by: TWT 11/29/2011

last updated: _____

area previously shown on map(s)
080-60

RECORD OF SURVEY #1226
SECTION 33
T21N - R20E

RECORD OF SURVEY #4941
ALL OF SEC. 33 EXCEPT
N 1/2 OF NW 1/4

BOOK 530

(* = dimensions from R.S. 4941)

NOTE: This map was prepared for the use of the Washoe County Assessor for assessment and illustrative purposes only. It does not represent a survey of the premises. No liability is assumed as to the sufficiency or accuracy of the data delineated hereon.