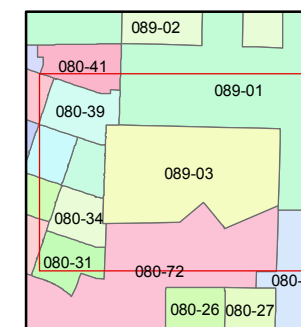
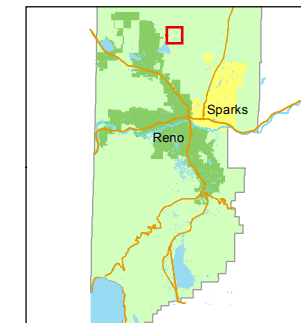


1 inch = 600 feet



created by: CFB 12/19/2011

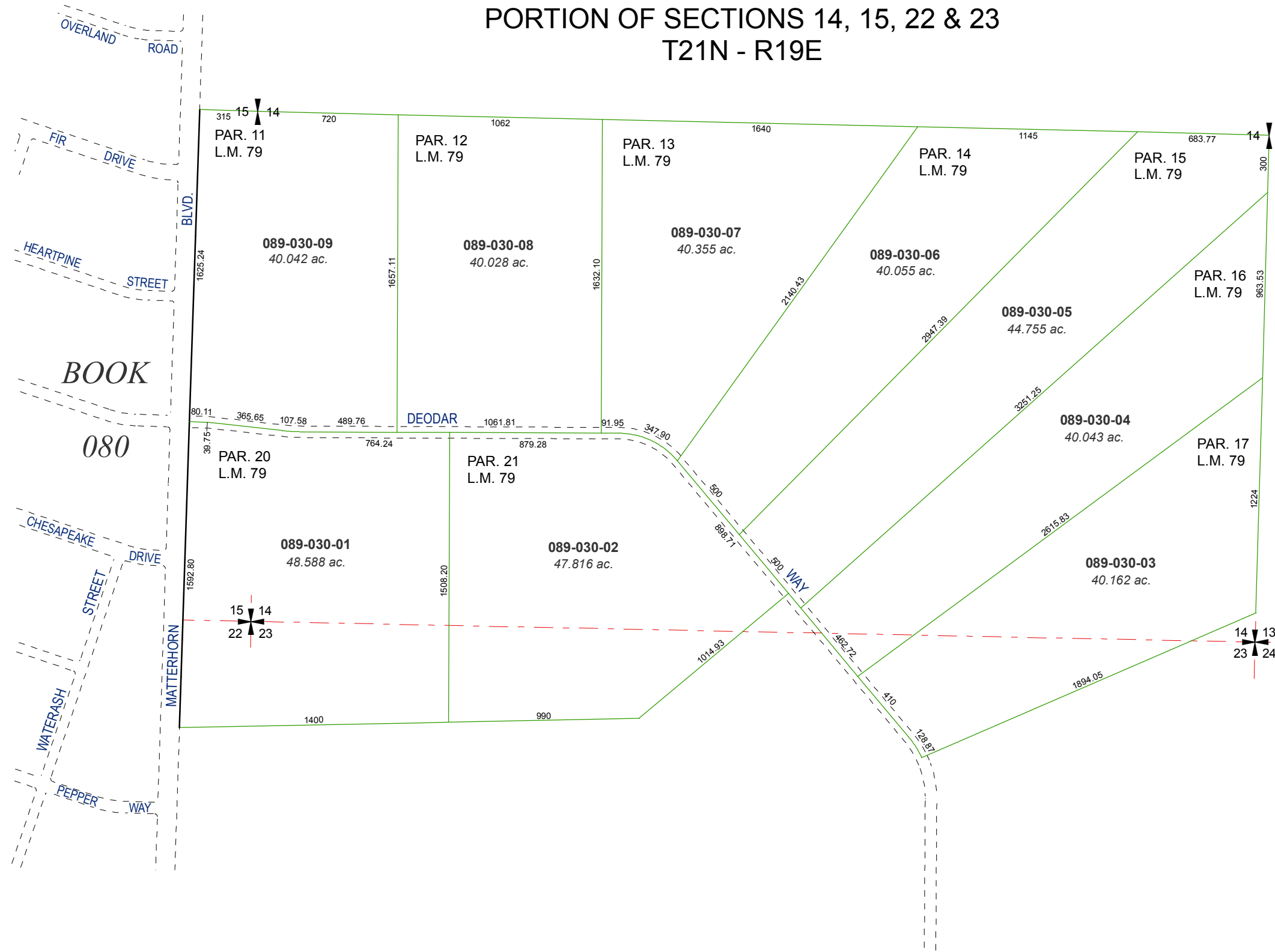
last updated: _____

area previously shown on map(s)

NOTE: This map was prepared for the use of the Washoe County Assessor for assessment and illustrative purposes only. It does not represent a survey of the premises. No liability is assumed as to the sufficiency or accuracy of the data delineated hereon.

DIVISION OF LAND MAP # 79

PORTION OF SECTIONS 14, 15, 22 & 23 T21N - R19E



BOOK
080